

Key Financial Activity

February '24 vs. '23

Corridor Performance

February '24 vs. '23

Railroad Self-Assessment Revenue

	'24	'23	Change
Feb Revenue	\$9.9 M	\$7.1 M	39.1 %
Calendar Year to Date (Jan-Feb) *	\$19.5 M	\$14.5 M	34.7 %
Fiscal Year to Date (July-Feb) *	\$72.3 M	\$65.2 M	10.9 %

* Note: Does not include reconciliations / adjustments for fiscal year-end.

Corridor Volumes

February '24 vs. '23

TEUs (Daily Containers)

Operations – On Corridor

	'24	'23	Change
TEU's *	411,806 (7,716)	308,232 (5,981)	33.6 %
Calendar Year to Date	814,446 (7,376)	622,671 (5,734)	30.8 %
Fiscal Year to Date	3,096,418 (6,895)	3,004,727 (6,719)	3.1 %

Operations – Around Corridor (Container Charges)

	'24	'23	Change
TEU's *	15,330 (287)	7,172 (139)	113.8 %
Calendar Year to Date	28,443 (258)	15,567 (143)	82.7 %
Fiscal Year to Date	98,613 (220)	95,263 (213)	3.5 %

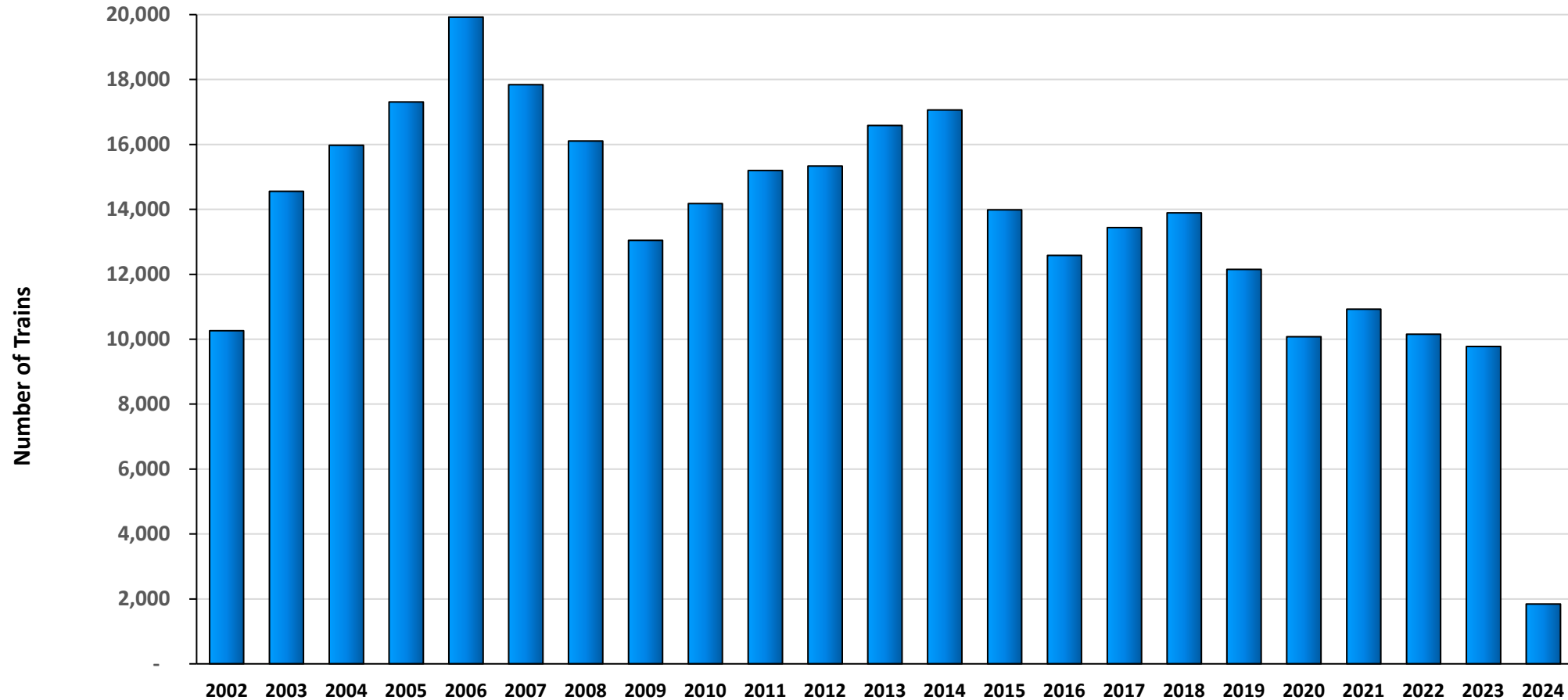
Operations – Combined

	'24	'23	Change
TEU's *	427,136 (8,003)	315,404 (6,121)	35.4 %
Calendar Year to Date	842,890 (7,633)	638,238 (5,878)	32.1 %
Fiscal Year to Date	3,195,031 (7,115)	3,099,990 (6,932)	3.1 %

Note: Numbers in () are the Average Daily Containers, Daily TEU's ÷ 1.84 = Containers

* Containers trucked to off-dock intermodal yards that are charged ACTA fee

Alameda Corridor Train Counts



Average Daily Trains*:

<u>2002</u>	<u>2003</u>	<u>2004</u>	<u>2005</u>	<u>2006</u>	<u>2007</u>	<u>2008</u>	<u>2009</u>	<u>2010</u>	<u>2011</u>	<u>2012</u>	<u>2013</u>
39	40	44	47	55	49	44	36	39	42	42	45
<u>2014</u>	<u>2015</u>	<u>2016</u>	<u>2017</u>	<u>2018</u>	<u>2019</u>	<u>2020</u>	<u>2021</u>	<u>2022</u>	<u>2023</u>	<u>2024</u>	
47	38	34	37	38	33	28	30	28	27	31	

Use Fees & Container Charges

as of February 29, 2024

