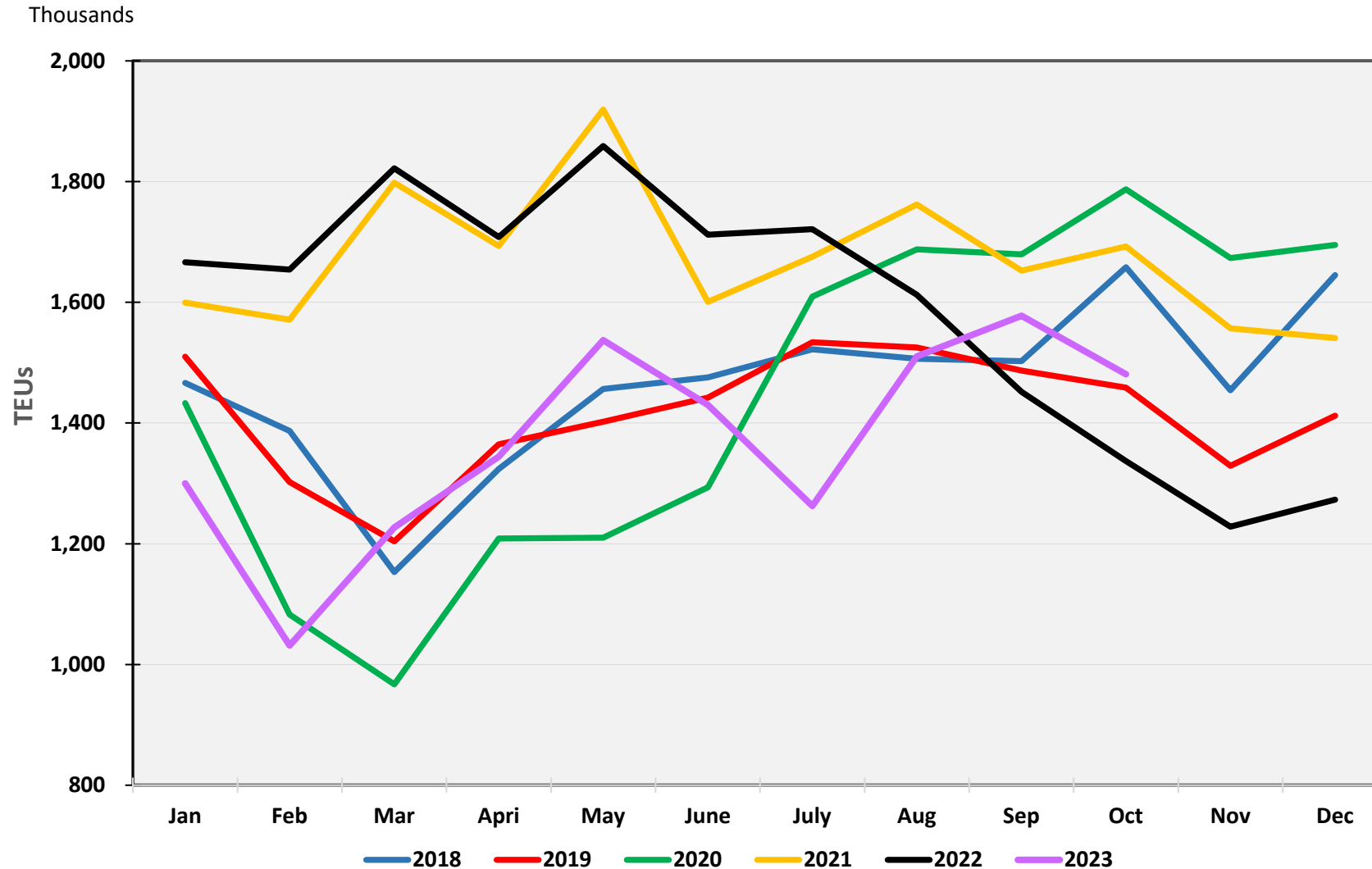


Performance Report October 2023

Port Container Throughput (TEUs) – October 2023

	POLA		POLB		Combined	
	Oct-23	% Change*	Oct-23	% Change*	Oct-23	% Change*
Imports	372,455	10.7%	363,300	23.6%	735,755	16.7%
Exports	121,276	35.2%	90,073	- 24.8%	211,349	0.9%
Total Loaded	493,731	15.9%	453,373	9.6%	947,104	12.8%
Empty	232,043	- 8.1%	301,777	23.3%	533,820	7.4%
Total	725,774	7.0%	755,150	14.7%	1,480,924	10.8%
	YTD	% Change*	YTD	% Change*	YTD	% Change*
Imports	3,692,050	- 14.5%	3,115,689	- 19.2%	6,807,739	- 16.7%
Exports	1,058,667	5.8%	1,069,952	- 8.9%	2,128,619	- 2.1%
Total Loaded	4,750,717	- 10.7%	4,185,641	- 16.8%	8,936,358	- 13.6%
Empty	2,373,183	- 26.4%	2,392,179	- 19.4%	4,765,362	- 23.1%
Total	7,123,900	- 16.6%	6,577,820	- 17.8%	13,701,720	- 17.2%

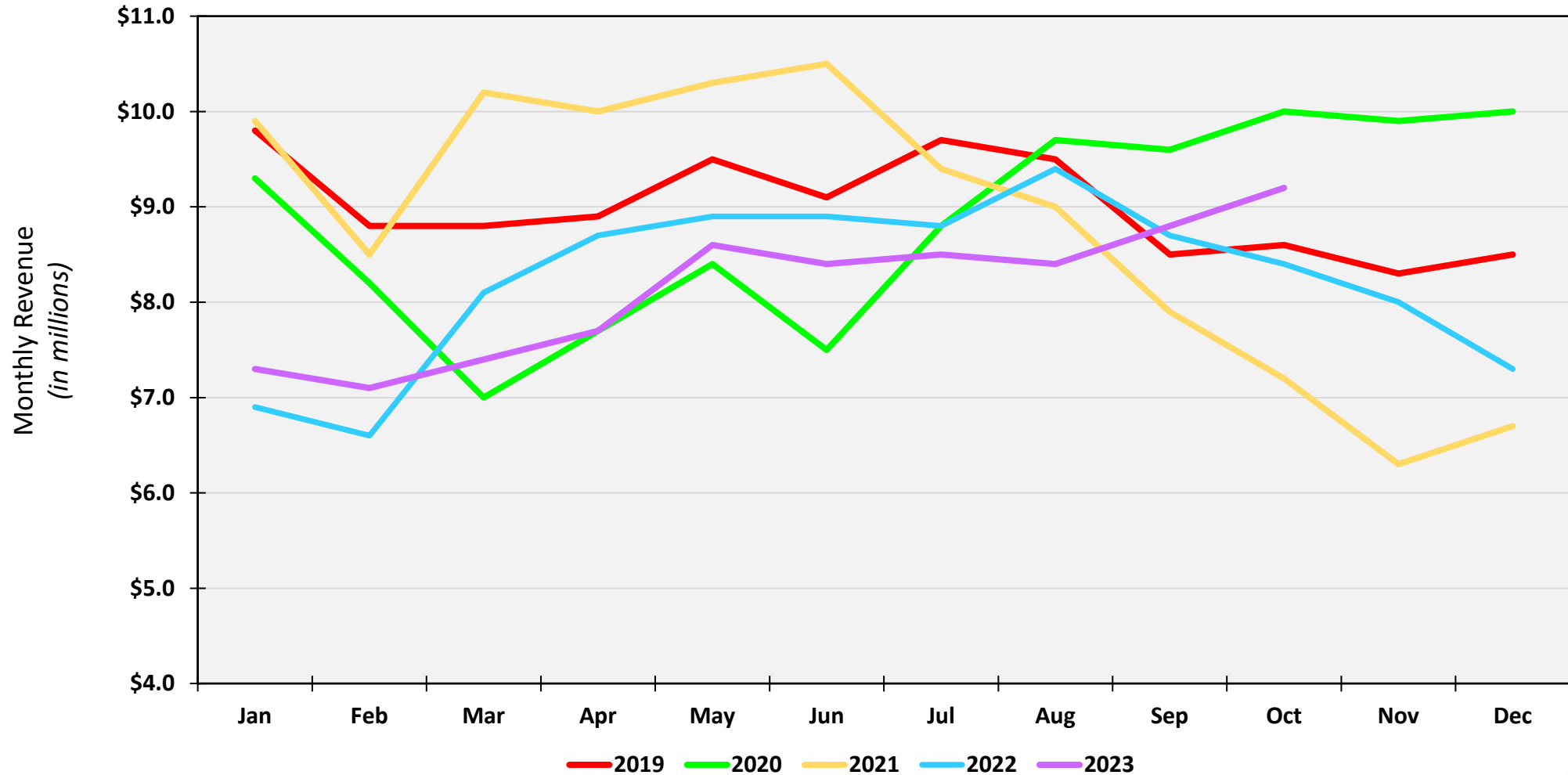
SP Bay Port TEUs Trends through October 2023



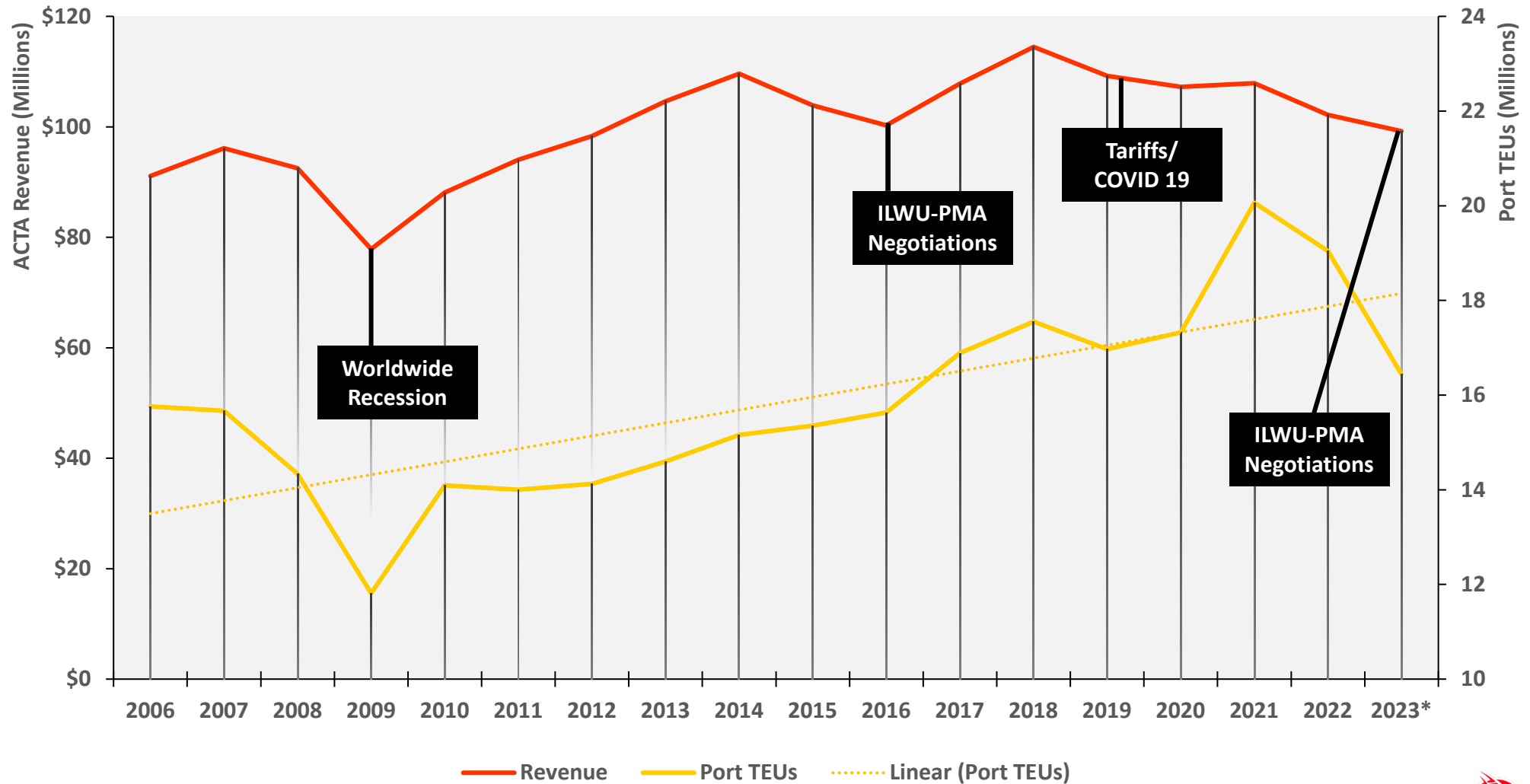
Alameda Corridor Performance October 2023

	Oct 2023	CY23	FY24
Revenue	\$9.2 M	\$81.5 M	\$34.8 M
Change from 2022	8.5 %	- 2.4 %	- 1.4 %
TEU's	414,413	3,615,460	1,561,708
Change from 2022	- 0.9 %	- 9.3 %	- 10.4 %

Corridor Revenue Performance CY2019 to CY2023



ACTA Revenue & Port TEUS



*Numbers updated thru October 2023, then averaged for year.