



ACTA

Alameda Corridor Transportation Authority

Governing Board

July 13, 2023

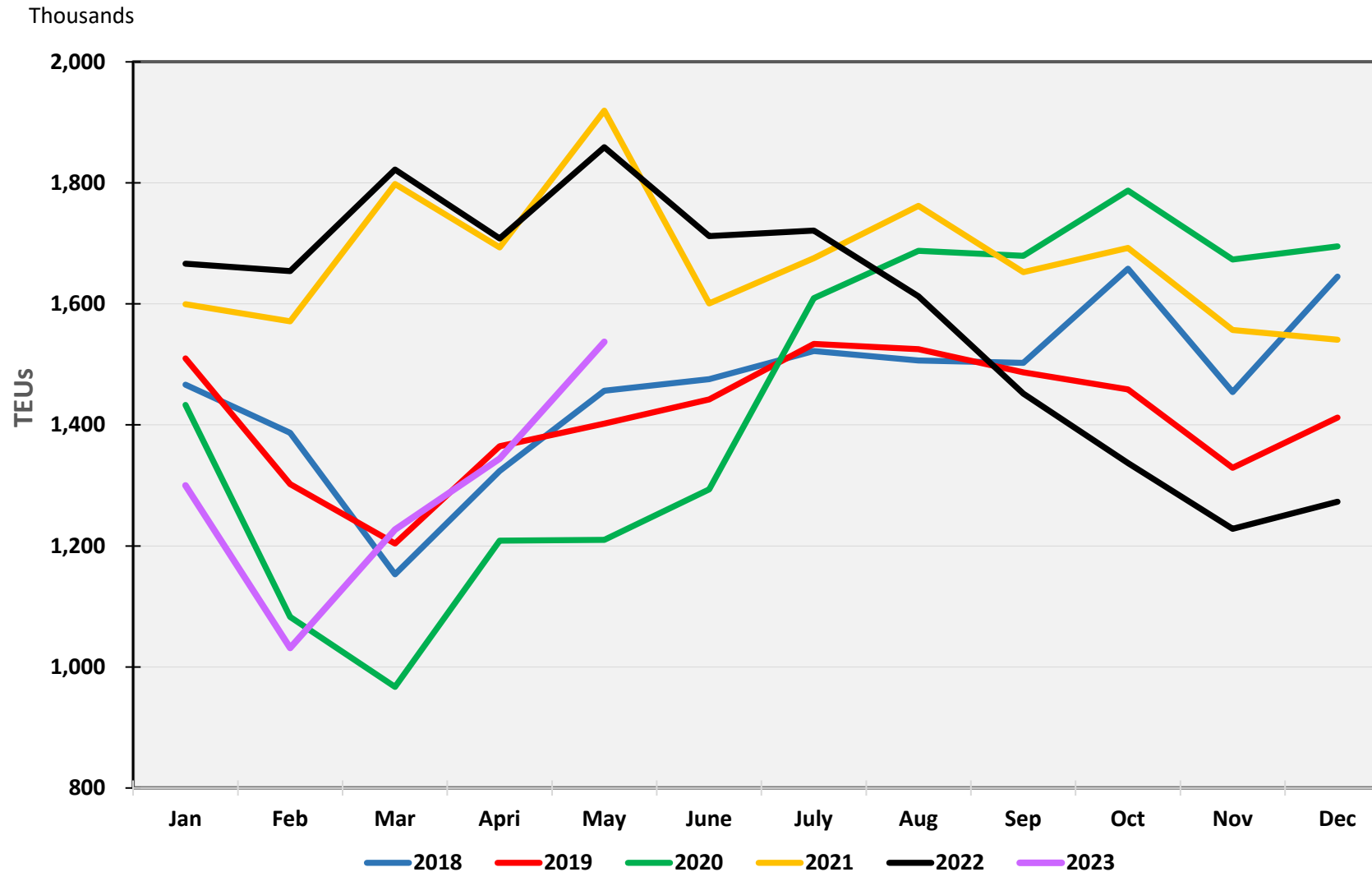
Item 1

Performance Report May 2023

Port Container Throughput (TEUs) – May 2023

	POLA		POLB		Combined	
	May-23	% Change*	May-23	% Change*	May-23	% Change*
Imports	409,150	- 18.2%	361,661	- 17.2%	770,811	- 17.7%
Exports	101,741	- 19.0%	127,870	8.1%	229,611	- 5.9%
Total Loaded	510,891	- 18.3%	489,531	- 11.8%	1,000,422	- 15.3%
Empty	268,249	- 21.6%	268,695	- 20.0%	536,944	- 20.8%
Total	779,140	- 19.5%	758,226	- 14.9%	1,537,366	- 17.3%
	YTD	% Change*	YTD	% Change*	YTD	% Change*
Imports	1,694,248	- 26.4%	1,472,617	- 28.0%	3,166,865	- 27.2%
Exports	473,346	- 11.2%	600,587	0.9%	1,073,933	- 4.8%
Total Loaded	2,167,594	- 23.6%	2,073,204	- 21.5%	4,240,798	- 22.6%
Empty	1,136,749	- 33.2%	1,062,400	- 30.7%	2,199,149	- 32.0%
Total	3,304,343	- 27.2%	3,135,604	- 24.8%	6,439,947	- 26.1%

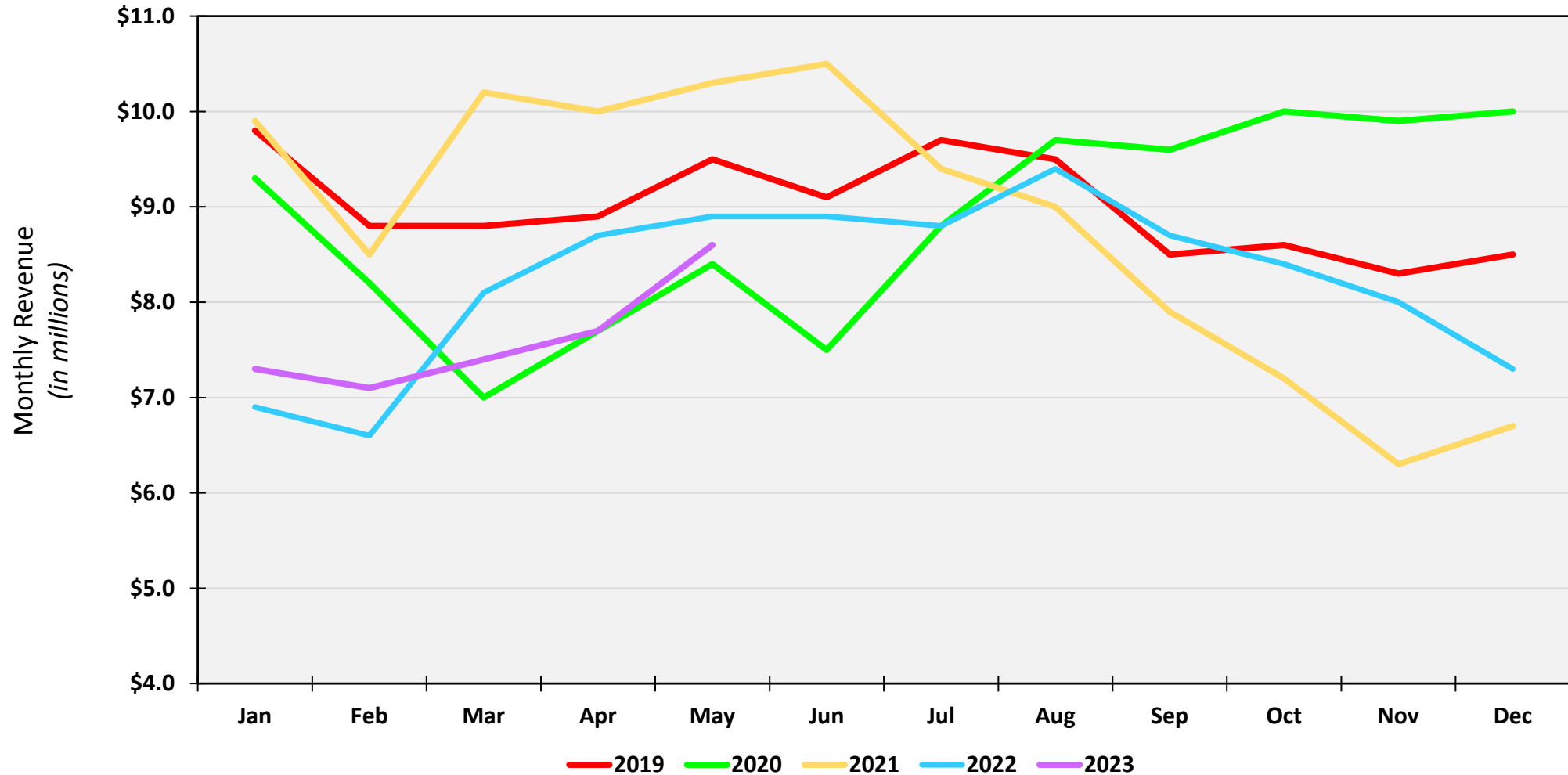
SP Bay Port TEUs Trends through May 2023



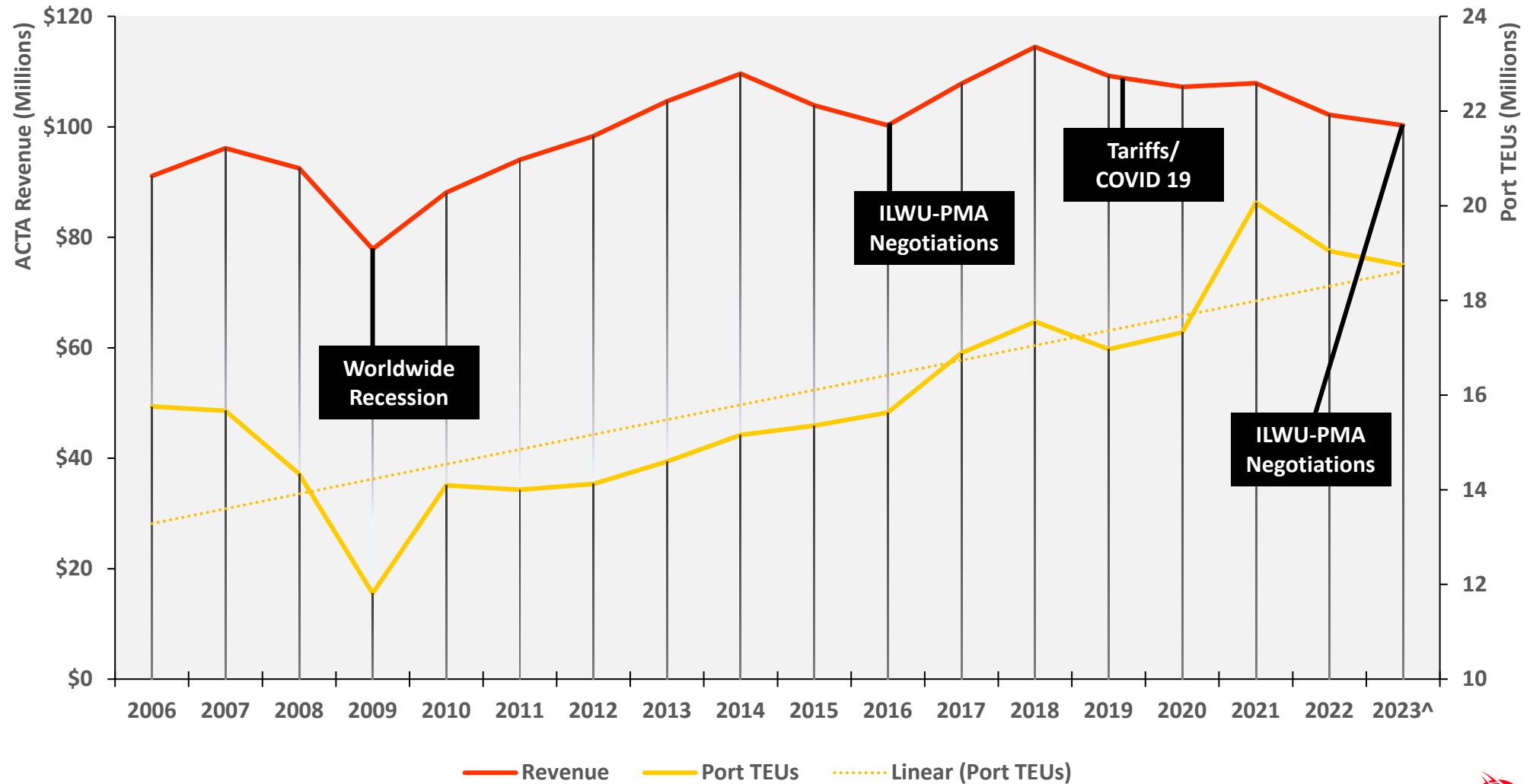
Alameda Corridor Performance May 2023

	May 2023	CY23	FY23
Revenue	\$8.6 M	\$38.2 M	\$88.9 M
Change from 2022	- 4.2 %	- 2.5 %	3.7 %
TEU's	377,080	1,674,647	4,136,398
Change from 2022	- 10.1 %	- 7.5 %	0.1 %

Corridor Revenue Performance CY2019 to CY2023



ACTA Revenue & Port TEUS



^ Projected Total

Container Cargo Mode Splits

(POLA/POLB Imports CY 2022)

Via Truck:

40.7%



Via Rail:

21%



On-Dock

3.3%



Off-Dock

35%



Transload
Facility



Transload
to Rail