

# *Item 1*

## **Performance Report March 2023**

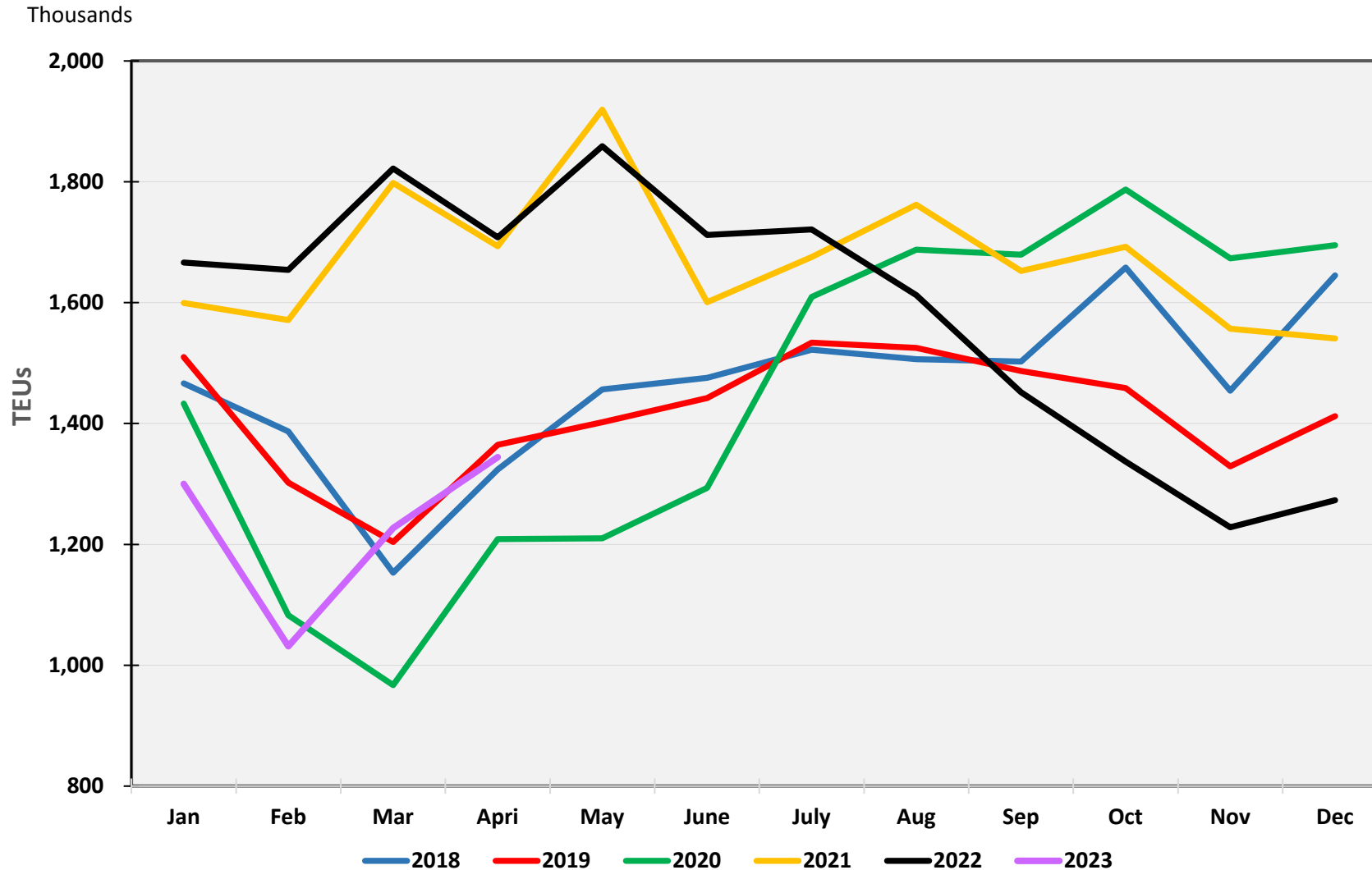
## Port Container Throughput (TEUs) – March 2023

	POLA		POLB		Combined	
	Mar-23	%Change*	Mar-23	%Change*	Mar-23	%Change*
<b>Imports</b>	319,962	- 35.4%	279,148	- 34.7%	599,110	- 35.1%
<b>Exports</b>	98,276	- 12.1%	133,512	16.9%	231,788	2.6%
<b>Total Loaded</b>	418,238	- 31.1%	412,660	- 23.8%	830,898	- 27.6%
<b>Empty</b>	204,996	- 41.7%	191,219	- 40.6%	396,215	- 41.2%
<b>Total</b>	623,234	- 35.0%	603,879	- 30.0%	1,227,113	- 32.6%
	<b>YTD</b>	<b>%Change*</b>	<b>YTD</b>	<b>%Change*</b>	<b>YTD</b>	<b>%Change*</b>
<b>Imports</b>	941,409	- 30.1%	797,512	- 33.9%	1,738,921	- 31.9%
<b>Exports</b>	283,404	- 7.8%	350,054	- 1.4%	633,458	- 4.4%
<b>Total Loaded</b>	1,224,813	- 25.9%	1,147,566	- 26.5%	2,372,379	- 26.2%
<b>Empty</b>	612,281	- 40.4%	573,762	- 36.1%	1,186,043	- 38.4%
<b>Total</b>	1,837,094	- 31.5%	1,721,328	- 30.0%	3,558,422	- 30.8%

## Port Container Throughput (TEUs) – April 2023

	POLA		POLB		Combined	
	Apr-23	%Change*	Apr-23	%Change*	Apr-23	%Change*
<b>Imports</b>	343,689	- 24.7%	313,444	- 21.8%	657,133	- 23.4%
<b>Exports</b>	88,202	- 11.7%	122,663	0.6%	210,865	- 4.9%
<b>Total Loaded</b>	431,891	- 22.4%	436,107	- 16.6%	867,998	- 19.6%
<b>Empty</b>	256,219	- 22.5%	219,943	- 26.2%	476,162	- 24.3%
<b>Total</b>	688,110	- 22.5%	656,050	- 20.1%	1,344,160	- 21.3%
	YTD	%Change*	YTD	%Change*	YTD	%Change*
<b>Imports</b>	1,285,098	- 28.7%	1,110,956	- 30.9%	2,396,054	- 29.8%
<b>Exports</b>	371,605	- 8.8%	472,717	- 0.9%	844,322	- 4.5%
<b>Total Loaded</b>	1,656,703	- 25.1%	1,583,673	- 24.0%	3,240,376	- 24.6%
<b>Empty</b>	868,500	- 36.1%	793,705	- 33.7%	1,662,205	- 35.0%
<b>Total</b>	2,525,203	- 29.3%	2,377,378	- 27.5%	4,902,581	- 28.4%

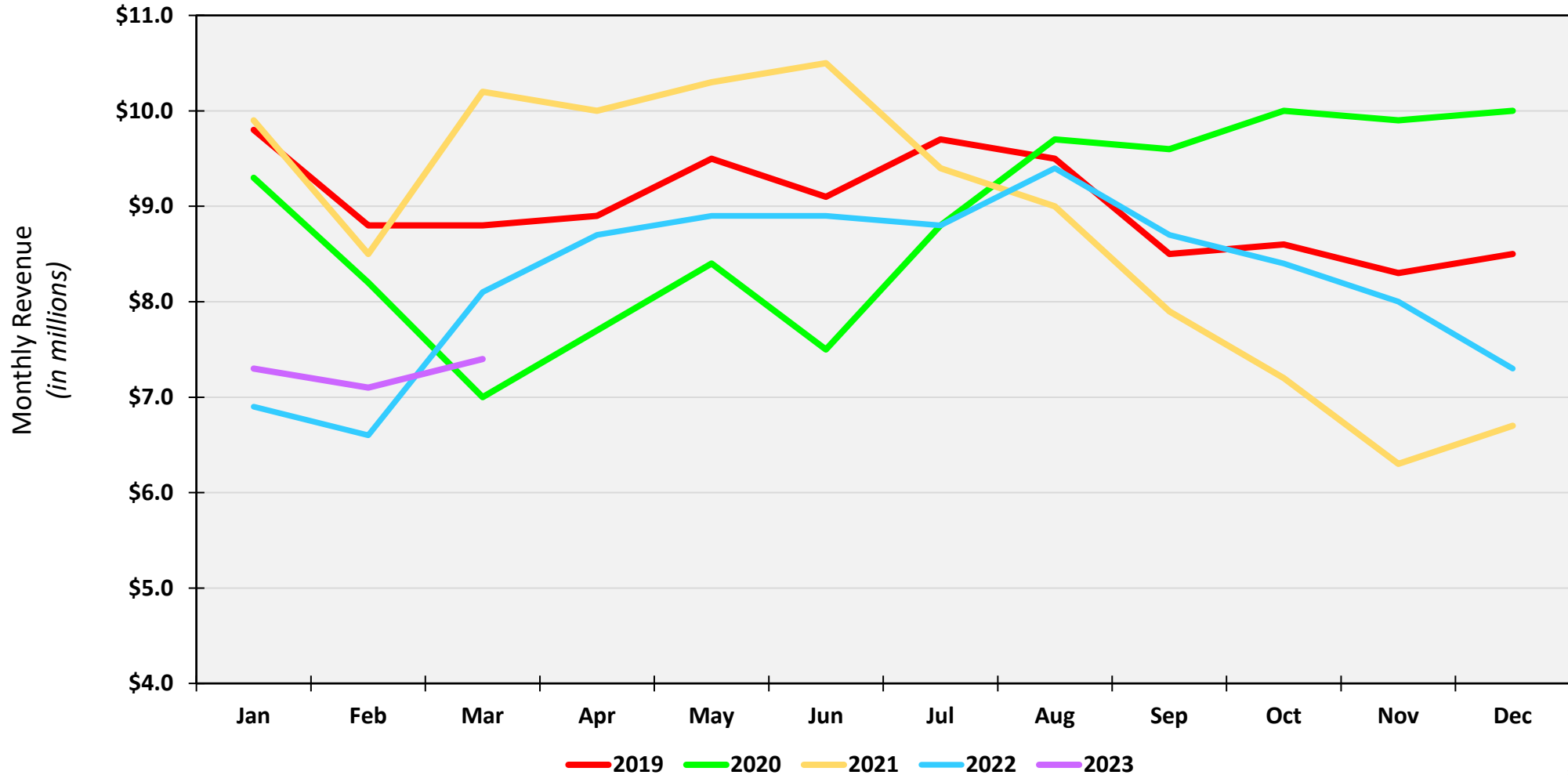
# SP Bay Port TEUs Trends through April 2023



## Alameda Corridor Performance March 2023

	Mar 2023	CY23	FY23
<b>Revenue</b>	\$7.4 M	\$21.9 M	\$72.6 M
Change from 2022	- 8.4 %	1.5 %	6.5 %
<b>TEU's</b>	318,925	957,164	3,418,915
Change from 2022	- 14.3 %	- 3.2 %	3.3 %

# Corridor Revenue Performance CY2019 to CY2023



# ACTA Revenue & Port TEUS

