

Key Financial Activity

January '23 vs. '22

Corridor Performance

January '23 vs. '22

Railroad Self-Assessment Revenue

| | '23 | '22 | Change |
|-----------------------------------|----------|----------|--------|
| January Revenue | \$7.3 M | \$6.9 M | 6,8 % |
| Calendar Year to Date (Jan-Jan) * | \$7.3 M | \$6.9 M | 6,8 % |
| Fiscal Year to Date (July-Jan) * | \$58.0 M | \$53.4 M | 8.6 % |

* Note: Does not include reconciliations / adjustments for fiscal year-end.

Corridor Volumes

January '23 vs. '22

TEUs (Daily Containers)

Operations – On Corridor

| | '23 | '22 | Change |
|-----------------------|-------------------|-------------------|--------|
| TEU's * | 314,439 (5,511) | 307,070 (5,382) | 2.4 % |
| Calendar Year to Date | 314,439 (5,511) | 307,070 (5,382) | 2.4 % |
| Fiscal Year to Date | 2,696,495 (6,815) | 2,540,517 (6,421) | 6.1% |

Operations – Around Corridor (Container Charges)

| | '23 | '22 | Change |
|-----------------------|--------------|--------------|---------|
| TEU's * | 8,395 (147) | 8,986 (158) | - 6.6 % |
| Calendar Year to Date | 8,395 (147) | 8,986 (158) | - 6.6 % |
| Fiscal Year to Date | 88,091 (223) | 97,354 (246) | - 9.5 % |

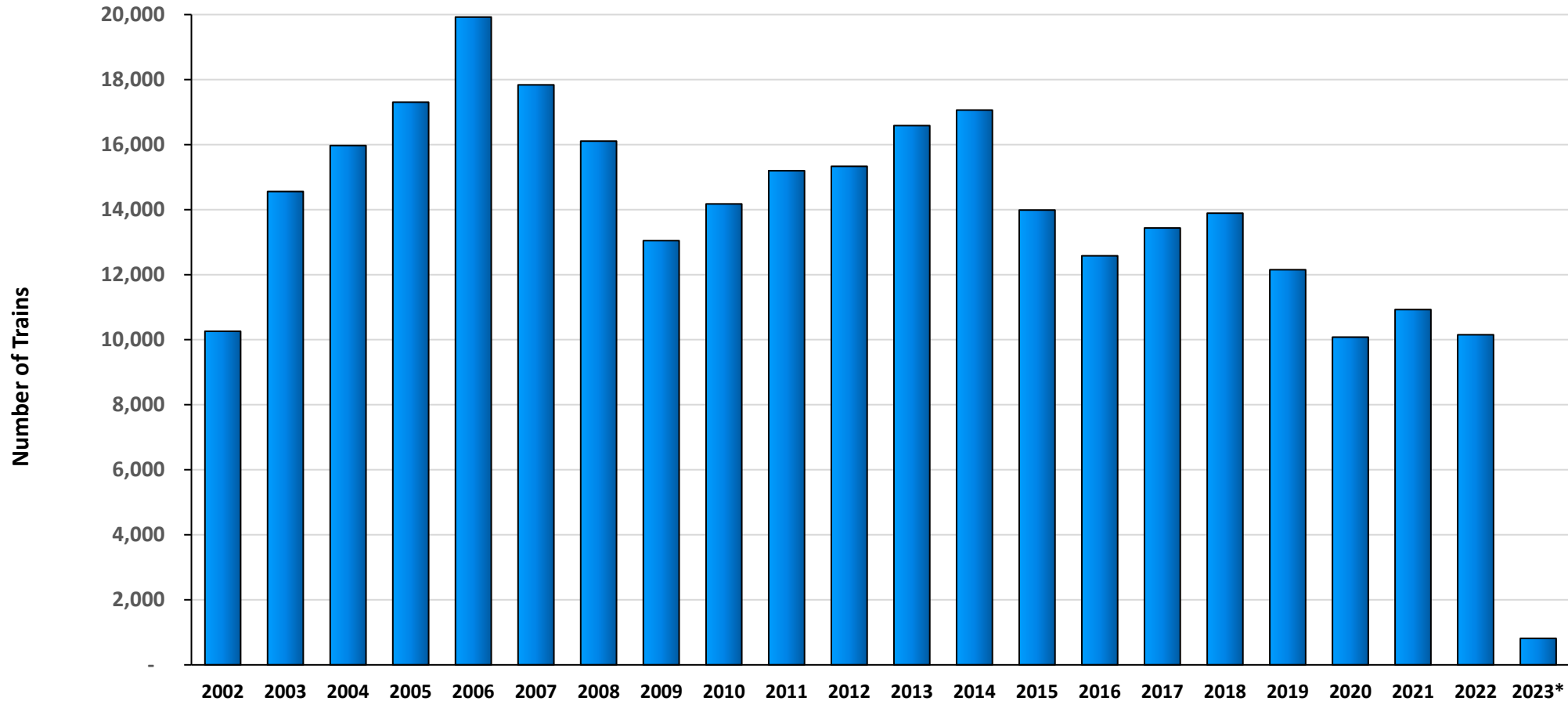
Operations – Combined

| | '23 | '22 | Change |
|-----------------------|-------------------|-------------------|--------|
| TEU's * | 322,834 (5,659) | 316,056 (5,540) | 2.2 % |
| Calendar Year to Date | 322,834 (5,659) | 316,056 (5,540) | 2.2 % |
| Fiscal Year to Date | 2,784,586 (7,037) | 2,637,871 (6,667) | 5.6 % |

Note: Numbers in () are the Average Daily Containers, Daily TEU's ÷ 1.84 = Containers

* Containers trucked to off-dock intermodal yards that are charged ACTA fee

Alameda Corridor Train Counts



Average Daily Trains**:

| <u>2002</u> | <u>2003</u> | <u>2004</u> | <u>2005</u> | <u>2006</u> | <u>2007</u> | <u>2008</u> | <u>2009</u> | <u>2010</u> | <u>2011</u> | <u>2012</u> |
|-------------|-------------|-------------|-------------|-------------|-------------|-------------|-------------|-------------|-------------|-------------|
| 39 | 40 | 44 | 47 | 55 | 49 | 44 | 36 | 39 | 42 | 42 |
| <u>2013</u> | <u>2014</u> | <u>2015</u> | <u>2016</u> | <u>2017</u> | <u>2018</u> | <u>2019</u> | <u>2020</u> | <u>2021</u> | <u>2022</u> | <u>2023</u> |
| 45 | 47 | 38 | 34 | 37 | 38 | 33 | 28 | 30 | 28 | 26 |

• Calendar Year-to-Date

** Corridor Capacity 150 Trains per Day

Use Fees & Container Charges

as of January 31, 2023

