

# *Item 1*

## **Performance Report December 2022**

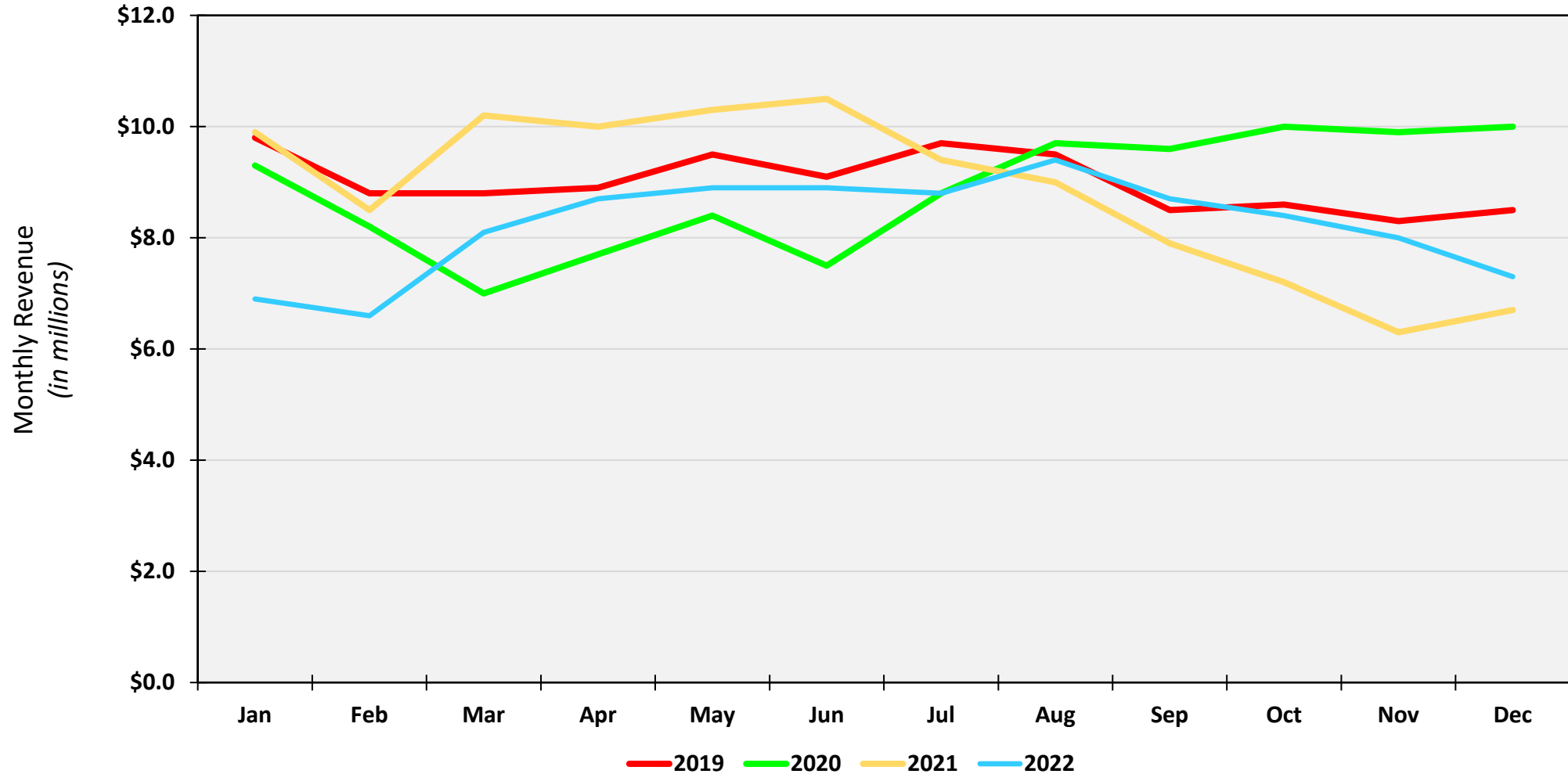
## Port Container Throughput (TEUs) – December 2022

	POLA		POLB		Combined	
	Dec-22	%Change*	Dec-22	%Change*	Dec-22	%Change*
<b>Imports</b>	352,046	- 8.6%	241,643	- 32.6%	593,689	- 20.2%
<b>Exports</b>	96,518	36.2%	115,782	1.6%	212,300	14.9%
<b>Total Loaded</b>	448,564	- 1.7%	357,425	- 24.4%	805,989	- 13.2%
<b>Empty</b>	280,307	- 15.2%	186,680	- 33.7%	466,987	- 23.7%
<b>Total</b>	728,871	- 7.3%	544,105	- 27.9%	1,272,976	- 17.4%
	YTD	%Change*	YTD	%Change*	YTD	%Change*
<b>Imports</b>	4,975,735	- 9.8%	4,358,790	- 4.9%	9,334,525	- 7.5%
<b>Exports</b>	1,187,085	0.2%	1,414,883	- 1.6%	2,601,968	- 0.8%
<b>Total Loaded</b>	6,162,820	- 8.0%	5,773,673	- 4.1%	11,936,493	- 6.1%
<b>Empty</b>	3,748,339	- 5.8%	3,359,986	- 0.1%	7,108,325	- 3.2%
<b>Total</b>	9,911,159	- 7.2%	9,133,659	- 2.7%	19,044,818	- 5.1%

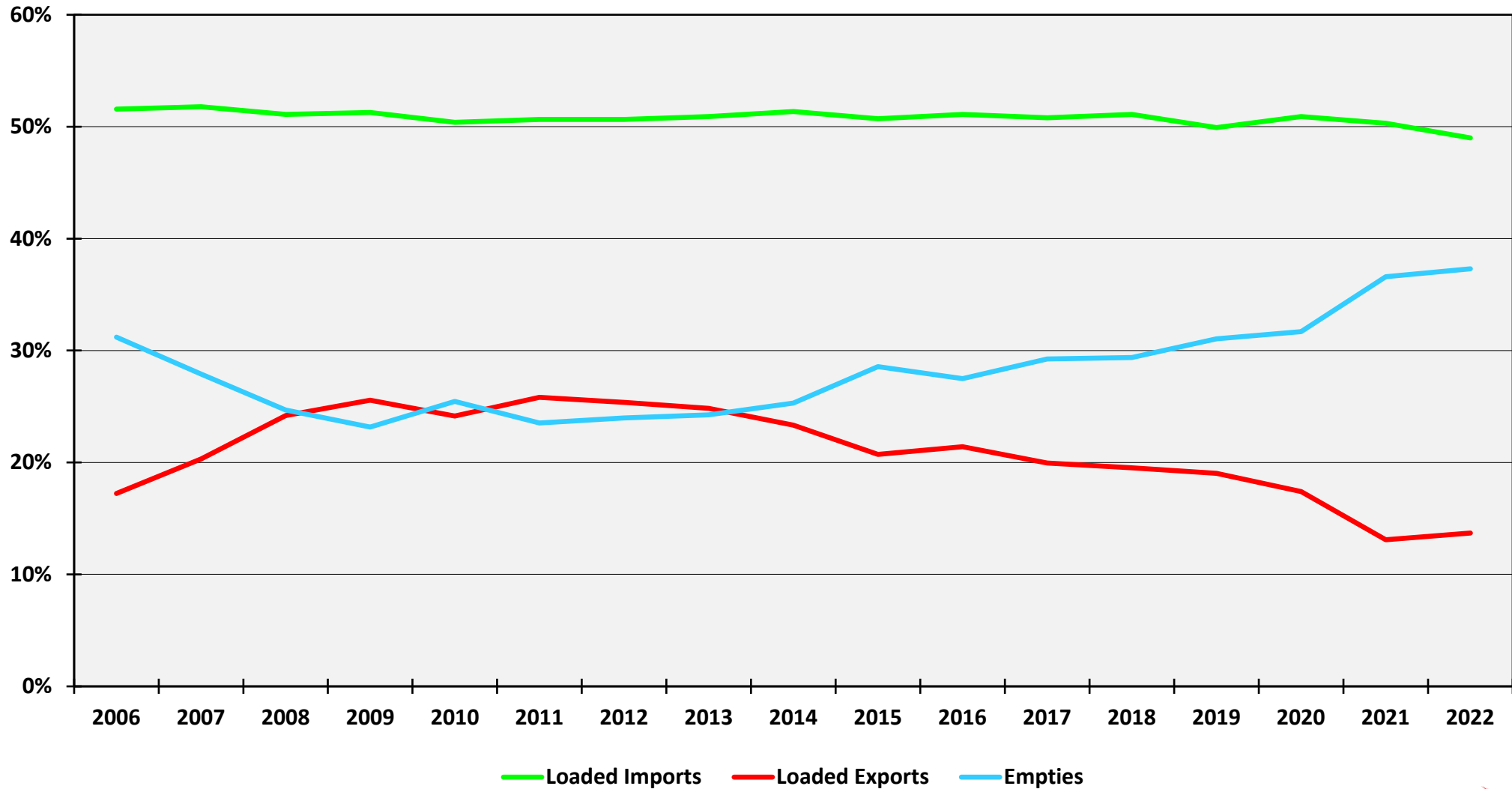
## Alameda Corridor Performance December 2022

	Dec 2022	CY22	FY23
<b>Revenue</b>	\$7.3 M	\$98.8 M	\$50.7 M
Change from 2021	9.7 %	- 6.8 %	8.9 %
<b>TEU's</b>	337,579	4,704,491	2,461,751
Change from 2021	4.5 %	- 8.5 %	6.0 %

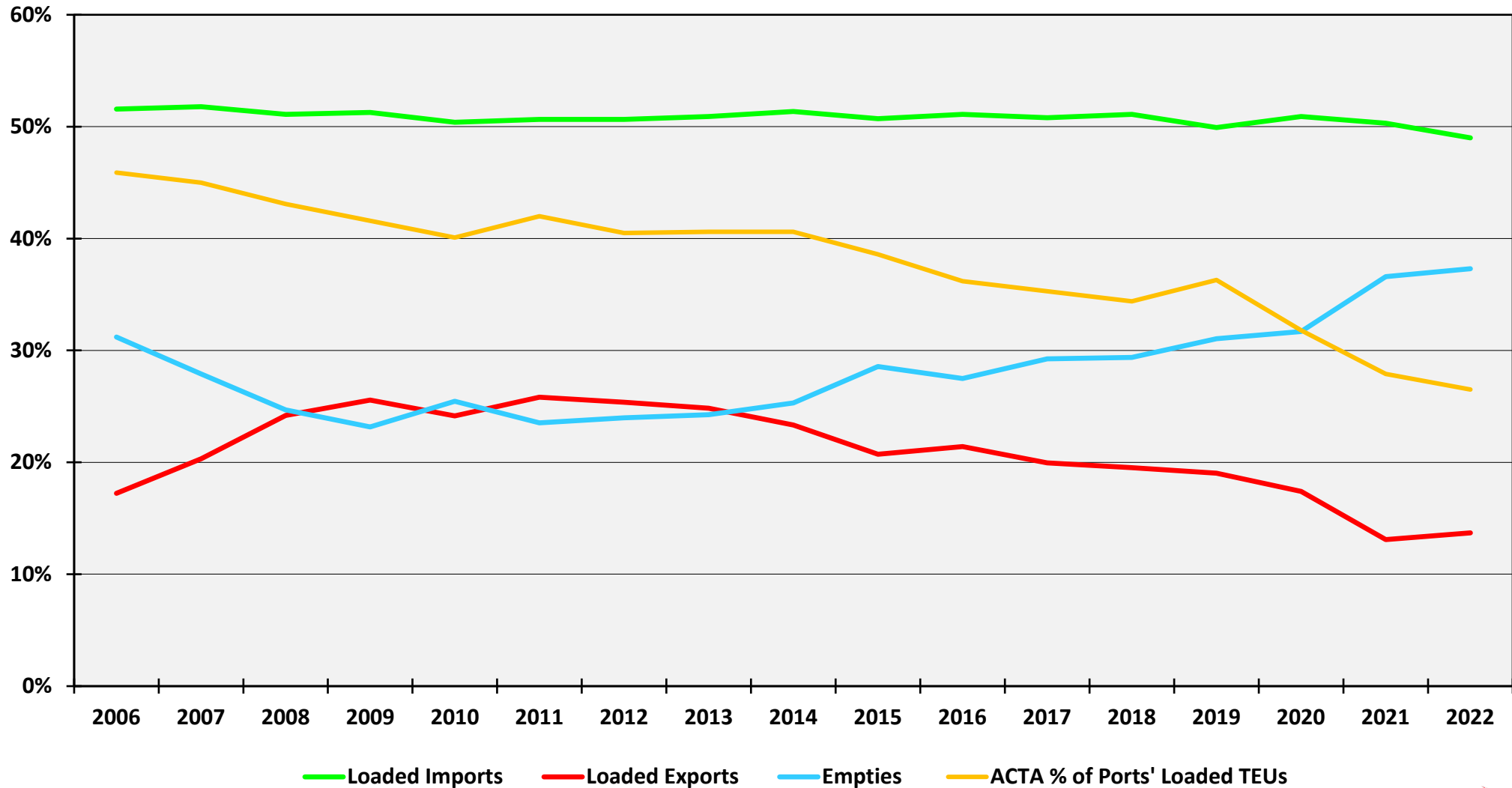
# Corridor Revenue Performance CY2019, CY2020, CY2021 & CY2022



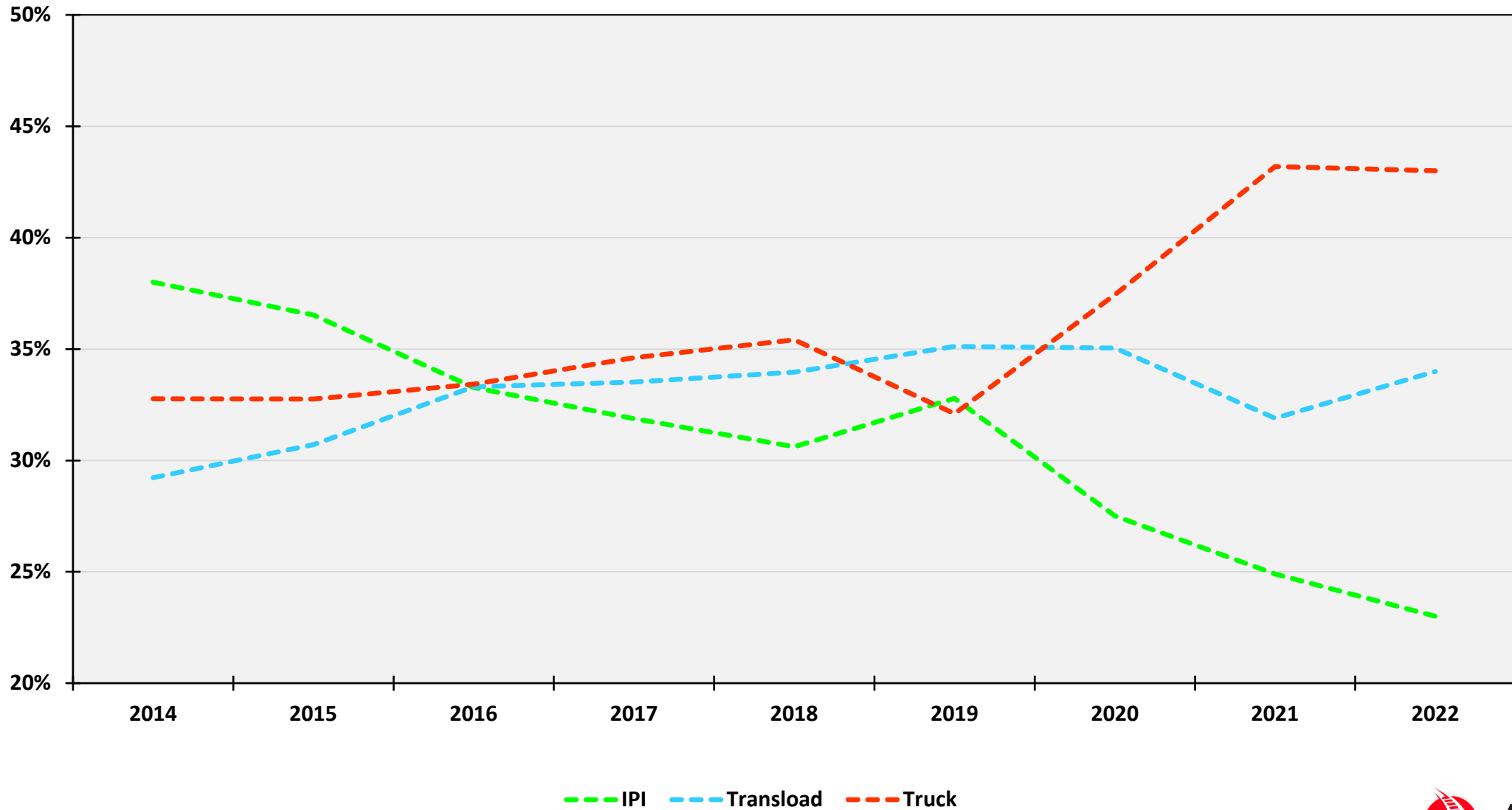
# Port Cargo Components



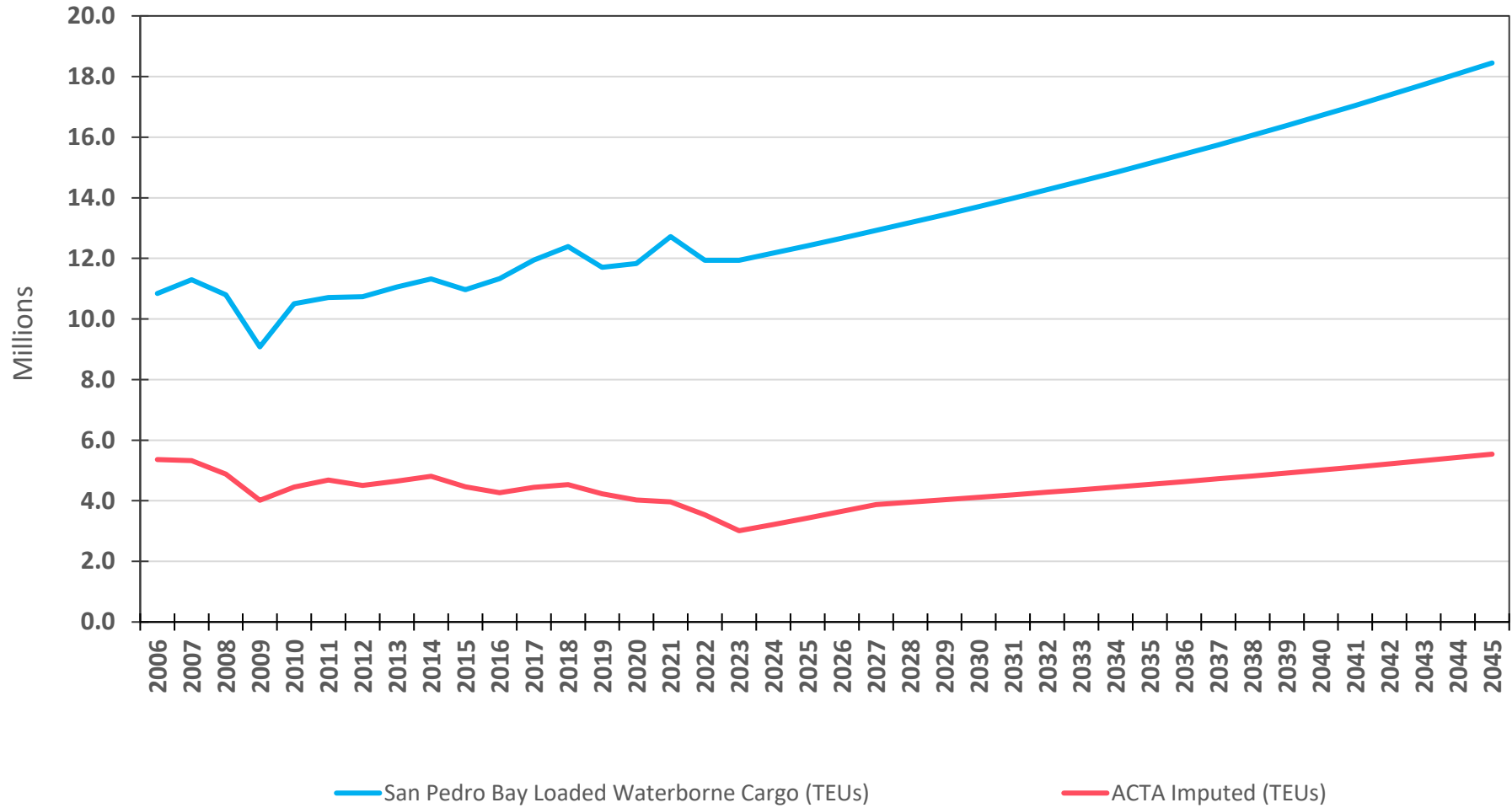
# Port Cargo Components



# Mode Split Ports Loaded Import Cargo



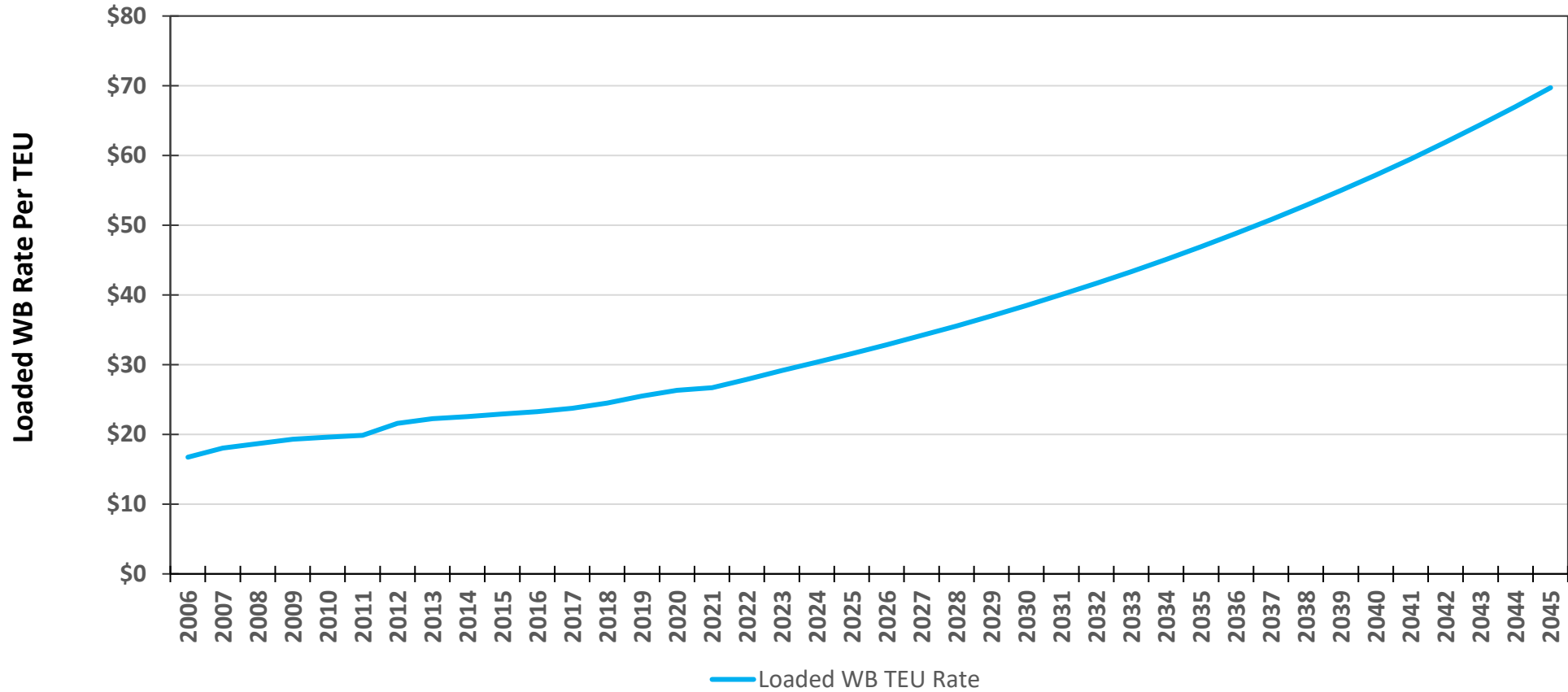
# Port & ACTA Cargo Volumes CY2006 to CY2045



Note: CY 2023 through 2045 numbers estimated form Revenue Forecast Model

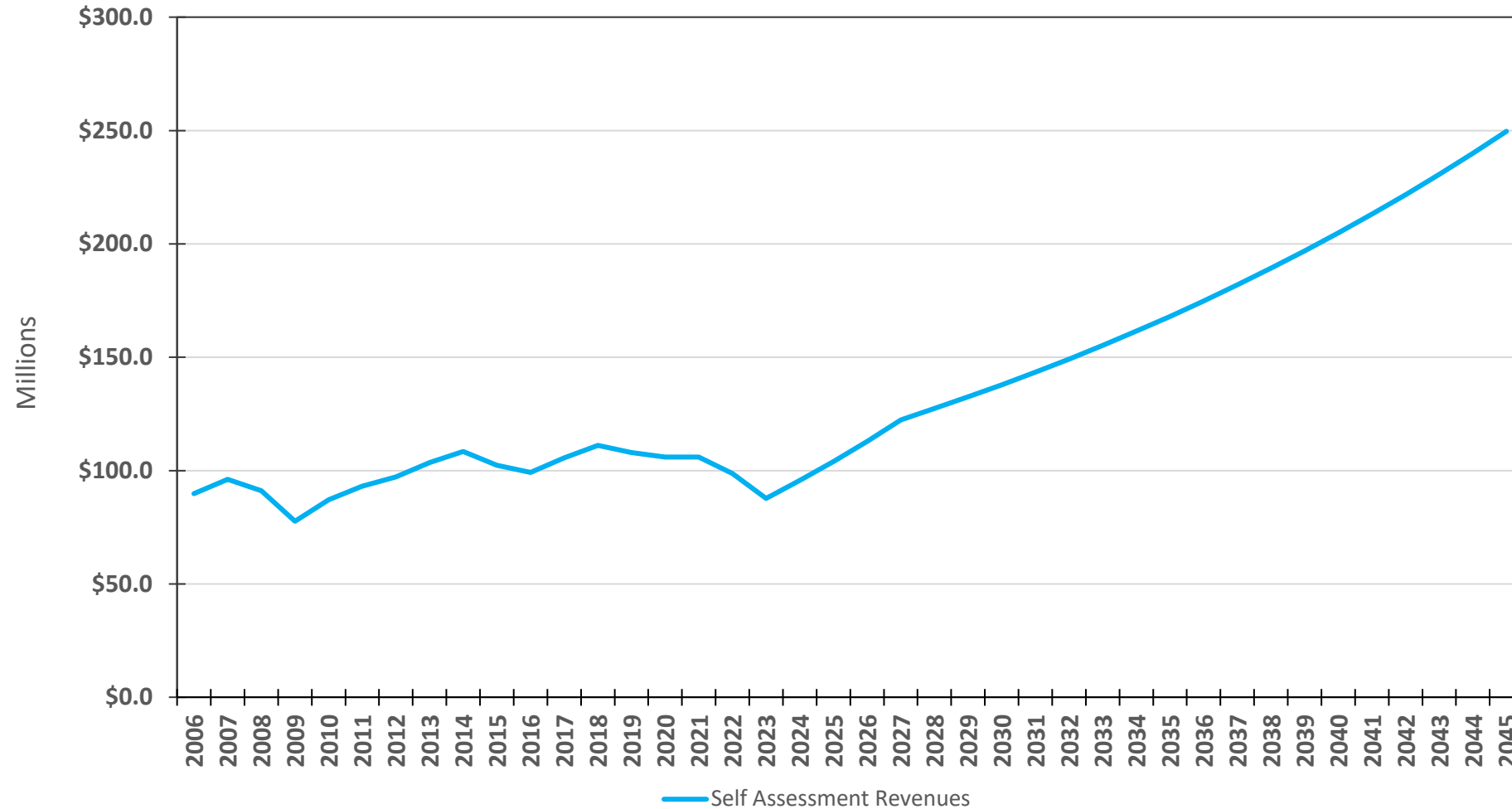


# ACTA Fee - Loaded Waterborne CY2006 to CY2045



Note: CY 2023 through 2045 numbers estimated from Revenue Forecast Model at a 2% increase

# ACTA Revenue CY2006 to CY2045



Note: CY 2023 through 2045 numbers estimated form Revenue Forecast Model