

Key Financial Activity

November '22 vs. '21

Corridor Performance

November '22 vs. '21

Railroad Self-Assessment Revenue

	'22	'21	Change
November Revenue	\$8.0 M	\$6.3 M	27.7 %
Calendar Year to Date (Jan-Nov) *	\$91.4 M	\$99.3 M	- 7.9 %
Fiscal Year to Date (July-Nov) *	\$43.3 M	\$39.9 M	8.7 %

* Note: Does not include reconciliations / adjustments for fiscal year-end.

Corridor Volumes

November '22 vs. '21

TEUs (Daily Containers)

Operations – On Corridor

	'22	'21	Change
TEU's *	370,339 (6,708)	299,352 (5,422)	23.7 %
Calendar Year to Date	4,217,178 (6,861)	4,593,058 (7,472)	- 8.2 %
Fiscal Year to Date	2,052,541 (7,289)	1,919,464 (6,817)	6.9 %

Operations – Around Corridor (Container Charges)

	'22	'21	Change
TEU's *	10,043 (182)	8,833 (160)	13.7 %
Calendar Year to Date	149,734 (244)	222,327 (362)	- 32.7 %
Fiscal Year to Date	71,631 (254)	79,178 (281)	- 9.5 %

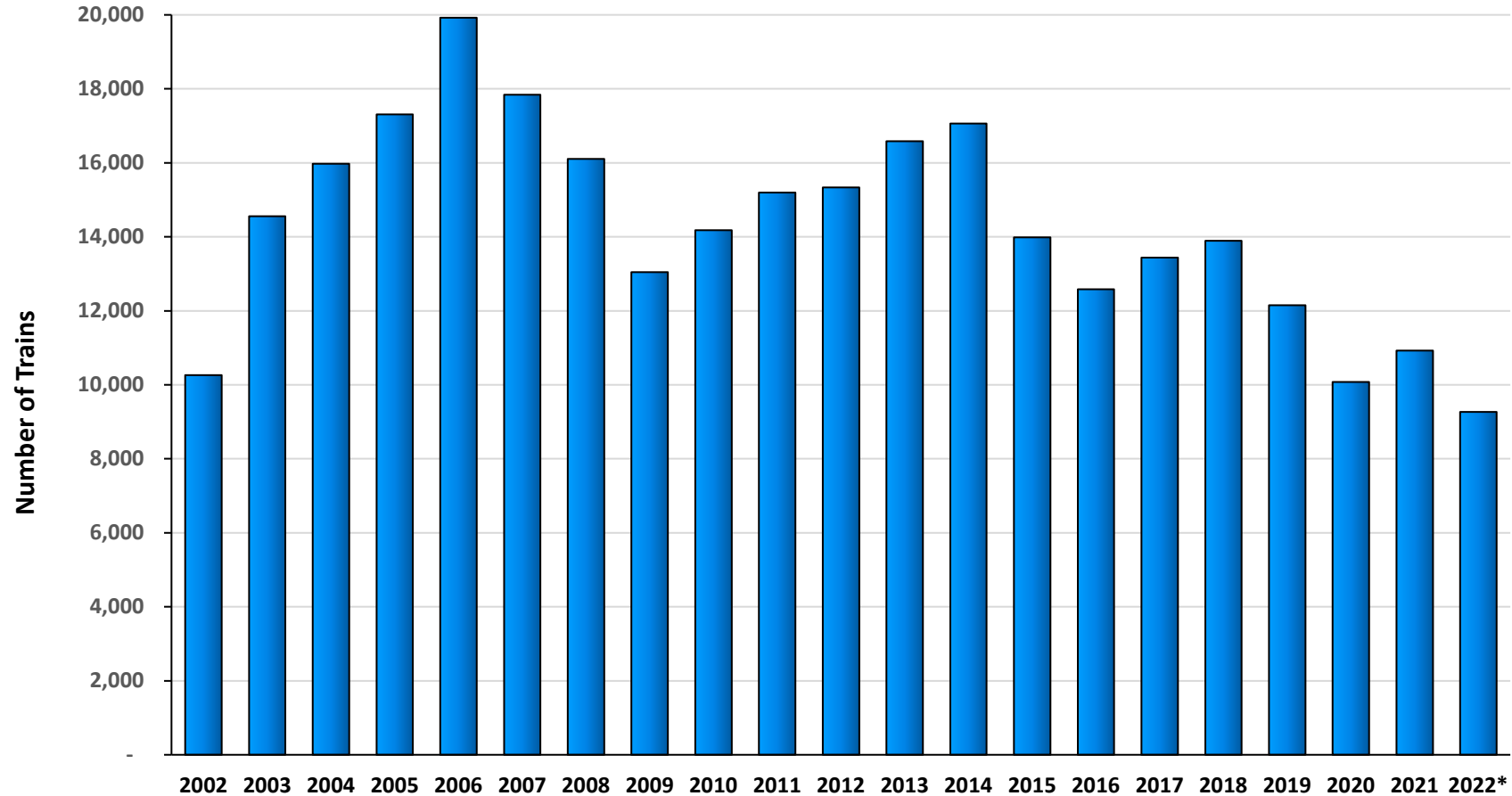
Operations – Combined

	'22	'21	Change
TEU's *	380,383 (6,889)	308,184 (5,582)	23.4 %
Calendar Year to Date	4,366,912 (7,104)	4,815,384 (7,834)	- 9.3 %
Fiscal Year to Date	2,124,172 (7,544)	1,998,642 (7,098)	6.3 %

Note: Numbers in () are the Average Daily Containers, Daily TEU's ÷ 1.82 = Containers

* Containers trucked to off-dock intermodal yards that are charged ACTA fee

Alameda Corridor Train Counts



Average Daily Trains**:

<u>2002</u>	<u>2003</u>	<u>2004</u>	<u>2005</u>	<u>2006</u>	<u>2007</u>	<u>2008</u>	<u>2009</u>	<u>2010</u>	<u>2011</u>	<u>2012</u>
39	40	44	47	55	49	44	36	39	42	42
<u>2013</u>	<u>2014</u>	<u>2015</u>	<u>2016</u>	<u>2017</u>	<u>2018</u>	<u>2019</u>	<u>2020</u>	<u>2021</u>	<u>2022</u>	
45	47	38	34	37	38	33	28	30	28	

- Calendar Year-to-Date
- ** Corridor Capacity 150 Trains per Day

Use Fees & Container Charges

as of November 30, 2022

