

Item 1

Performance Report November 2022

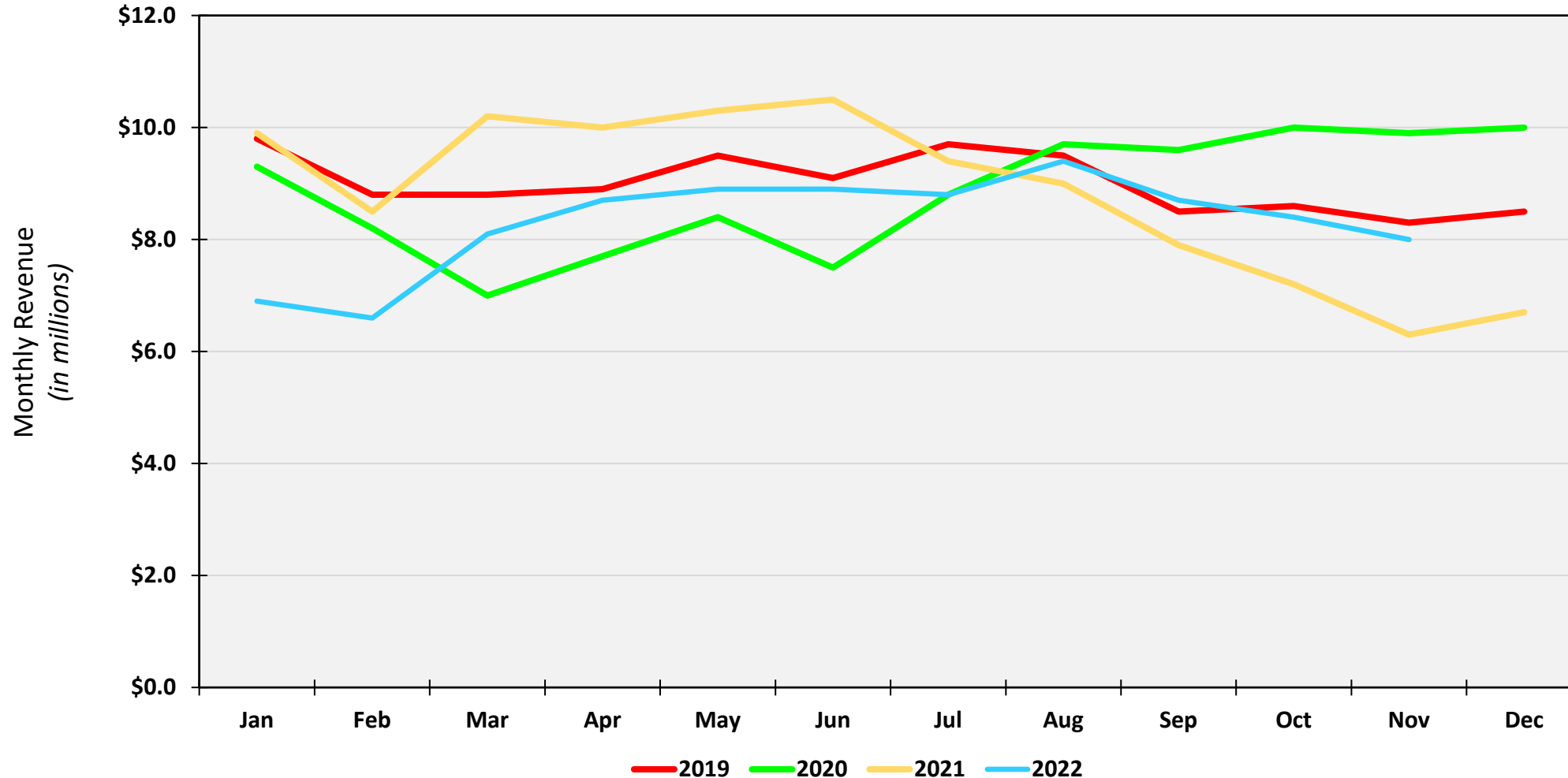
Port Container Throughput (TEUs) – November 2022

	POLA		POLB		Combined	
	Nov-22	%Change*	Nov-22	%Change*	Nov-22	%Change*
Imports	307,080	- 23.9%	259,442	- 28.4%	566,522	- 26.0%
Exports	90,116	8.9%	124,988	13.8%	215,104	11.7%
Total Loaded	397,196	- 18.3%	384,430	- 18.6%	781,626	- 18.4%
Empty	242,148	- 25.6%	204,313	- 25.2%	446,461	- 25.4%
Total	639,344	- 21.2%	588,743	- 21.0%	1,228,087	- 21.1%
	YTD	%Change*	YTD	%Change*	YTD	%Change*
Imports	4,623,689	- 9.8%	4,117,147	- 2.5%	8,740,836	- 6.5%
Exports	1,090,567	- 2.0%	1,299,101	- 1.9%	2,389,668	- 2.0%
Total Loaded	5,714,255	- 8.4%	5,416,248	- 2.4%	11,130,503	- 5.6%
Empty	3,468,032	- 5.0%	3,173,306	2.9%	6,641,338	- 1.4%
Total	9,182,287	- 7.2%	8,589,554	- 0.5%	17,771,841	- 4.0%

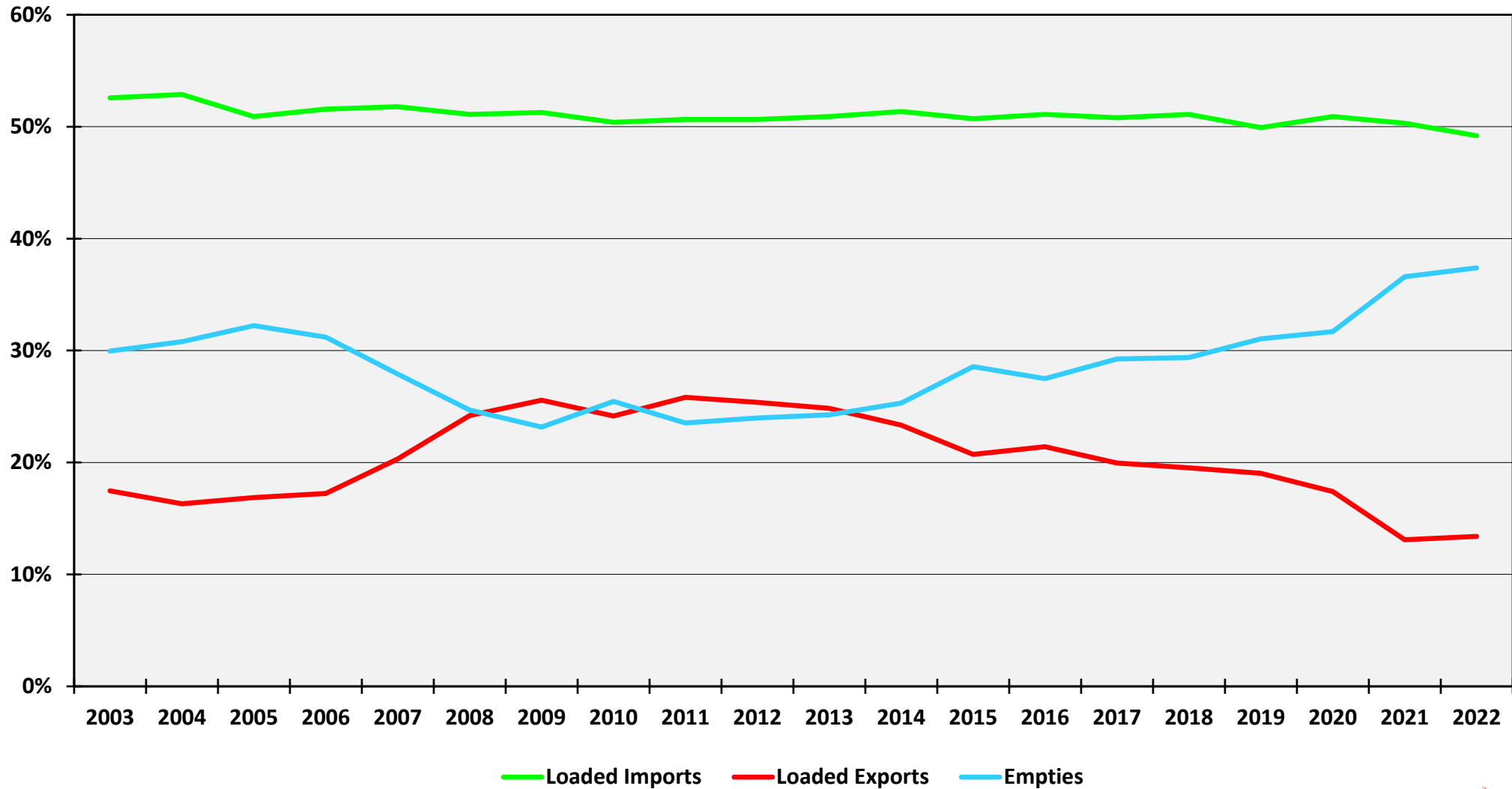
Alameda Corridor Performance November 2022

	Nov 2022	CY22	FY23
Revenue	\$8.0 M	\$91.4 M	\$43.4 M
Change from 2021	27.7 %	- 7.9 %	8.7 %
TEU's	380,383	4,366,912	2,124,172
Change from 2021	23.4 %	- 9.3 %	6.3 %

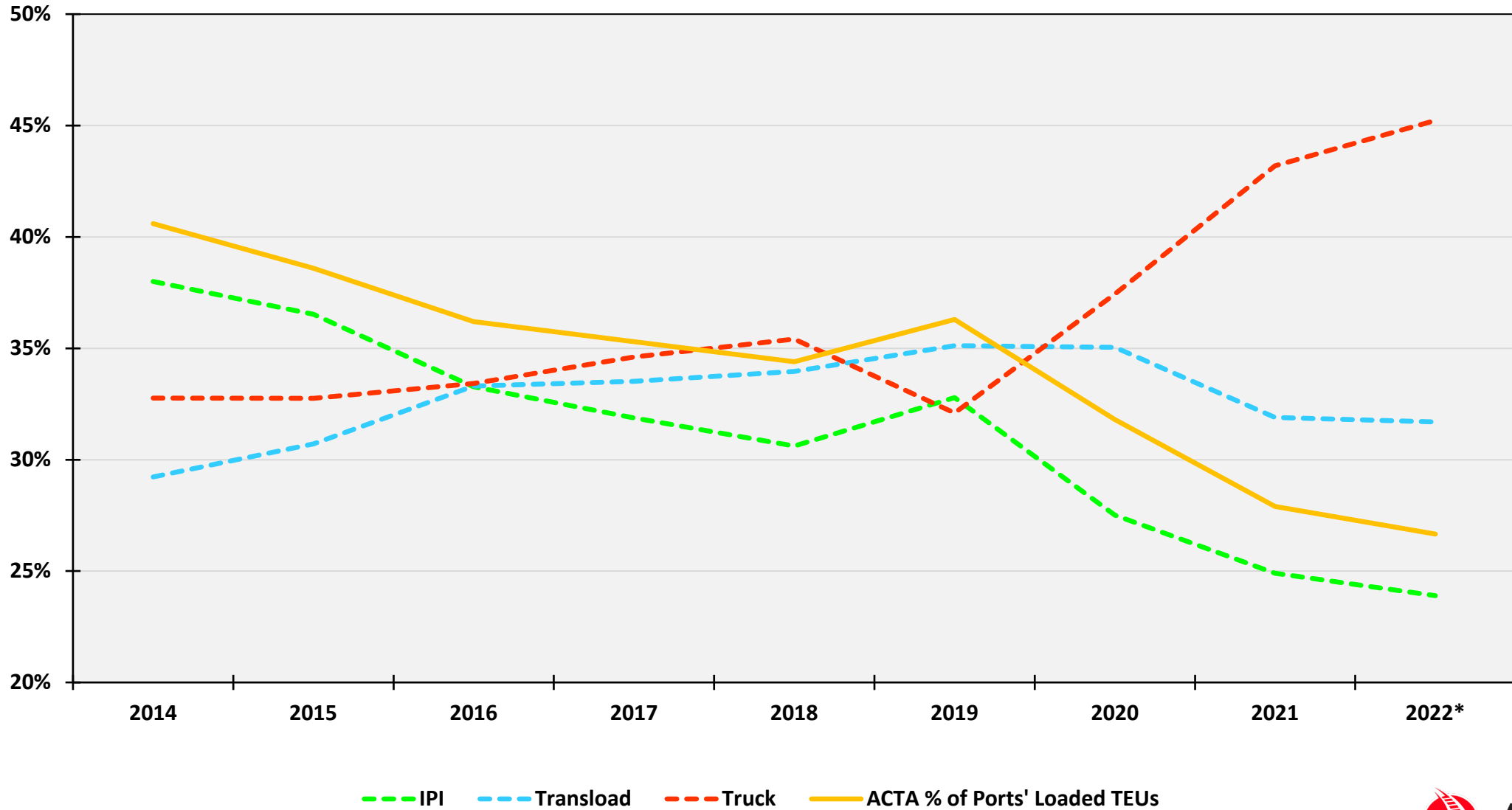
Corridor Revenue Performance CY2019, CY2020, CY2021 & YTD 2022



Port Cargo Components



Port Cargo Mode Split



* 2022 values are calculated using actual values through Sep 2022; Oct, Nov & Dec are forecast

Ocean Carrier Influence

Eastbound IPI moves show ocean carrier grip on market

IPI revenue moves per working day US Southwest and Midwest

