

Key Financial Activity

October '22 vs. '21

Corridor Performance

October '22 vs. '21

Railroad Self-Assessment Revenue

	'22	'21	Change
October Revenue	\$8.4 M	\$7.2 M	17.1 %
Calendar Year to Date (Jan-Oct) *	\$83.4 M	\$93.0 M	- 10.3 %
Fiscal Year to Date (July-Oct) *	\$35.3 M	\$33.6 M	5.2 %

* Note: Does not include reconciliations / adjustments for fiscal year-end.

Corridor Volumes

October '22 vs. '21

TEUs (Daily Containers)

Operations – On Corridor

	'22	'21	Change
TEU's *	405,483 (7,107)	351,326 (6,158)	15.4 %
Calendar Year to Date	3,846,839 (6,876)	4,293,706 (7,674)	- 10.4 %
Fiscal Year to Date	1,682,202 (7,431)	1,620,112 (7,157)	3.8 %

Operations – Around Corridor (Container Charges)

	'22	'21	Change
TEU's *	12,511 (219)	13,186 (231)	- 5.1 %
Calendar Year to Date	139,691 (250)	213,494 (382)	- 34.6 %
Fiscal Year to Date	61,588 (272)	70,346 (311)	- 12.5 %

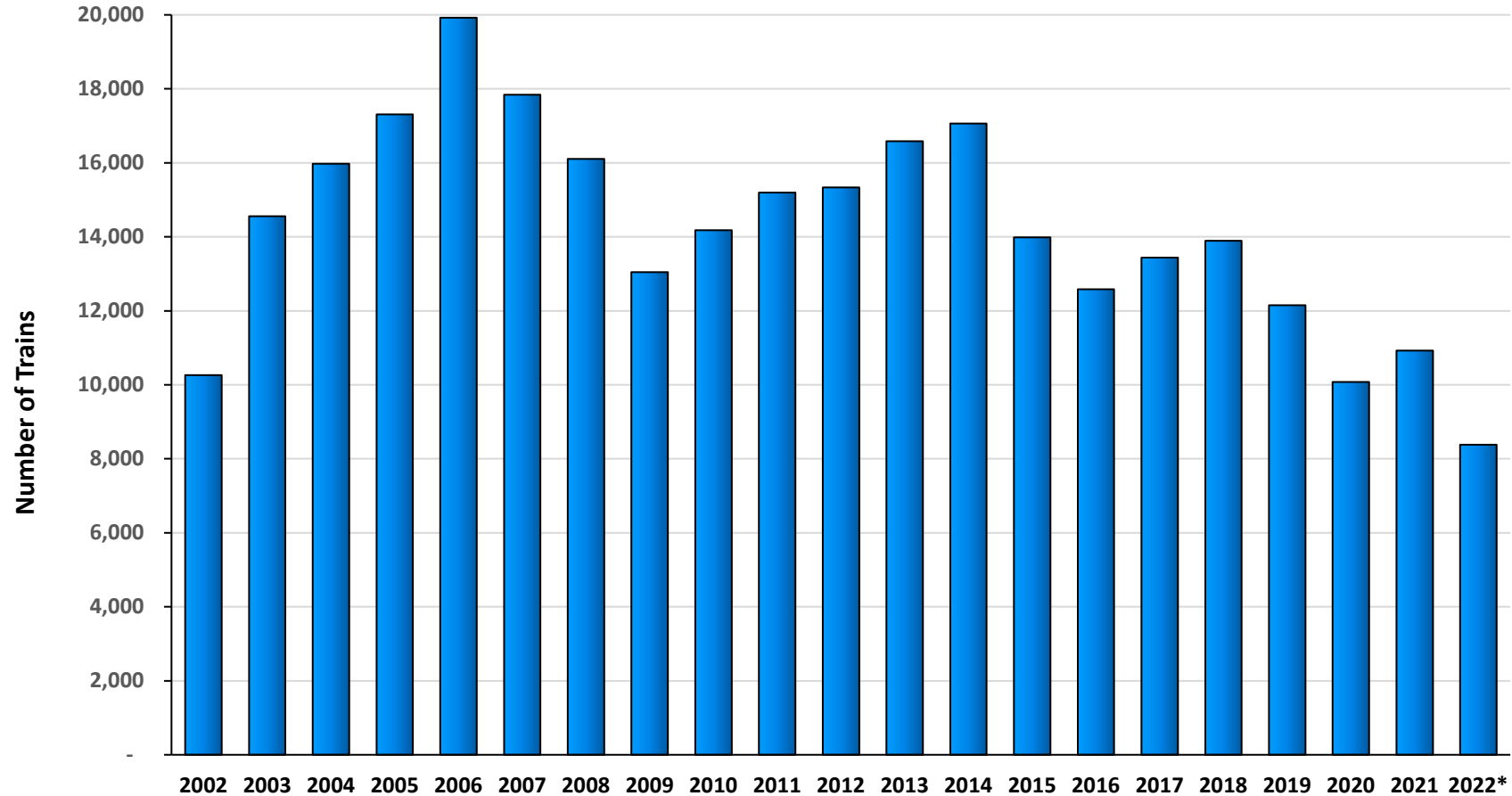
Operations – Combined

	'22	'21	Change
TEU's *	417,944 (7,326)	364,512 (6,389)	14.7 %
Calendar Year to Date	3,986,529 (7,125)	4,507,200 (8,056)	- 11.6 %
Fiscal Year to Date	1,743,790 (7,703)	1,690,457 (7,468)	- 3.2 %

Note: Numbers in () are the Average Daily Containers, Daily TEU's ÷ 1.82 = Containers

* Containers trucked to off-dock intermodal yards that are charged ACTA fee

Alameda Corridor Train Counts



Average Daily Trains**:

<u>2002</u>	<u>2003</u>	<u>2004</u>	<u>2005</u>	<u>2006</u>	<u>2007</u>	<u>2008</u>	<u>2009</u>	<u>2010</u>	<u>2011</u>	<u>2012</u>
39	40	44	47	55	49	44	36	39	42	42
<u>2013</u>	<u>2014</u>	<u>2015</u>	<u>2016</u>	<u>2017</u>	<u>2018</u>	<u>2019</u>	<u>2020</u>	<u>2021</u>	<u>2022</u>	
45	47	38	34	37	38	33	28	30	28	

- Calendar Year-to-Date
- ** Corridor Capacity 150 Trains per Day

Use Fees & Container Charges

as of October 31, 2022

