

Key Financial Activity

September '22 vs. '21

Corridor Performance

September '22 vs. '21

Railroad Self-Assessment Revenue

	'22	'21	Change
September Revenue	\$8.6 M	\$8.0 M	8.8 %
Calendar Year to Date (Jan-Sep) *	\$75.0 M	\$85.8 M	- 12.6 %
Fiscal Year to Date (July-Sep) *	\$26.9 M	\$26.4 M	1.9 %

* Note: Does not include reconciliations / adjustments for fiscal year-end.

Corridor Volumes

September '22 vs. '21

TEUs (Daily Containers)

Operations – On Corridor

	'22	'21	Change
TEU's *	410,140 (7,498)	393,637 (7,196)	4.2 %
Calendar Year to Date	3,441,355 (6,914)	3,942,380 (7,920)	- 12.7 %
Fiscal Year to Date	1,276,719 (7,611)	1,268,785 (7,564)	0.6 %

Operations – Around Corridor (Container Charges)

	'22	'21	Change
TEU's *	17,447 (319)	15,220 (278)	14.6 %
Calendar Year to Date	127,180 (256)	200,308 (402)	- 36.5 %
Fiscal Year to Date	49,077 (293)	57,160 (341)	- 14.1 %

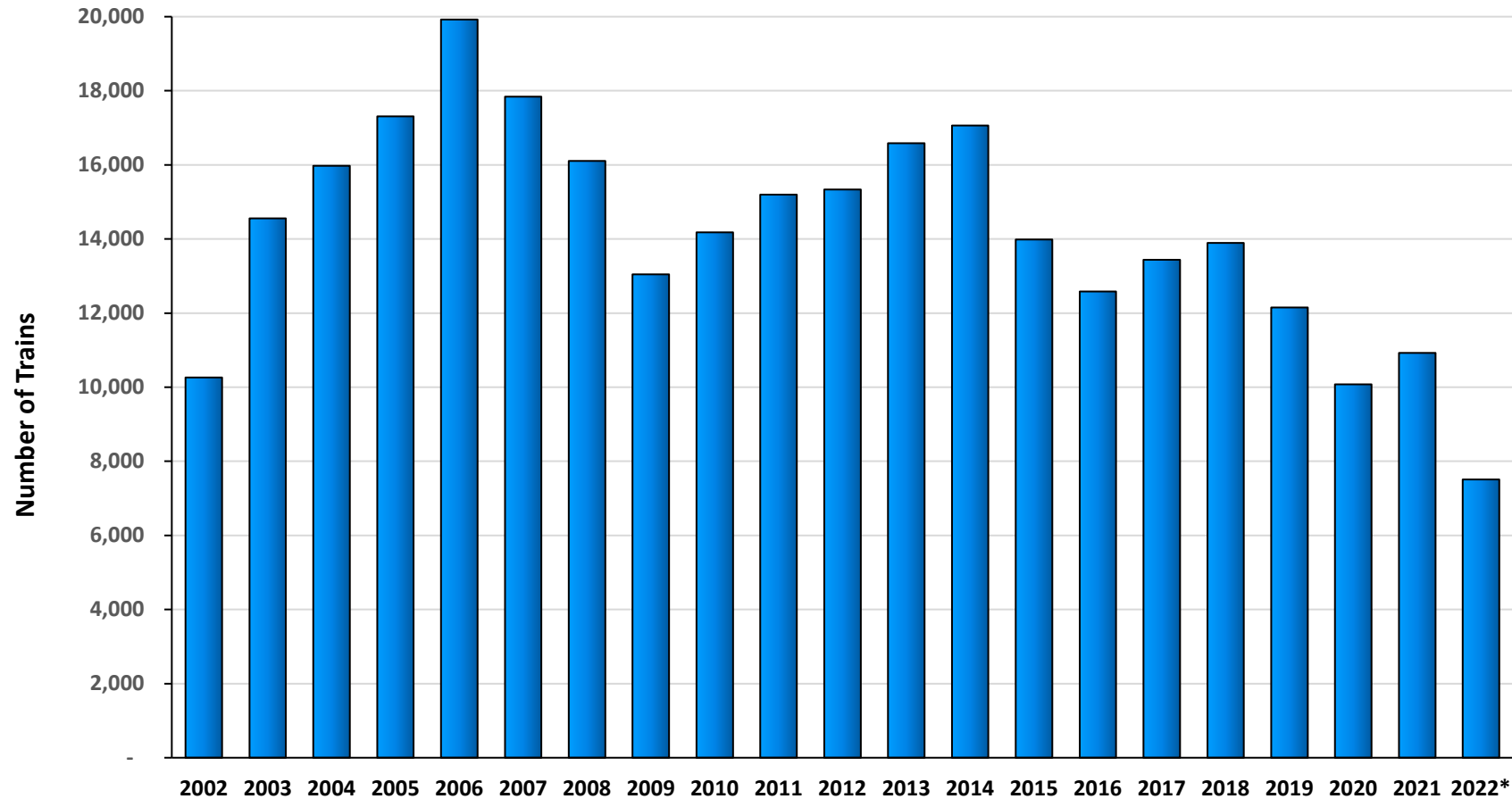
Operations – Combined

	'22	'21	Change
TEU's *	427,586 (7,817)	408,856 (7,475)	4.6 %
Calendar Year to Date	3,568,535 (7,169)	4,142,688 (8,323)	- 13.9 %
Fiscal Year to Date	1,325,796 (7,904)	1,324,945 (7,905)	0.0 %

Note: Numbers in () are the Average Daily Containers, Daily TEU's ÷ 1.82 = Containers

* Containers trucked to off-dock intermodal yards that are charged ACTA fee

Alameda Corridor Train Counts



Average Daily Trains**:

<u>2002</u>	<u>2003</u>	<u>2004</u>	<u>2005</u>	<u>2006</u>	<u>2007</u>	<u>2008</u>	<u>2009</u>	<u>2010</u>	<u>2011</u>	<u>2012</u>
39	40	44	47	55	49	44	36	39	42	42
<u>2013</u>	<u>2014</u>	<u>2015</u>	<u>2016</u>	<u>2017</u>	<u>2018</u>	<u>2019</u>	<u>2020</u>	<u>2021</u>	<u>2022</u>	
45	47	38	34	37	38	33	28	30	28	

- Calendar Year-to-Date
- ** Corridor Capacity 150 Trains per Day

Use Fees & Container Charges

as of September 30, 2022

