

Item 1

Performance Report October 2022

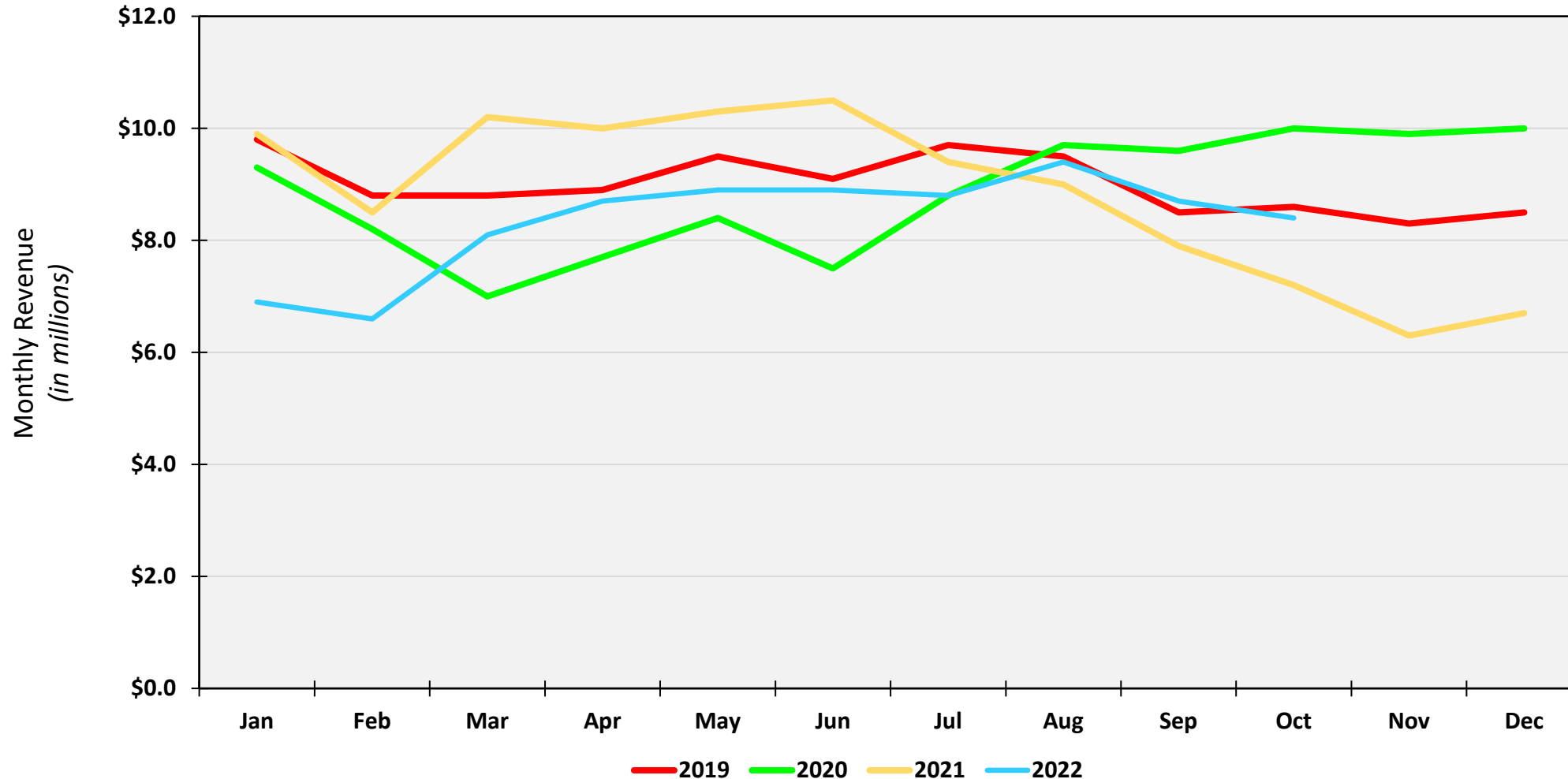
Port Container Throughput (TEUs) – October 2022

	POLA		POLB		Combined	
	Oct-22	%Change*	Oct-22	%Change*	Oct-22	%Change*
Imports	336,307	-28.0%	293,924	-23.7%	630,231	-26.1%
Exports	89,722	-8.7%	119,761	-2.0%	209,483	-5.0%
Total Loaded	426,029	-24.7%	413,685	-18.4%	839,714	-21.7%
Empty	252,400	-25.1%	244,743	-13.4%	497,143	-19.8%
Total	678,429	-24.8%	658,428	-16.6%	1,336,857	-21.0%
	YTD	%Change*	YTD	%Change*	YTD	%Change*
Imports	4,316,609	-8.6%	3,857,705	-0.1%	8,174,314	-4.8%
Exports	1,000,451	-2.9%	1,174,113	-3.3%	2,174,564	-3.1%
Total Loaded	5,317,060	-7.6%	5,031,818	-0.8%	10,348,878	-4.4%
Empty	3,225,884	-3.0%	2,968,993	5.7%	6,194,877	1.0%
Total	8,542,944	-5.9%	8,000,811	1.5%	16,543,755	-2.5%

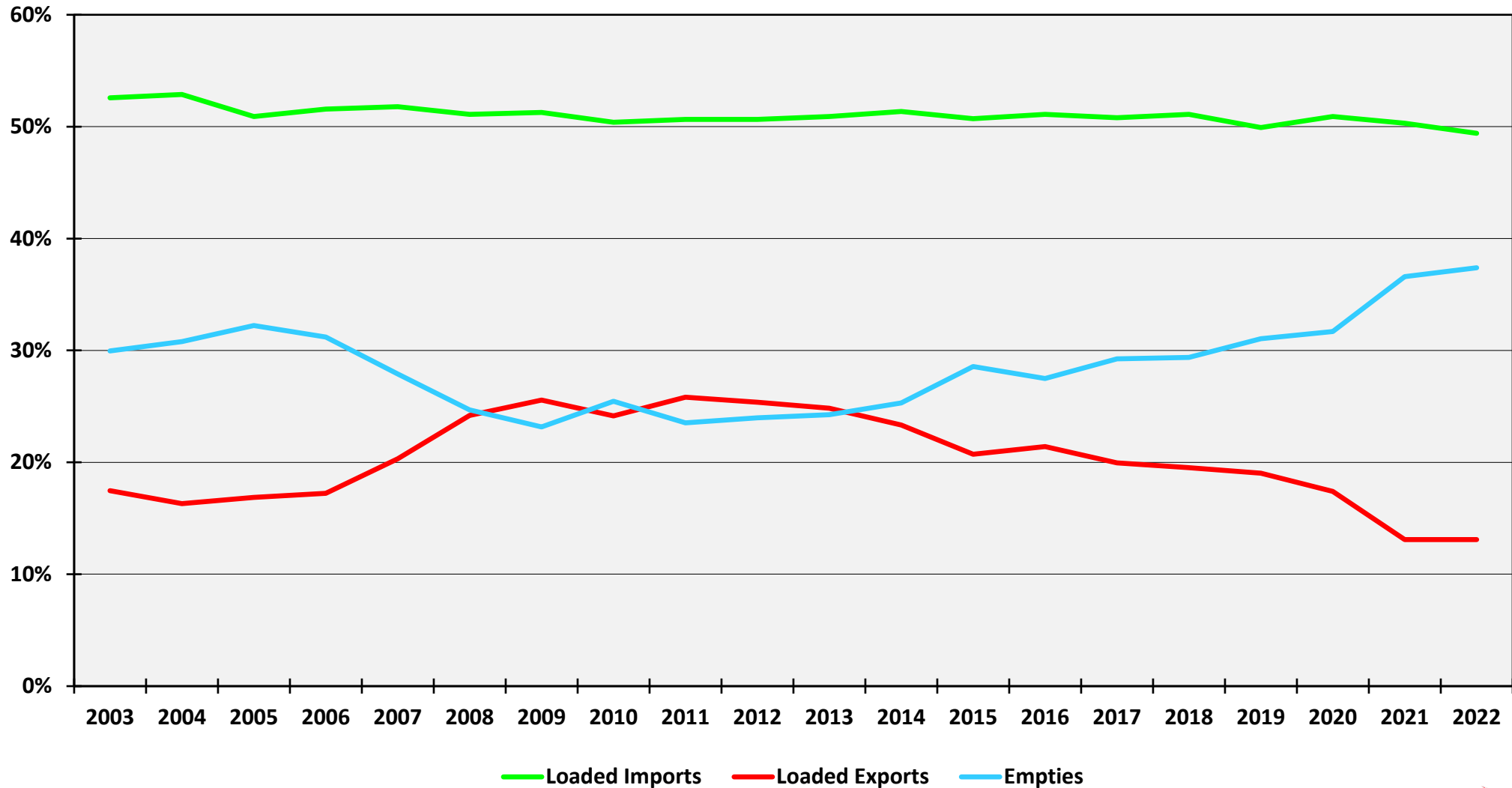
Alameda Corridor Performance October 2022

	Oct 2022	CY22	FY23
Revenue	\$8.4 M	\$83.4 M	\$35.3 M
Change from 2021	17.1 %	- 10.3 %	5.2 %
TEU's	417,994	3,986,529	1,743,790
Change from 2021	14.7 %	- 11.6 %	3.2 %

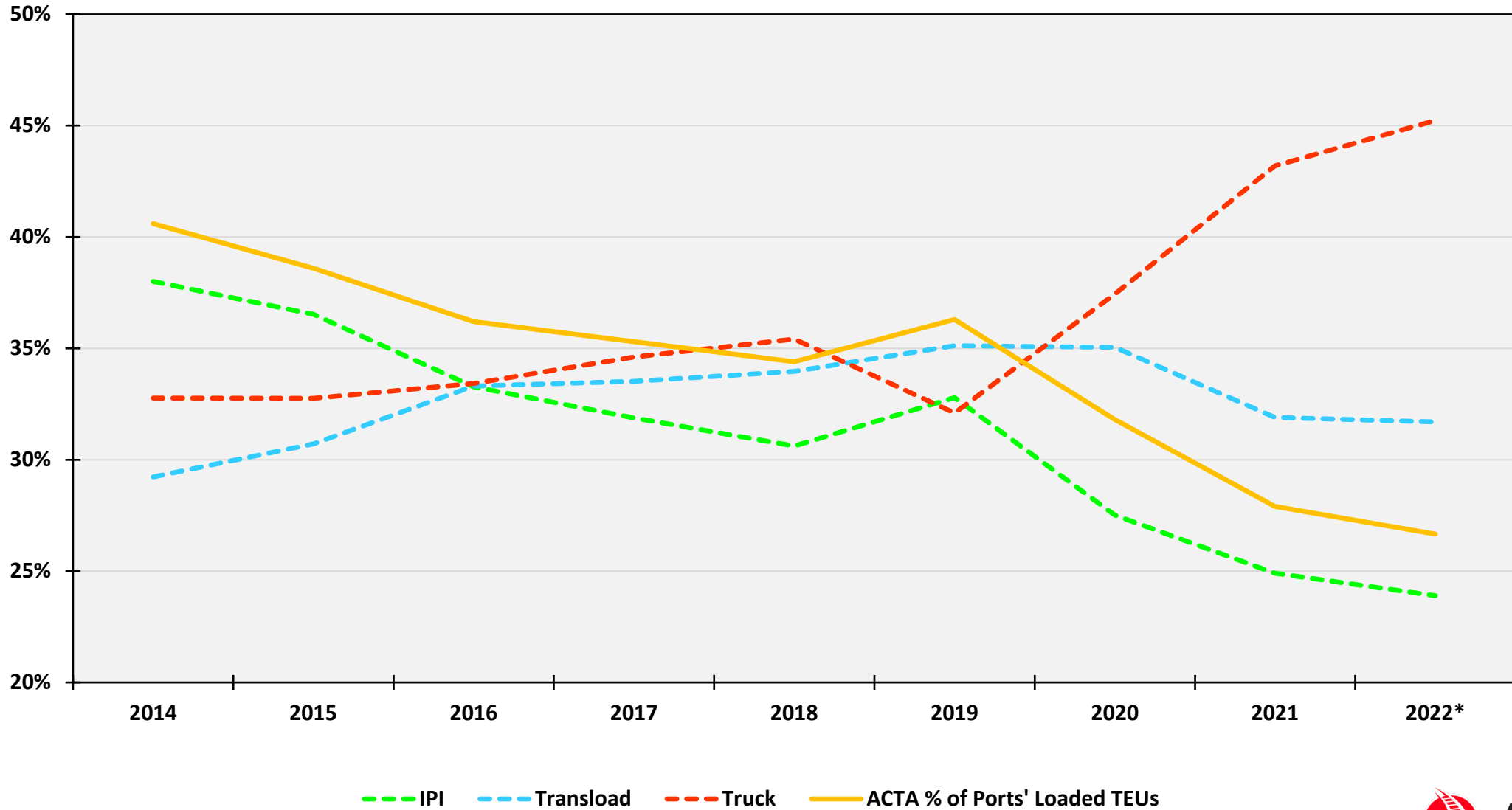
Corridor Revenue Performance CY2019, CY2020, CY2021 & YTD 2022



Port Cargo Components



Port Cargo Mode Split



* 2022 values are calculated using actual values through Sep 2022; Oct, Nov & Dec are forecast