

# *Item 1*

## **Performance Report September 2022**

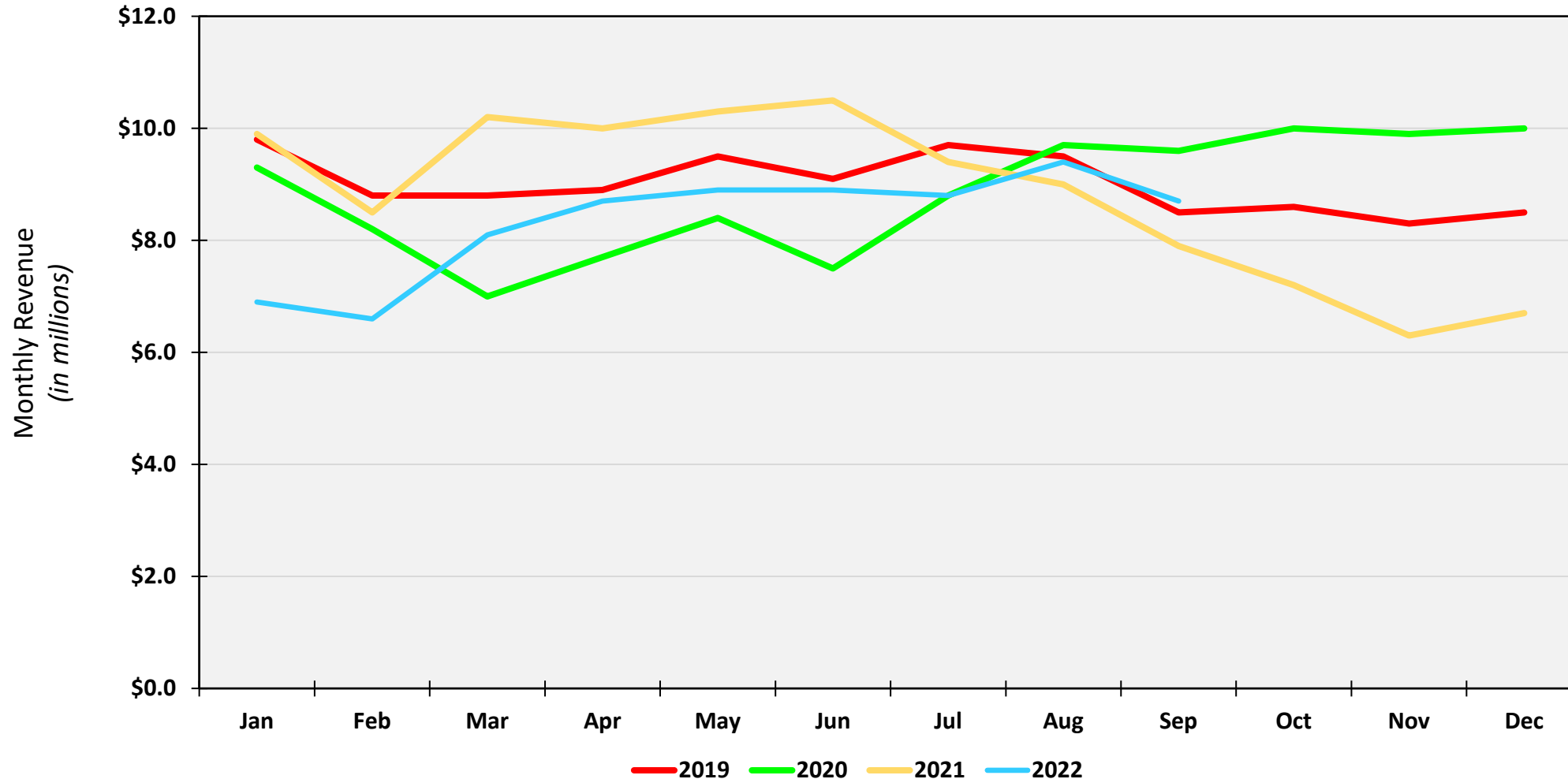
## Port Container Throughput (TEUs) – September 2022

	POLA		POLB		Combined	
	Sep-22	%Change*	Sep-22	%Change*	Sep-22	%Change*
Imports	343,462	-26.6%	342,671	-7.4%	686,133	-18.2%
Exports	77,680	2.6%	112,940	1.9%	190,620	2.2%
<b>Total Loaded</b>	<b>421,142</b>	<b>-22.6%</b>	<b>455,611</b>	<b>-5.3%</b>	<b>876,753</b>	<b>-14.4%</b>
Empty	288,731	-19.8%	286,212	7.0%	574,943	-8.4%
<b>Total</b>	<b>709,873</b>	<b>-21.5%</b>	<b>741,823</b>	<b>-0.9%</b>	<b>1,451,696</b>	<b>-12.1%</b>
	<b>YTD</b>	<b>%Change*</b>	<b>YTD</b>	<b>%Change*</b>	<b>YTD</b>	<b>%Change*</b>
Imports	3,980,302	-6.5%	3,563,781	2.5%	7,544,083	-2.4%
Exports	910,729	-2.3%	1,054,352	-3.4%	1,965,081	-2.9%
<b>Total Loaded</b>	<b>4,891,031</b>	<b>-5.8%</b>	<b>4,618,133</b>	<b>1.1%</b>	<b>9,509,164</b>	<b>-2.5%</b>
Empty	2,973,483	-0.5%	2,724,250	7.8%	5,697,733	3.3%
<b>Total</b>	<b>7,864,514</b>	<b>-3.8%</b>	<b>7,342,383</b>	<b>3.5%</b>	<b>15,206,897</b>	<b>-0.4%</b>

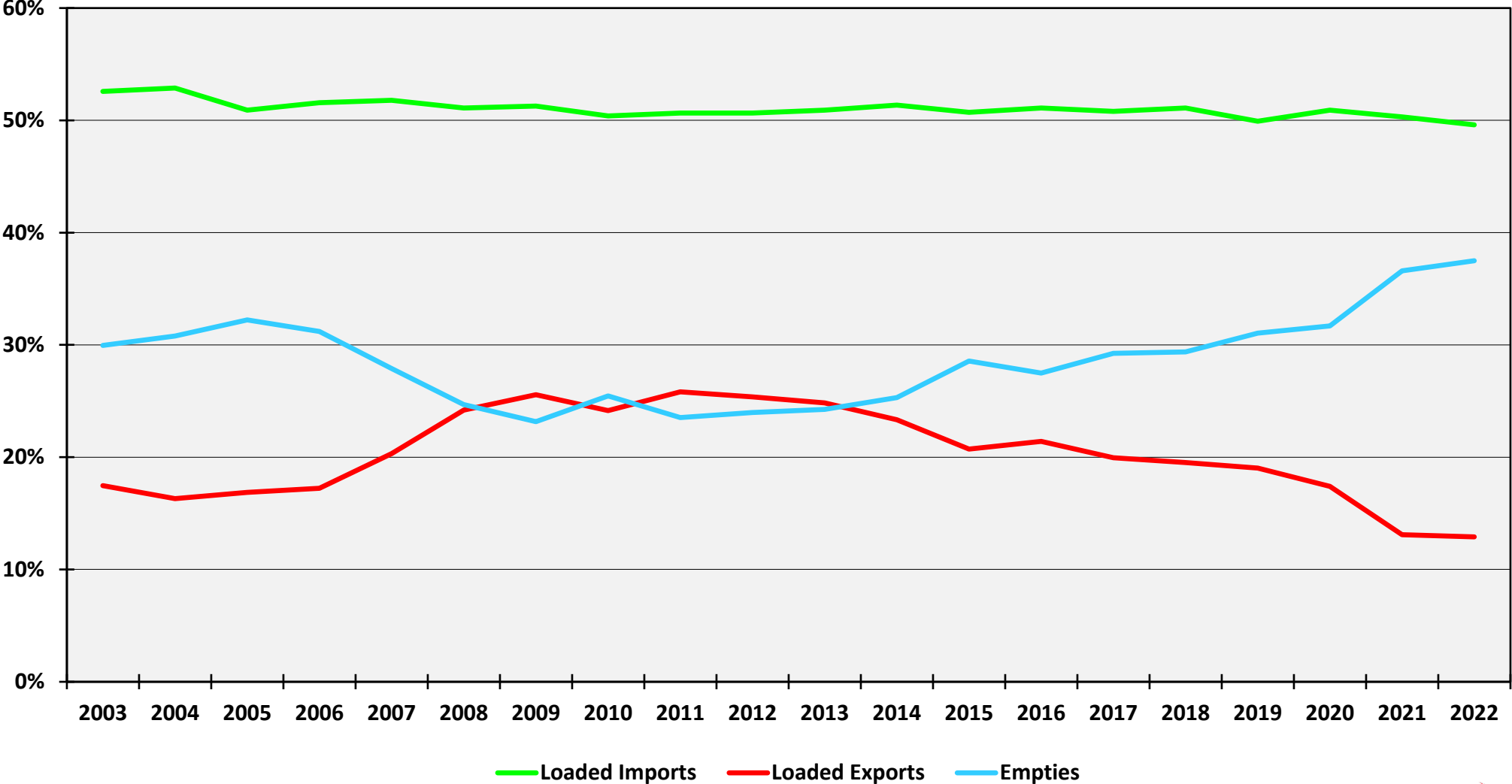
## Alameda Corridor Performance *September 2022*

	Sep 2022	CY22	FY23
<b>Revenue</b>	\$8.7 M	\$75.0 M	\$26.9 M
Change from 2021	8.8 %	- 12.6 %	1.9 %
<b>TEU's</b>	427,586	3,568,535	1,325,796
Change from 2021	4.6 %	- 13.9 %	- 0.0 %

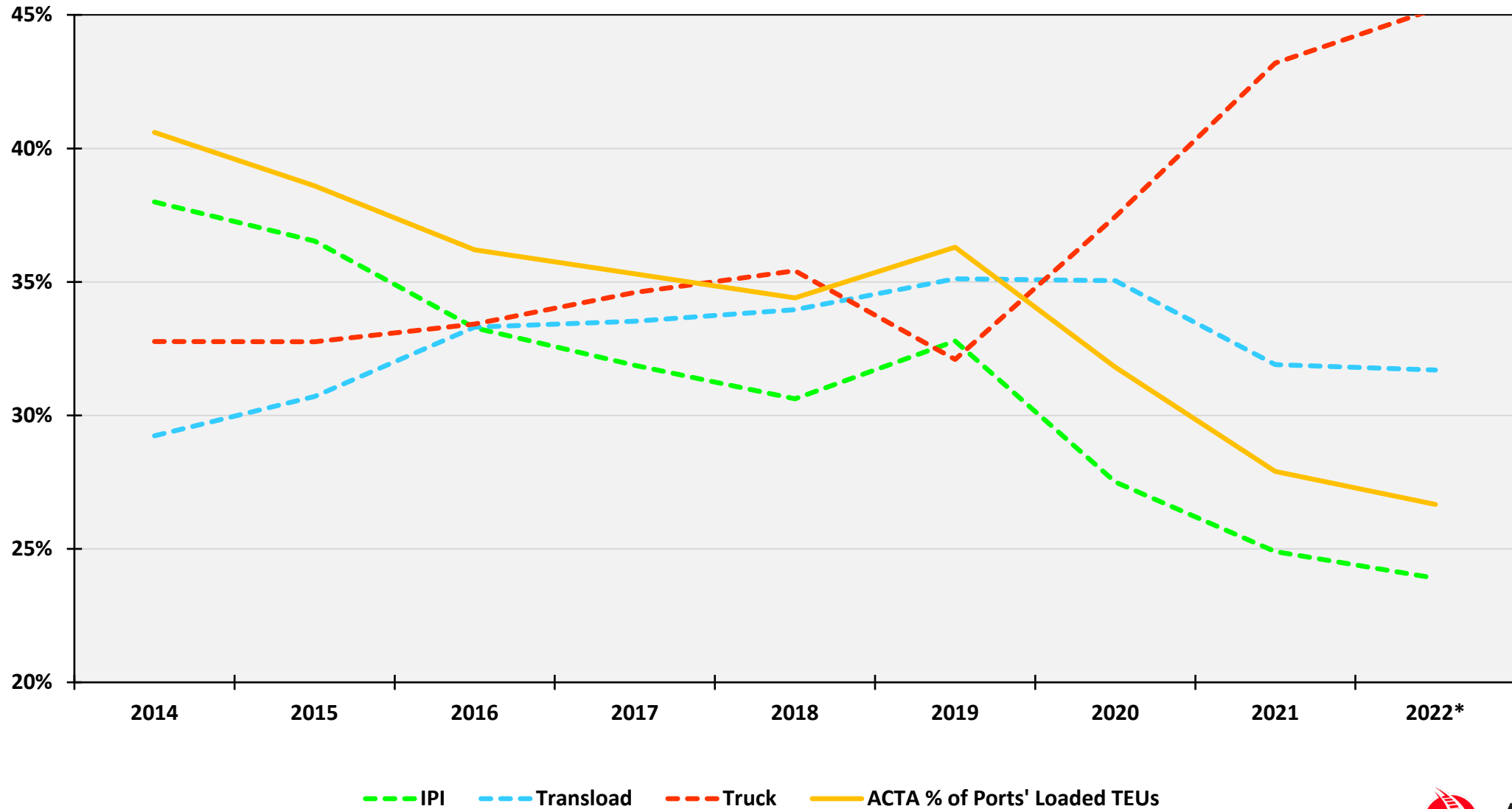
# Corridor Revenue Performance CY2019, CY2020, CY2021 & YTD 2022



# Port Cargo Components



# Port Cargo Mode Split



\* 2022 values are calculated using actual values through Sep 2022; Oct, Nov & Dec are forecast