

# *Item 1*

## **Performance Report August 2022**

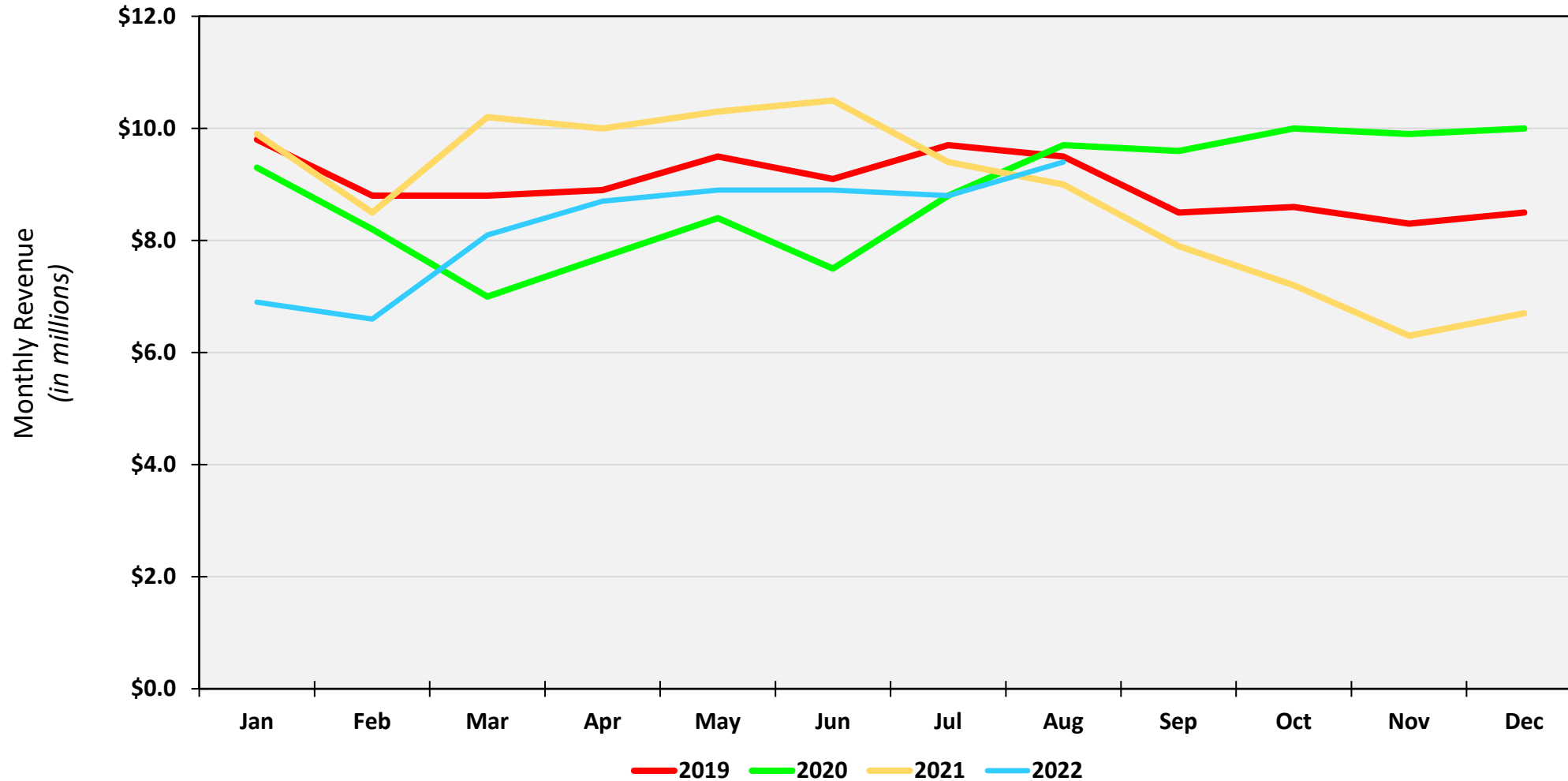
## Port Container Throughput (TEUs) – August 2022

	POLA		POLB		Combined	
	Aug-22	%Change*	Aug-22	%Change*	Aug-22	%Change*
<b>Imports</b>	403,602	- 16.9%	384,530	-5.6%	788,132	- 11.8%
<b>Exports</b>	102,319	1.0%	121,408	1.6%	223,727	1.3%
<b>Total Loaded</b>	<b>505,921</b>	<b>- 13.8%</b>	<b>505,938</b>	<b>- 4.0%</b>	<b>1,011,859</b>	<b>- 9.2%</b>
<b>Empty</b>	299,394	- 18.5%	301,002	7.2%	600,396	- 7.4%
<b>Total</b>	805,315	- 15.6%	806,940	-0.1%	1,612,255	- 8.5%
	<b>YTD</b>	<b>%Change*</b>	<b>YTD</b>	<b>%Change*</b>	<b>YTD</b>	<b>%Change*</b>
<b>Imports</b>	3,636,841	- 4.0%	3,221,110	3.7%	6,857,951	- 0.5%
<b>Exports</b>	833,048	- 2.7%	941,412	- 4.1%	1,774,460	- 3.4%
<b>Total Loaded</b>	<b>4,469,889</b>	<b>- 3.8%</b>	<b>4,162,522</b>	<b>1.9%</b>	<b>8,632,411</b>	<b>- 1.1%</b>
<b>Empty</b>	2,684,752	2.2%	2,438,038	7.9%	5,122,790	4.8%
<b>Total</b>	7,154,641	- 1.6%	6,600,560	4.0%	13,755,201	1.0%

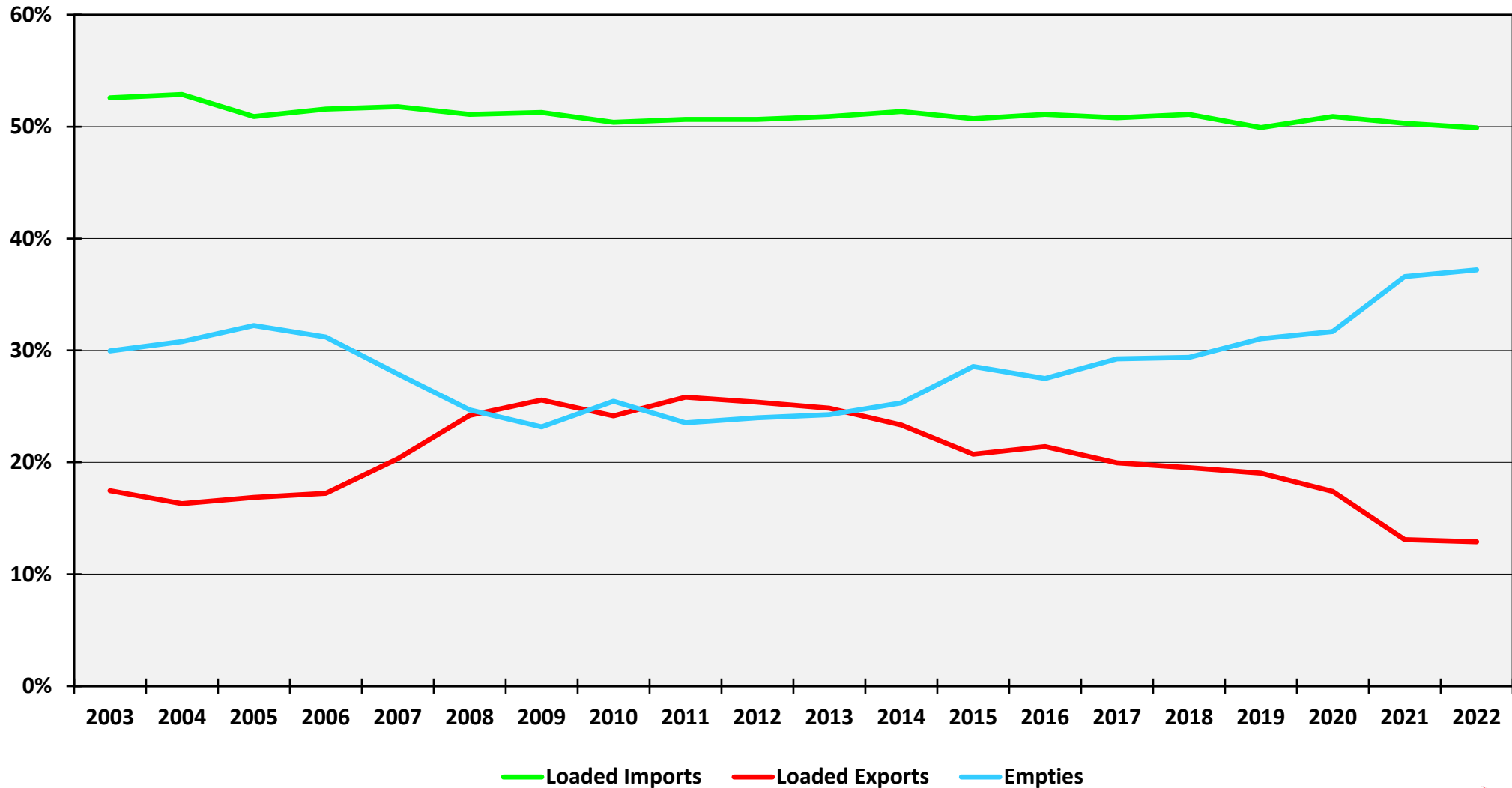
## Alameda Corridor Performance *August 2022*

	Aug 2022	CY22	FY23
<b>Revenue</b>	\$9.4 M	\$66.3 M	\$18.2 M
Change from 2021	4.2 %	- 14.8 %	- 1.0 %
<b>TEU's</b>	457,637	3,140,956	898,217
Change from 2021	2.0 %	- 15.9 %	- 2.1 %

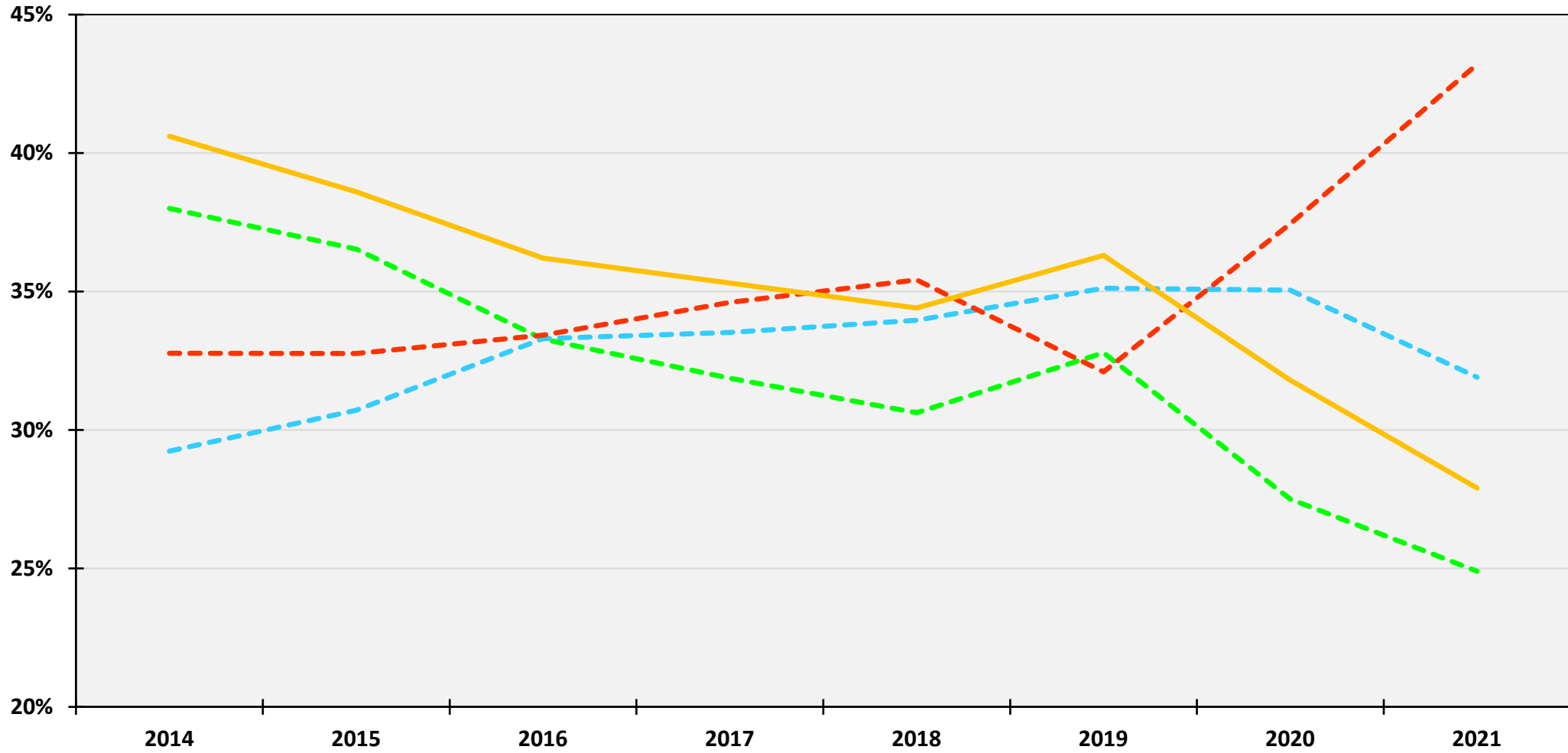
# Corridor Revenue Performance CY2019, CY2020, CY2021 & YTD 2022



# Port Cargo Components



# Port Cargo Mode Split



IPI Transload Truck ACTA % of Ports' Loaded TEUs