

# ***Key Financial Activity***

## ***November '21 vs. '20***



# Corridor Performance

## November '21 vs. '20

### *Railroad Self-Assessment Revenue*

	'21	'20	Change
<b>October Revenue</b>	<b>\$6.3 M</b>	<b>\$9.9 M</b>	<b>- 36.8 %</b>
Calendar Year to Date (Jan-Oct) *	\$99.3 M	\$96.0 M	3.4 %
Fiscal Year to Date (July-Oct) *	\$39.9 M	\$48.0 M	- 16.9 %

\* Note: Does not include reconciliations / adjustments for fiscal year-end.

# Corridor Volumes

## November '21 vs. '20

### TEUs (Daily Containers)

#### Operations – On Corridor

	'21	'20	Change
<b>TEU's *</b>	<b>299,352 (5,473)</b>	<b>430,394 (7,868)</b>	<b>- 30.5 %</b>
Calendar Year to Date	4,593,058 (7,542)	4,050,741 (6,632)	13.4 %
Fiscal Year to Date	1,919,464 (6,881)	2,074,867 (7,438)	- 7.5 %

#### Operations – Around Corridor (Container Charges)

	'21	'20	Change
<b>TEU's *</b>	<b>8,833 (161)</b>	<b>21,191 (387)</b>	<b>- 58.3 %</b>
Calendar Year to Date	222,327 (365)	219,797 (360)	1.2 %
Fiscal Year to Date	79,178 (284)	110,942 (398)	- 28.6 %

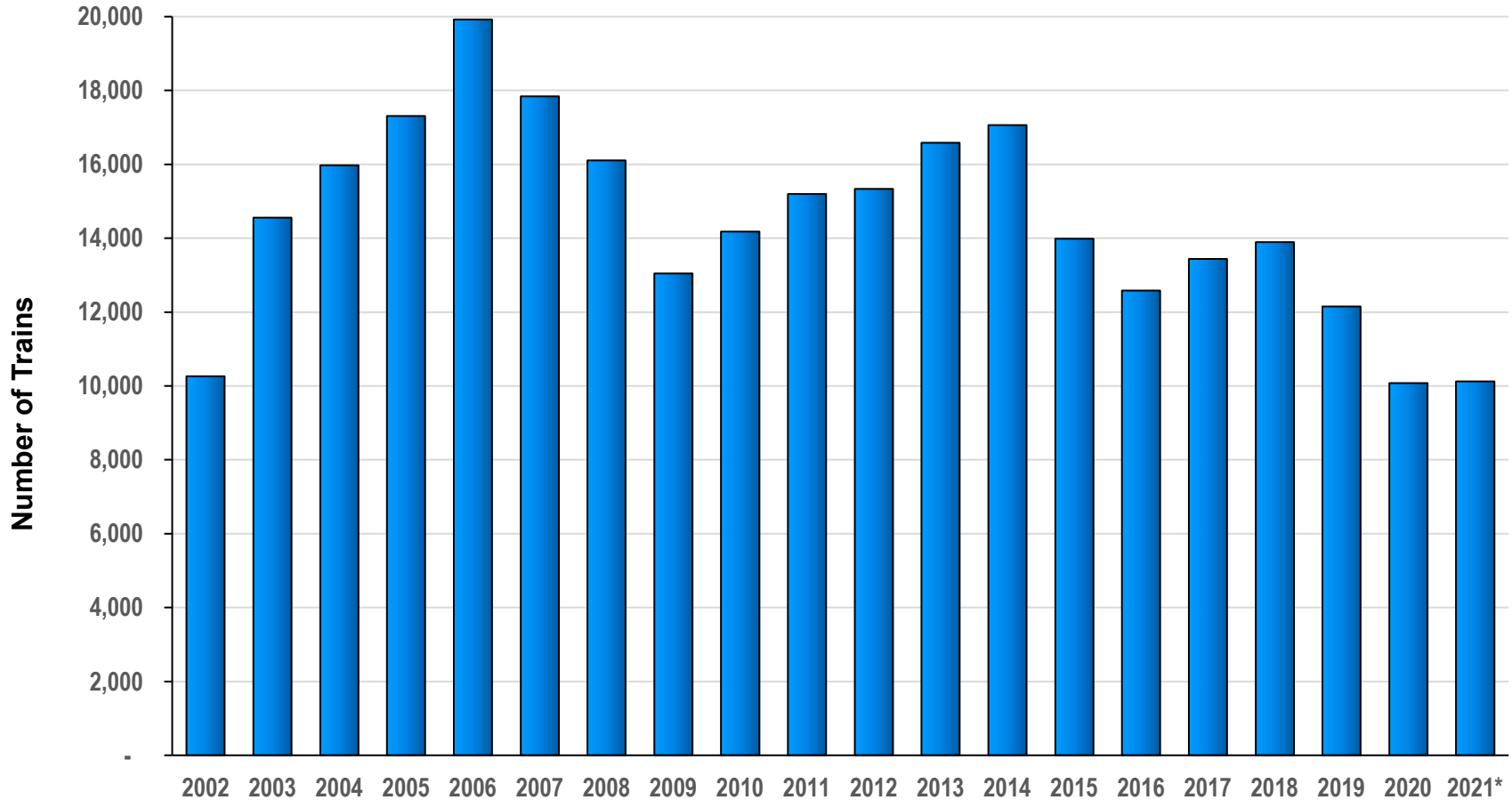
#### Operations – Combined

	'21	'20	Change
<b>TEU's *</b>	<b>308,184 (5,634)</b>	<b>451,586 (8,256)</b>	<b>- 31.8 %</b>
Calendar Year to Date	4,815,384 (7,907)	4,270,537 (6,992)	12.8 %
Fiscal Year to Date	1,998,642 (7,164)	2,185,809 (7,835)	- 8.6 %

Note: Numbers in ( ) are the Average Daily Containers, Daily TEU's ÷ 1.82 = Containers

\* Containers trucked to off-dock intermodal yards that are charged ACTA fee

# Alameda Corridor Train Counts



## Average Daily Trains\*\*:

<u>2002d</u>	<u>2003</u>	<u>2004</u>	<u>2005</u>	<u>2006</u>	<u>2007</u>	<u>2008</u>	<u>2009</u>	<u>2010</u>	<u>2011</u>
39	40	44	47	55	49	44	36	39	42
<u>2012</u>	<u>2013</u>	<u>2014</u>	<u>2015</u>	<u>2016</u>	<u>2017</u>	<u>2018</u>	<u>2019</u>	<u>2020</u>	<u>2021</u>
42	45	47	38	34	37	38	33	28	30

\* CYD

\*\* Corridor Capacity 150 Trains per Day

# Use Fees & Container Charges as of November 30, 2021

