

Key Financial Activity

October '21 vs. '20



Corridor Performance

October '21 vs. '20

Railroad Self-Assessment Revenue

	'21	'20	Change
October Revenue	\$7.2 M	\$10.0 M	- 28.1 %
Calendar Year to Date (Jan-Oct) *	\$93.0 M	\$86.1 M	8.0 %
Fiscal Year to Date (July-Oct) *	\$33.6 M	\$38.1 M	- 11.8 %

* Note: Does not include reconciliations / adjustments for fiscal year-end.

Corridor Volumes

October '21 vs. '20

TEUs (Daily Containers)

Operations – On Corridor

	'21	'20	Change
TEU's *	351,326 (6,216)	439,831 (7,782)	- 20.1 %
Calendar Year to Date	4,293,706 (7,746)	3,620,347 (6,510)	18.6 %
Fiscal Year to Date	1,620,112 (7,224)	1,644,473 (7,333)	- 1.5 %

Operations – Around Corridor (Container Charges)

	'21	'20	Change
TEU's *	13,186 (233)	21,266 (376)	- 38.0 %
Calendar Year to Date	213,494 (385)	198,605 (357)	7.5 %
Fiscal Year to Date	70,346 (314)	89,751 (400)	- 21.6 %

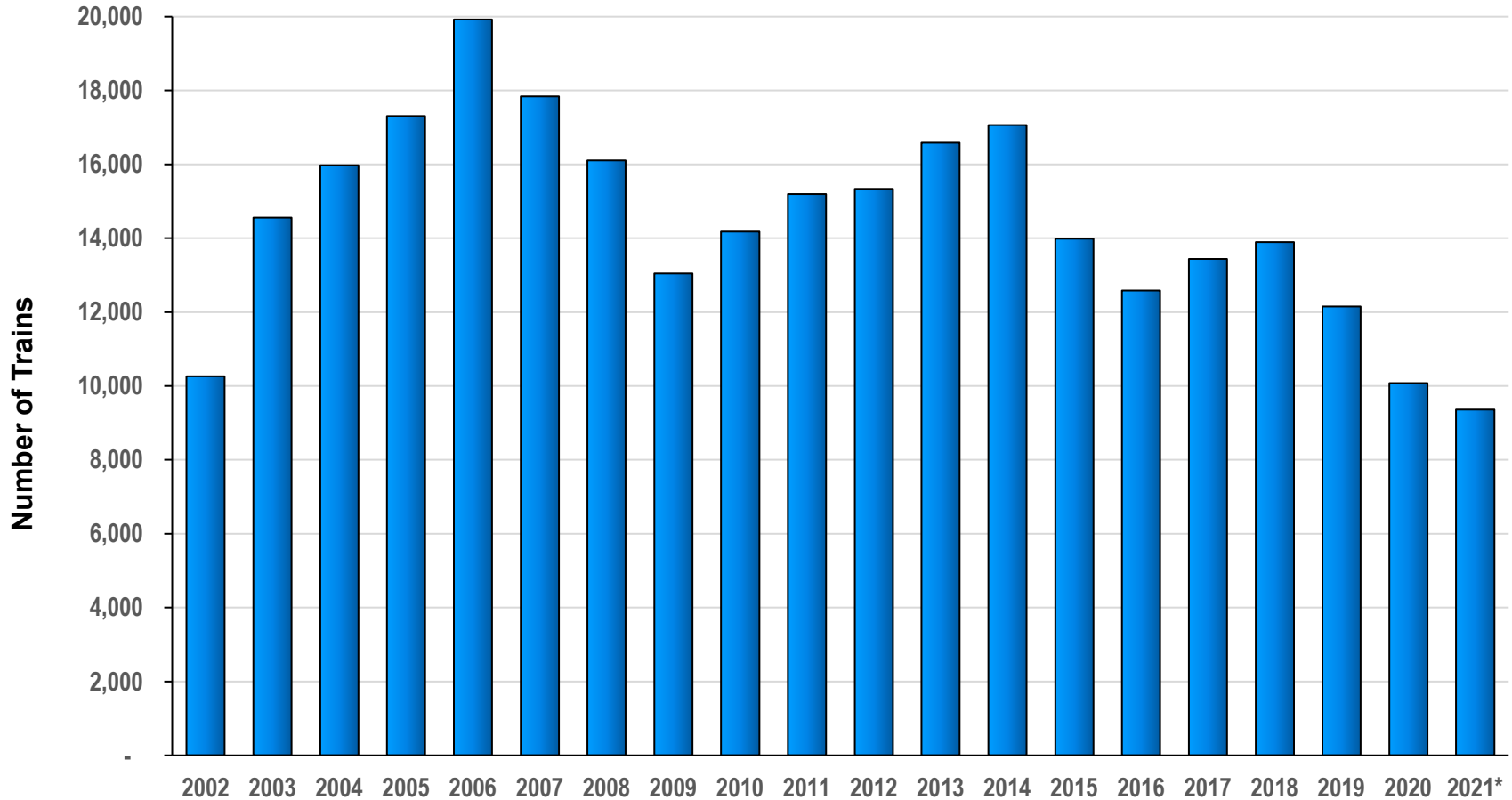
Operations – Combined

	'21	'20	Change
TEU's *	364,512 (6,449)	461,097 (8,158)	- 21.0 %
Calendar Year to Date	4,507,200 (8,132)	3,818,952 (6,867)	18.0 %
Fiscal Year to Date	1,690,457 (7,538)	1,734,223 (7,733)	- 2.5 %

Note: Numbers in () are the Average Daily Containers, Daily TEU's ÷ 1.82 = Containers

* Containers trucked to off-dock intermodal yards that are charged ACTA fee

Alameda Corridor Train Counts



Average Daily Trains**:

<u>2002d</u>	<u>2003</u>	<u>2004</u>	<u>2005</u>	<u>2006</u>	<u>2007</u>	<u>2008</u>	<u>2009</u>	<u>2010</u>	<u>2011</u>
39	40	44	47	55	49	44	36	39	42
<u>2012</u>	<u>2013</u>	<u>2014</u>	<u>2015</u>	<u>2016</u>	<u>2017</u>	<u>2018</u>	<u>2019</u>	<u>2020</u>	<u>2021</u>
42	45	47	38	34	37	38	33	28	31

* CYD

** Corridor Capacity 150 Trains per Day

Use Fees & Container Charges

as of October 31, 2021

