

# ***Key Financial Activity***

***June '21 vs. '20***



# Corridor Performance

## *June '21 vs. '20*

### *Railroad Self-Assessment Revenue*

	'21	'20	Change
<b>June Revenue</b>	<b>\$10.5 M</b>	<b>\$7.5 M</b>	<b>40.4 %</b>
<b>Calendar Year to Date (Jan-June) *</b>	<b>\$59.4 M</b>	<b>\$48.0 M</b>	<b>23.8 %</b>
<b>Fiscal Year to Date (July-June) *</b>	<b>\$117.4 M</b>	<b>\$101.0 M</b>	<b>16.3 %</b>

\* Note: Does not include reconciliations / adjustments for fiscal year-end.

# Corridor Volumes

## June '21 vs. '20

### TEUs (Daily Containers)

#### Operations – On Corridor

	'21	'20	Change
<b>TEU's *</b>	<b>486,839 (8,900)</b>	<b>313,134 (5,725)</b>	<b>55.5 %</b>
Calendar Year to Date	2,673,594 (8,101)	1,975,874 (5,954)	35.3 %
Fiscal Year to Date	5,185,327 (7,792)	4,352,859 (6,523)	19.1 %

#### Operations – Around Corridor (Container Charges)

	'21	'20	Change
<b>TEU's *</b>	<b>27,693 (506)</b>	<b>19,137 (350)</b>	<b>44.7 %</b>
Calendar Year to Date	143,148 (434)	108,855 (328)	31.5 %
Fiscal Year to Date	274,069 (412)	228,666 (343)	19.9 %

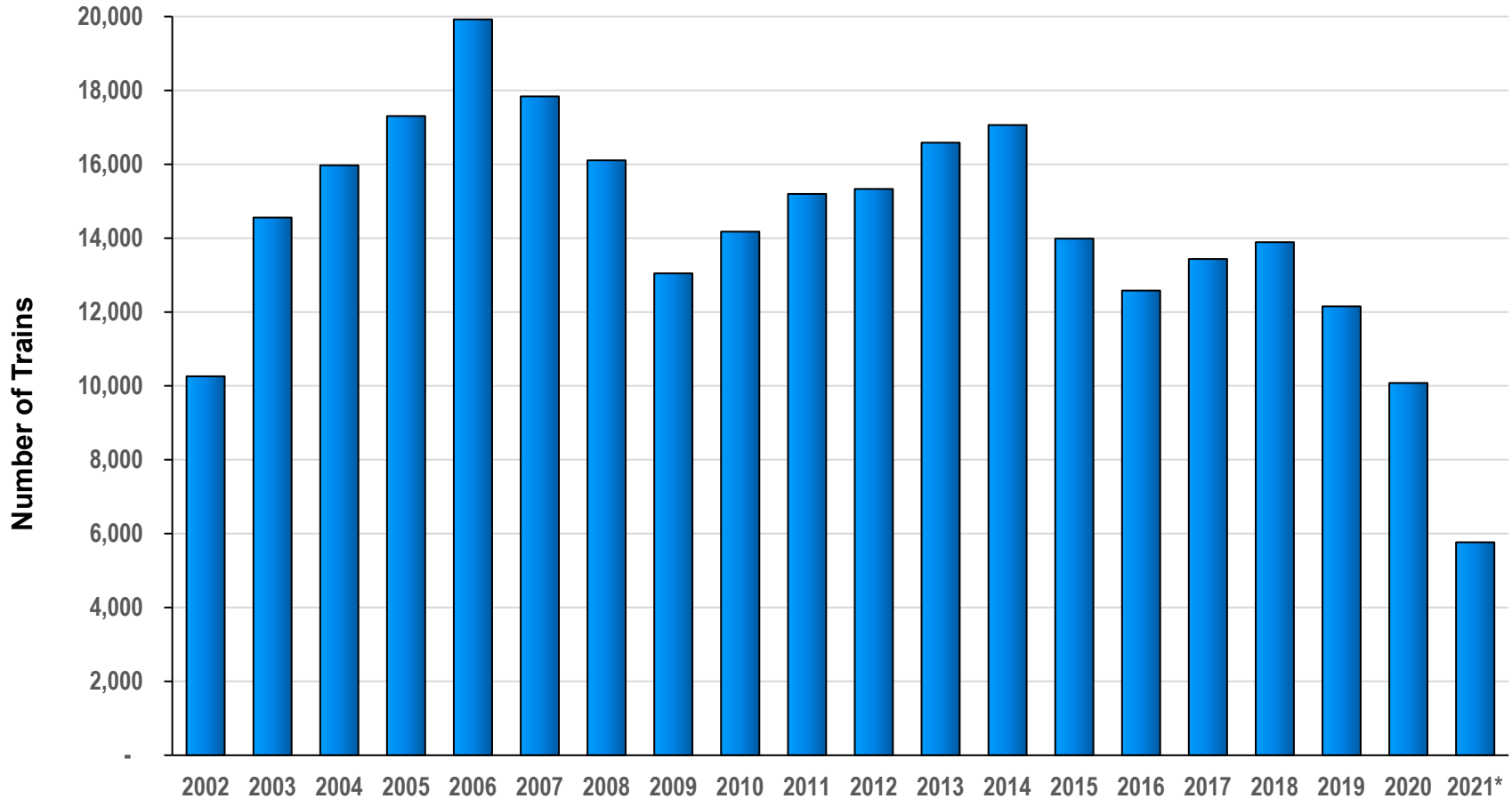
#### Operations – Combined

	'21	'20	Change
<b>TEU's *</b>	<b>514,532 (9,407)</b>	<b>332,271 (6,075)</b>	<b>54.9 %</b>
Calendar Year to Date	2,816,742 (8,535)	2,084,729 (6,282)	35.1 %
Fiscal Year to Date	5,459,396 (8,203)	4,581,525 (6,865)	19.2 %

Note: Numbers in ( ) are the Average Daily Containers, Daily TEU's ÷ 1.82 = Containers

\* Containers trucked to off-dock intermodal yards that are charged ACTA fee

# Alameda Corridor Train Counts



## Average Daily Trains\*\*:

<u>2002d</u>	<u>2003</u>	<u>2004</u>	<u>2005</u>	<u>2006</u>	<u>2007</u>	<u>2008</u>	<u>2009</u>	<u>2010</u>	<u>2011</u>
39	40	44	47	55	49	44	36	39	42
<u>2012</u>	<u>2013</u>	<u>2014</u>	<u>2015</u>	<u>2016</u>	<u>2017</u>	<u>2018</u>	<u>2019</u>	<u>2020</u>	<u>2021</u>
42	45	47	38	34	37	38	33	28	32

\* CYD

\*\* Corridor Capacity 150 Trains per Day

# Use Fees & Container Charges

## as of June 30, 2021

