

Performance Comparison

March '17 vs. '16



Performance Comparison

March '17 vs. '16, CY17 & FY17 Year to Date

Operations

	'17	'16	Change
Trains (Daily)	1,066 (34.4)	946 (30.5)	12.7 %
Calendar Year to Date	3,204 (35.6)	3,096 (34.0)	3.5 %
Fiscal Year to Date	9,476 (34.6)	9,663 (35.1)	- 1.9 %

Railroad Self-Assessment Revenue

	'17	'16	Change
Revenue	\$8.4 M	\$7.5 M	12.1%
Calendar Year to Date	\$25.6 M	\$24.6 M	3.8 %
Fiscal Year to Date *	\$74.9 M	\$77.2 M	- 3.0 %

* Note: Does not include reconciliations / adjustments for fiscal year-end.

Performance Use Fees & Container Charges

March '17 vs. '16, CY17 & FY17 Year to Date

Operations – On Corridor (Use Fees)

	'17	'16	Change
TEU's *	336,470 (6,227)	310,552 (5,748)	8.4 %
Calendar Year to Date	1,041,988 (6,643)	1,041,432 (6,566)	0.1 %
Fiscal Year to Date	3,102,964 (6,498)	3,387,695 (7,068)	- 8.4 %

Operations – Around Corridor (Container Charges)

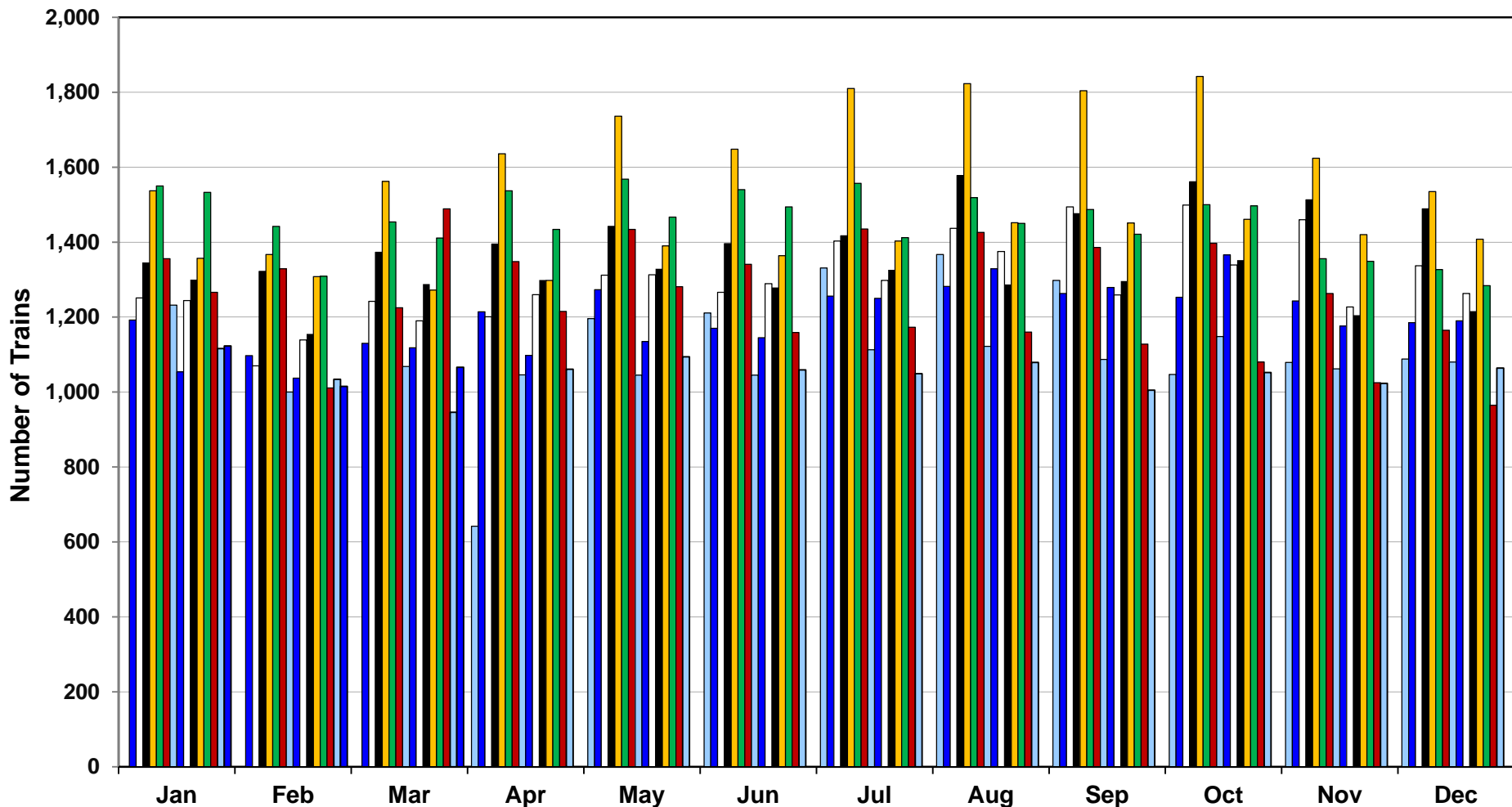
	'17	'16	Change
TEU's *	39,131 (724)	37,926 (702)	3.2 %
Calendar Year to Date	116,111 (740)	114,996 (725)	1.0 %
Fiscal Year to Date	335,187 (702)	361,258 (754)	- 7.2 %

Operations – Combined

	'17	'16	Change
TEU's *	375,601 (6,952)	348,478 (6,450)	7.8 %
Calendar Year to Date	1,158,099 (7,383)	1,156,428 (7,291)	0.1 %
Fiscal Year to Date	3,438,151 (7,199)	3,748,953 (7,822)	- 8.3 %

* Note: Numbers in () are the Average Daily Containers, Daily TEU's ÷ 1.74 = Containers.

Alameda Corridor Train Counts



Average Daily Trains*:

<u>2002</u>	<u>2003</u>	<u>2004</u>	<u>2005</u>	<u>2006</u>	<u>2007</u>	<u>2008</u>	<u>2009</u>	<u>2010</u>	<u>2011</u>	<u>2012</u>	<u>2013</u>	<u>2014</u>	<u>2015</u>	<u>2016</u>	<u>2017</u>
39	40	44	47	55	49	44	36	39	42	42	45	47	38	34	36

2002	2003	2004	2005	2006	2007
2008	2009	2010	2011	2012	2013
2014	2015	2016	2017		

* Corridor Capacity 150 Trains per Day

Use Fees & Container Charges

as of March 31, 2017

