

Performance Comparison

September '20 vs. '19



Corridor Performance

September '20 vs. '19

Railroad Self-Assessment Revenue

	'20	'19	Change
September Revenue	\$9.6 M	\$8.5 M	12.5 %
Calendar Year to Date (Jan-Sept)	\$76.1 M	\$82.5 M	- 7.9 %
Fiscal Year to Date (July-Sept)*	\$28.1 M	\$27.7 M	1.4 %

* Note: Does not include reconciliations / adjustments for fiscal year-end.

Corridor Volumes

September '20 vs. '19

TEUs (Daily Containers)

Operations – On Corridor

	'20	'19	Change
September	421,045 (7,892)	387,831 (7,270)	8.6 %
Calendar Year to Date (Jan-Sept)	3,180,515 (6,527)	3,645,891 (7,510)	- 12.8 %
Fiscal Year to Date (July-Sept)	1,204,642 (7,363)	1,241,613 (7,589)	- 3.0 %

Operations – Around Corridor*

	'20	'19	Change
September	22,113 (414)	18,885 (354)	17.1 %
Calendar Year to Date (Jan-Sept)	177,339 (364)	186,854 (385)	- 5.1 %
Fiscal Year to Date (July-Sept)	68,484 (419)	63,602 (389)	7.7 %

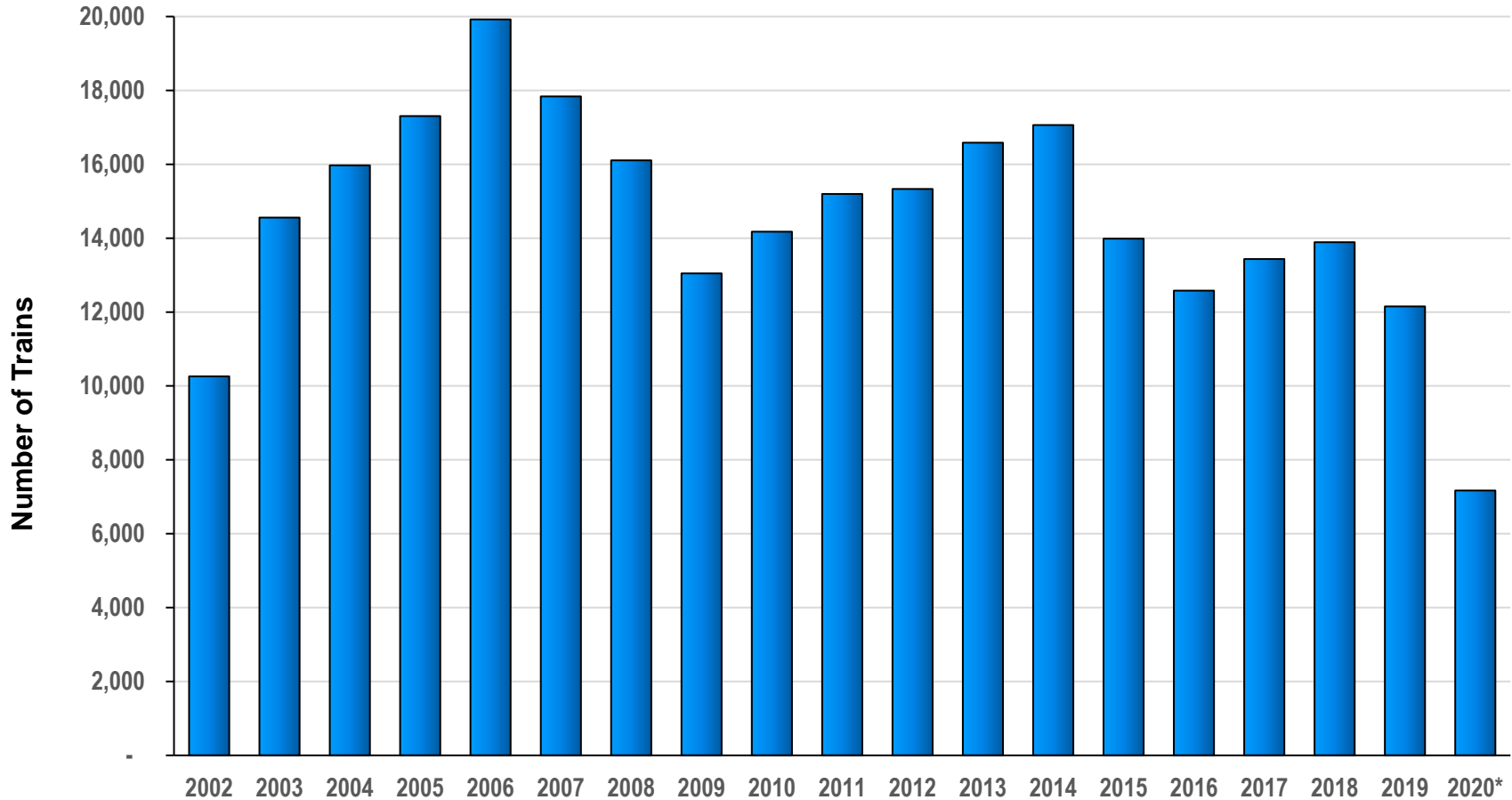
Operations – Combined

	'19	'18	Change
September	443,157 (8,307)	406,716 (7,624)	9.0 %
Calendar Year to Date (Jan-Sept)	3,357,855 (6,891)	3,832,744 (7,895)	- 12.4 %
Fiscal Year to Date (July-Sept)	1,273,126 (7,782)	1,305,215 (7,978)	- 2.5 %

Note: Numbers in () are the Average Daily Containers, Daily TEU's ÷ 1.78 = Containers

* - Containers trucked to inland intermodal yards that are charged ACTA fee

Alameda Corridor Train Counts



Average Daily Trains**:

<u>2002</u>	<u>2003</u>	<u>2004</u>	<u>2005</u>	<u>2006</u>	<u>2007</u>	<u>2008</u>	<u>2009</u>	<u>2010</u>	<u>2011</u>
39	40	44	47	55	49	44	36	39	42
<u>2012</u>	<u>2013</u>	<u>2014</u>	<u>2015</u>	<u>2016</u>	<u>2017</u>	<u>2018</u>	<u>2019</u>	<u>2020</u>	
42	45	47	38	34	37	38	33	26	

* CYD

** Corridor Capacity 150 Trains per Day

Use Fees & Container Charges

as of September 30, 2020

