

Transmittal #1

Performance Comparison

March '19 vs. '18



Performance Comparison

March '19 vs. '18, CY19 & FY19 Year to Date

Operations

	'19	'18	Change
Trains (Daily)	1,037 (33.5)	1,144 (36.9)	- 9.4 %
Calendar Year to Date	3,306 (36.7)	3,376 (37.5)	- 2.1 %
Fiscal Year to Date	10,303 (37.6)	10,233 (37.3)	0.7 %

Railroad Self-Assessment Revenue

	'19	'18	Change
Revenue	\$8.8 M	\$9.2 M	- 4.3 %
Calendar Year to Date	\$27.4 M	\$27.5 M	- 0.6 %
Fiscal Year to Date *	\$82.6 M	\$81.1 M	1.8 %

* Note: Does not include reconciliations / adjustments for fiscal year-end.

Performance Use Fees & Container Charges

March '19 vs. '18, CY19 & FY19 Year to Date

Operations – On Corridor (Use Fees)

	'19	'18	Change
TEU's *	379,152 (6,878)	388,186 (7,042)	- 2.3 %
Calendar Year to Date	1,221,402 (7,632)	1,169,491 (7,307)	4.4 %
Fiscal Year to Date	3,756,908 (7,710)	3,546,949 (7,279)	5.9 %

Operations – Around Corridor (Container Charges)

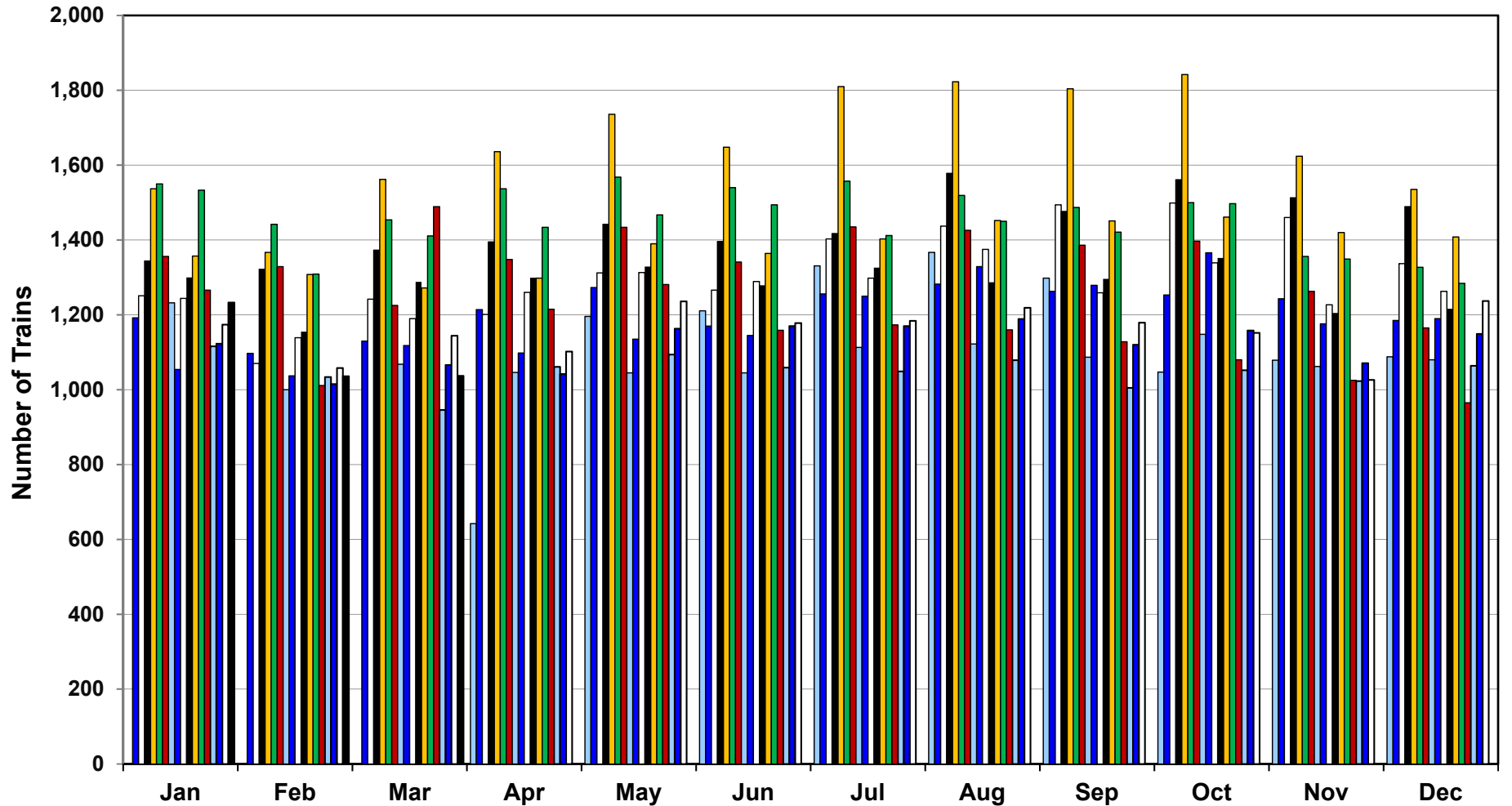
	'19	'18	Change
TEU's *	20,457 (371)	27,507 (499)	- 25.6 %
Calendar Year to Date	59,763 (373)	87,627 (548)	- 31.8 %
Fiscal Year to Date	190,671 (391)	279,765 (574)	- 31.9 %

Operations – Combined

	'19	'18	Change
TEU's *	399,609 (7,249)	415,693 (7,541)	- 3.9 %
Calendar Year to Date	1,281,165 (8,005)	1,257,118 (7,855)	1.9%
Fiscal Year to Date	3,947,579 (8,102)	3,826,714 (7,854)	3.2 %

* Note: Numbers in () are the Average Daily Containers, Daily TEU's ÷ 1.78 = Containers.

Alameda Corridor Train Counts



Average Daily Trains*:

<u>2002</u>	<u>2003</u>	<u>2004</u>	<u>2005</u>	<u>2006</u>	<u>2007</u>	<u>2008</u>	<u>2009</u>	<u>2010</u>
39	40	44	47	55	49	44	36	39
<u>2011</u>	<u>2012</u>	<u>2013</u>	<u>2014</u>	<u>2015</u>	<u>2016</u>	<u>2017</u>	<u>2018</u>	<u>2019</u>
42	42	45	47	38	34	37	38	37

2002	2003	2004	2005	2006	2007
2008	2009	2010	2011	2012	2013
2014	2015	2016	2017	2018	2019

* Corridor Capacity 150 Trains per Day

Use Fees & Container Charges

as of March 31, 2019

