

Performance Comparison

November '18 vs. '17



Performance Comparison

November '18 vs. '17, CY18 & FY19 Year to Date

Operations

	'18	'17	Change
Trains (Daily)	1,026 (34.2)	1,071 (35.7)	- 4.2 %
Calendar Year to Date	12,652 (37.9)	12,287 (36.8)	3.0 %
Fiscal Year to Date	5,760 (37.6)	5,708 (37.3)	0.9 %

Railroad Self-Assessment Revenue

	'18	'17	Change
Revenue	\$8.8 M	\$8.2 M	7.0 %
Calendar Year to Date	\$102.0 M	\$96.5 M	5.7 %
Fiscal Year to Date *	\$45.9 M	\$44.5 M	3.2 %

* Note: Does not include reconciliations / adjustments for fiscal year-end.

Performance Use Fees & Container Charges

November '18 vs. '17, CY18 & FY19 Year to Date

Operations – On Corridor (Use Fees)

	'18	'17	Change
TEU's *	407,875 (7,685)	353,663 (6,663)	15.3 %
Calendar Year to Date	4,486,787 (7,593)	4,172,661 (7,061)	7.5 %
Fiscal Year to Date	2,102,850 (7,769)	1,983,836 (7,329)	6.0 %

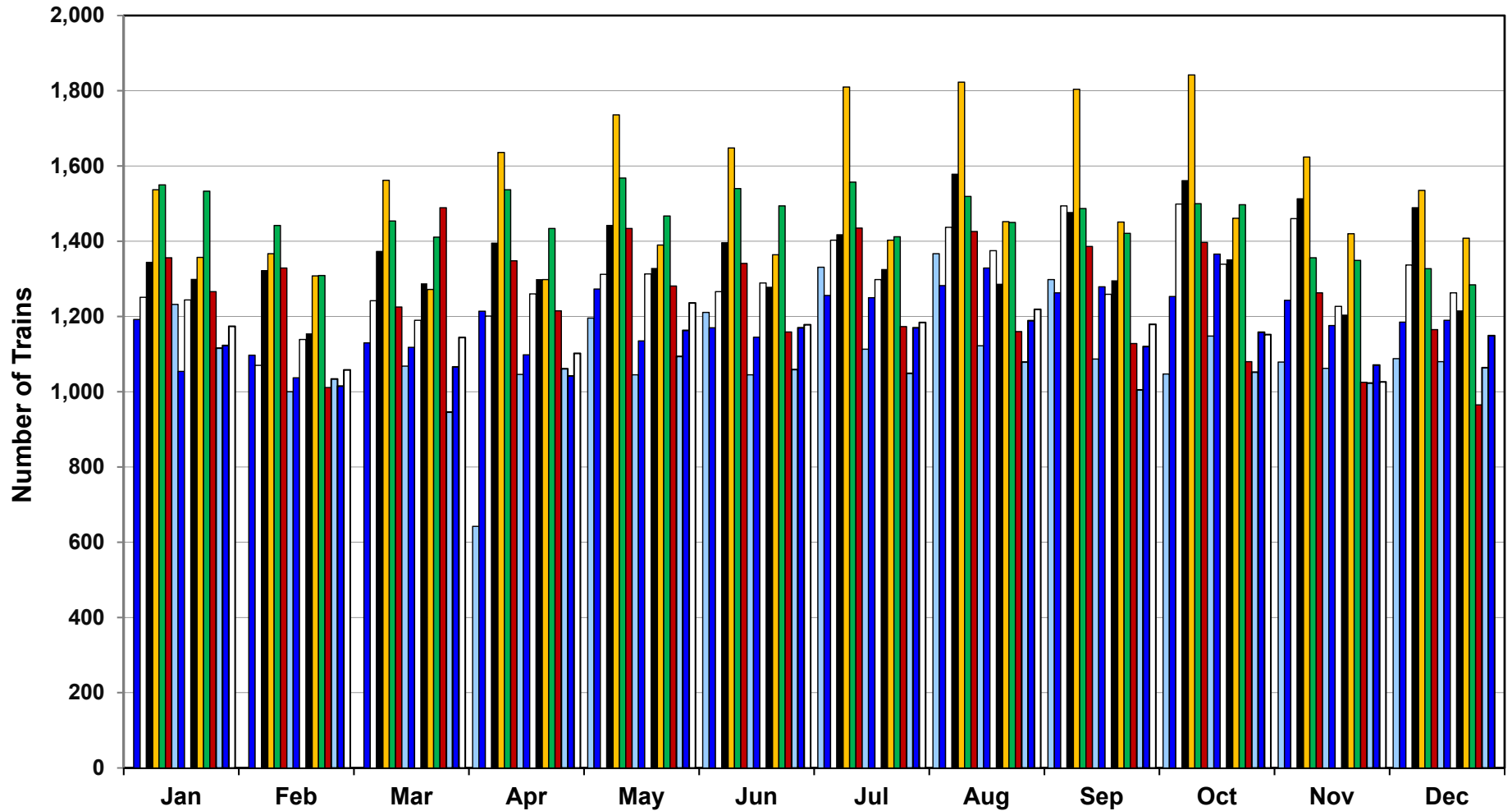
Operations – Around Corridor (Container Charges)

	'18	'17	Change
TEU's *	18,449 (348)	27,610 (520)	- 33.2 %
Calendar Year to Date	276,428 (468)	374,087 (633)	-26.1 %
Fiscal Year to Date	110,871 (410)	159,402 (589)	- 30.5 %

Operations – Combined

	'18	'17	Change
TEU's *	426,324 (8,032)	381,272 (7,184)	11.8 %
Calendar Year to Date	4,763,214 (8,061)	4,546,748 (7,694)	4.8 %
Fiscal Year to Date	2,213,721 (8,178)	2,143,238 (7,918)	3.3%

Alameda Corridor Train Counts



Average Daily Trains*:

<u>2002</u>	<u>2003</u>	<u>2004</u>	<u>2005</u>	<u>2006</u>	<u>2007</u>	<u>2008</u>	<u>2009</u>	<u>2010</u>
39	40	44	47	55	49	44	36	39
<u>2011</u>	<u>2012</u>	<u>2013</u>	<u>2014</u>	<u>2015</u>	<u>2016</u>	<u>2017</u>	<u>2018</u>	
42	42	45	47	38	34	37	38	

2002	2003	2004	2005	2006	2007
2008	2009	2010	2011	2012	2013
2014	2015	2016	2017	2018	

* Corridor Capacity 150 Trains per Day

Use Fees & Container Charges

as of November 30, 2018

