

Transmittal #1

Performance Comparison

January '19 vs. '18



Performance Comparison

January '19 vs. '18, CY19 & FY19 Year to Date

Operations

	'19	'18	Change
Trains (Daily)	1,233 (39.8)	1,174 (37.9)	5.0 %
Calendar Year to Date	1,233 (39.8)	1,174 (37.9)	5.0 %
Fiscal Year to Date	8,230 (38.3)	8,031 (37.4)	2.5 %

Railroad Self-Assessment Revenue

	'19	'18	Change
Revenue	\$9.8 M	\$9.3 M	4.5 %
Calendar Year to Date	\$9.8 M	\$9.3 M	4.5 %
Fiscal Year to Date *	\$65.0 M	\$62.9 M	3.3 %

* Note: Does not include reconciliations / adjustments for fiscal year-end.

Performance Use Fees & Container Charges

January '19 vs. '18, CY19 & FY19 Year to Date

Operations – On Corridor (Use Fees)

	'19	'18	Change
TEU's *	445,226 (8,076)	400,745 (7,269)	11.1 %
Calendar Year to Date	445,226 (8,076)	400,745 (7,269)	11.1 %
Fiscal Year to Date	2,980,733 (7,796)	2,778,202 (7,266)	7.3 %

Operations – Around Corridor (Container Charges)

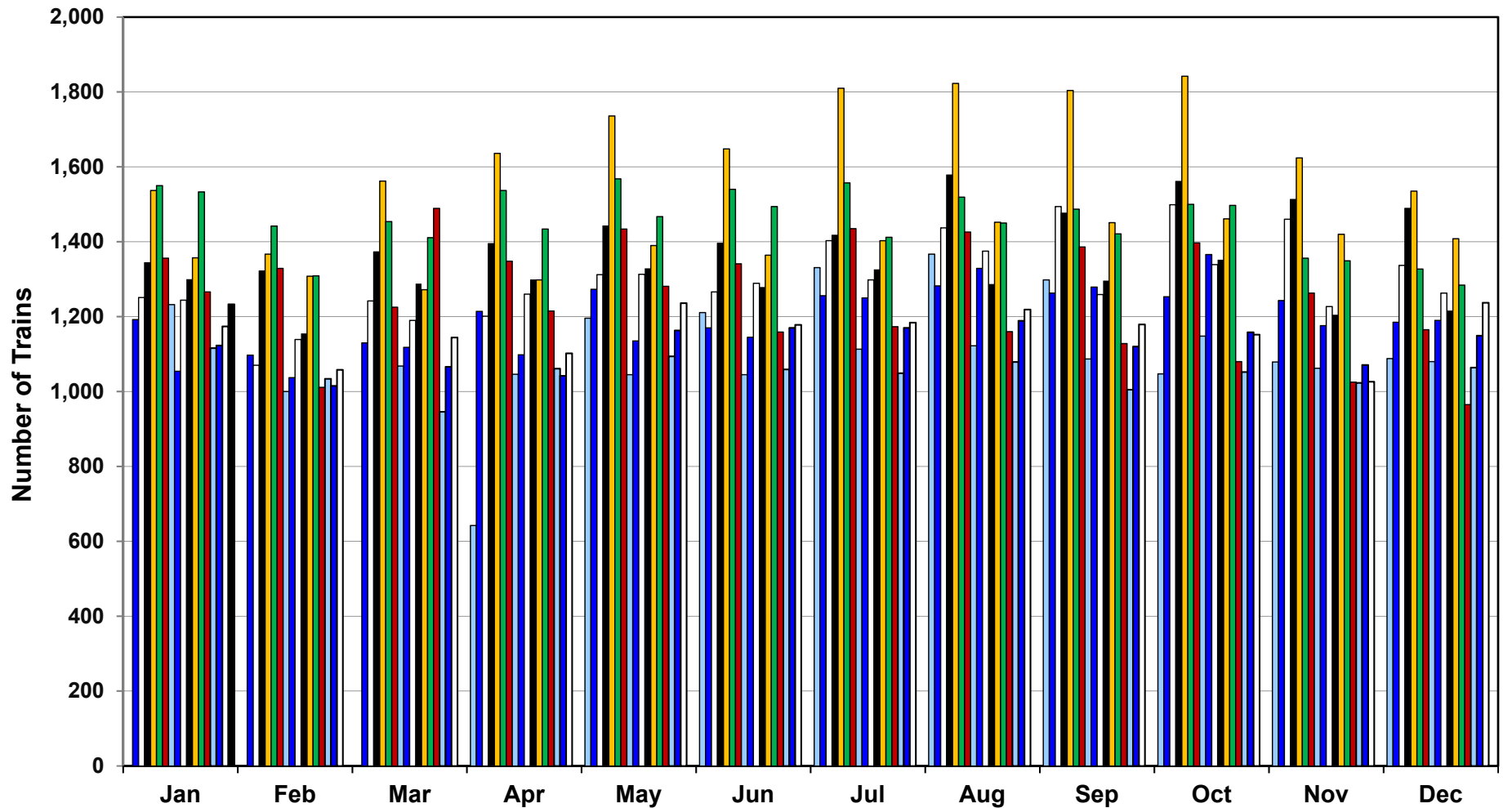
	'19	'18	Change
TEU's *	20,531 (372)	31,618 (574)	- 35.1 %
Calendar Year to Date	20,531 (372)	31,618 (574)	- 35.1 %
Fiscal Year to Date	151,439 (396)	223,756 (585)	- 32.3 %

Operations – Combined

	'19	'18	Change
TEU's *	465,757 (8,449)	432,362 (7,843)	7.7 %
Calendar Year to Date	465,757 (8,449)	432,362 (7,843)	7.7 %
Fiscal Year to Date	3,132,172 (8,192)	3,001,959 (7,852)	4.3 %

* Note: Numbers in () are the Average Daily Containers, Daily TEU's ÷ 1.78 = Containers.

Alameda Corridor Train Counts



Average Daily Trains*:

<u>2002</u>	<u>2003</u>	<u>2004</u>	<u>2005</u>	<u>2006</u>	<u>2007</u>	<u>2008</u>	<u>2009</u>	<u>2010</u>
39	40	44	47	55	49	44	36	39
<u>2011</u>	<u>2012</u>	<u>2013</u>	<u>2014</u>	<u>2015</u>	<u>2016</u>	<u>2017</u>	<u>2018</u>	<u>2019</u>
42	42	45	47	38	34	37	38	40

2002	2003	2004	2005	2006	2007
2008	2009	2010	2011	2012	2013
2014	2015	2016	2017	2018	2019

* Corridor Capacity 150 Trains per Day

Use Fees & Container Charges

as of January 31, 2019

