

Performance Comparison

January '20 vs. '19



Performance Comparison

January '20 vs. '19, CY20 & FY20 Year to Date

Operations

	'20	'19	Change
Trains (Daily)	964 (31.1)	1,233 (39.8)	- 21.8 %
Calendar Year to Date	964 (31.1)	1,233 (39.8)	- 21.8 %
Fiscal Year to Date	6,831 (31.8)	8,230 (38.3)	- 17.0 %

Railroad Self-Assessment Revenue

	'20	'19	Change
Revenue	\$9.3 M	\$9.8 M	- 5.3 %
Calendar Year to Date	\$9.3 M	\$9.8 M	- 5.3 %
Fiscal Year to Date *	\$62.3 M	\$65.0 M	- 4.2 %

* Note: Does not include reconciliations / adjustments for fiscal year-end.

Performance Use Fees & Container Charges

January '20 vs. '19, CY20 & FY20 Year to Date

Operations – On Corridor (Use Fees)

	'20	'19	Change
TEU's *	395,316 (7,171)	445,226 (8,076)	- 11.21 %
Calendar Year to Date	395,316 (7,171)	445,226 (8,076)	- 11.21 %
Fiscal Year to Date	2,772,301 (7,251)	2,980,733 (7,796)	- 7.0 %

Operations – Around Corridor (Container Charges)

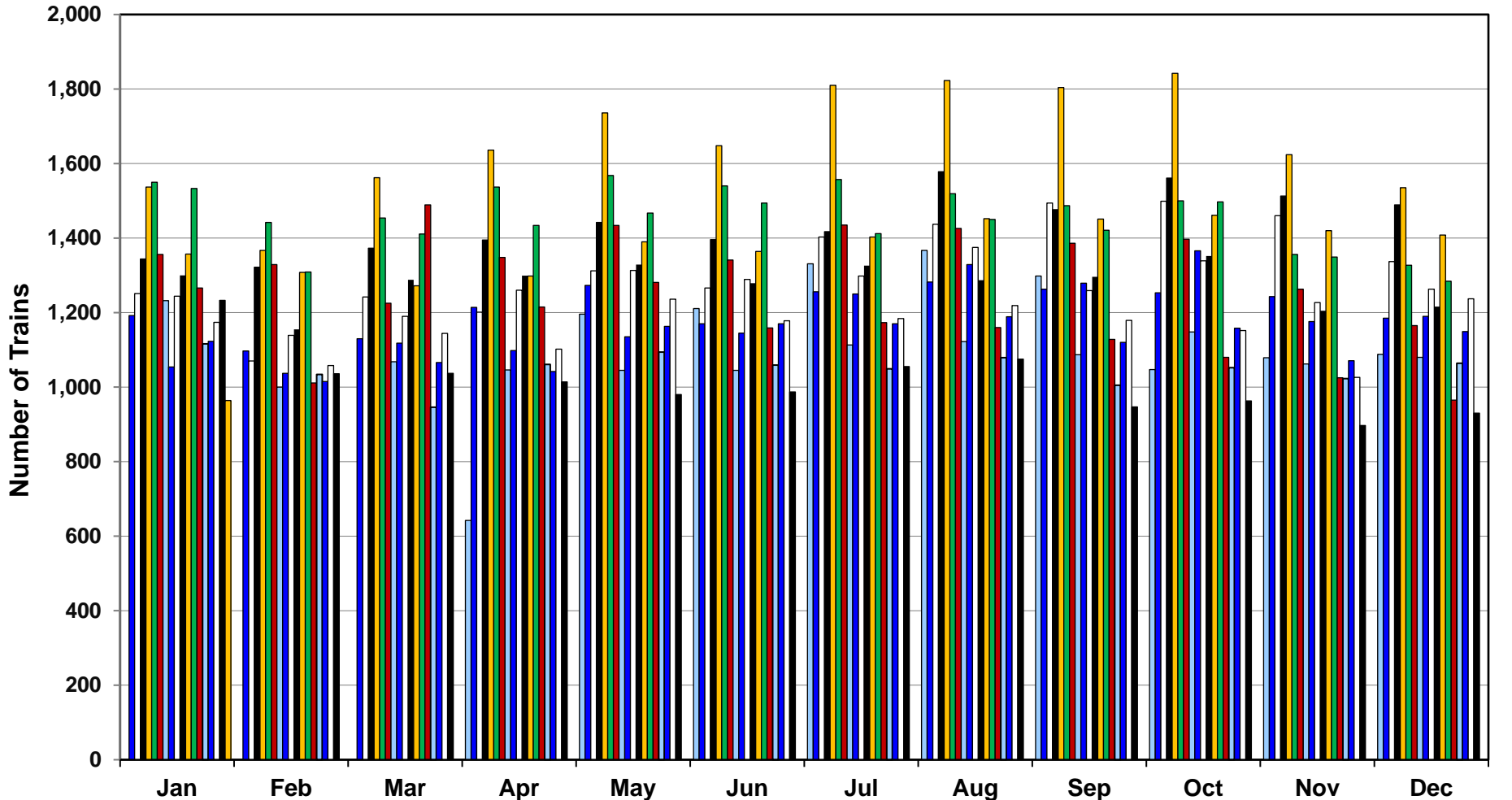
	'20	'19	Change
TEU's *	17,454 (317)	20,531 (372)	- 15.0 %
Calendar Year to Date	17,454 (317)	20,531 (372)	- 15.0 %
Fiscal Year to Date	137,266 (359)	151,439 (396)	- 9.4 %

Operations – Combined

	'19	'18	Change
TEU's *	412,770 (7,488)	465,757 (8,449)	- 11.4 %
Calendar Year to Date	412,770 (7,488)	465,757 (8,449)	- 11.4 %
Fiscal Year to Date	2,909,566 (7,610)	3,132,172 (8,192)	- 7.1 %

* Note: Numbers in () are the Average Daily Containers, Daily TEU's ÷ 1.78 = Containers.

Alameda Corridor Train Counts



Average Daily Trains*:

<u>2002</u>	<u>2003</u>	<u>2004</u>	<u>2005</u>	<u>2006</u>	<u>2007</u>	<u>2008</u>	<u>2009</u>	<u>2010</u>	<u>2011</u>
39	40	44	47	55	49	44	36	39	42
<u>2012</u>	<u>2013</u>	<u>2014</u>	<u>2015</u>	<u>2016</u>	<u>2017</u>	<u>2018</u>	<u>2019</u>	<u>2020</u>	
42	45	47	38	34	37	38	33	31	

2002	2003	2004	2005	2006	2007	2008
2009	2010	2011	2012	2013	2014	2015
2016	2017	2018	2019	2020		

* Corridor Capacity 150 Trains per Day

Use Fees & Container Charges

as of January 31, 2020

