

Performance Comparison

February '20 vs. '19



Performance Comparison

February '20 vs. '19, CY20 & FY20 Year to Date

Operations

	'20	'19	Change
Trains (Daily)	820 (28.3)	1,036 (37.0)	- 20.8 %
Calendar Year to Date	1,784 (29.7)	2,269 (38.5)	- 21.4 %
Fiscal Year to Date	7,651 (31.4)	9,266 (38.1)	- 17.4 %

Railroad Self-Assessment Revenue

	'20	'19	Change
Revenue	\$8.2 M	\$8.8 M	- 6.4 %
Calendar Year to Date	\$17.5 M	\$18.5 M	- 5.8 %
Fiscal Year to Date *	\$70.5 M	\$73.7 M	- 4.4 %

* Note: Does not include reconciliations / adjustments for fiscal year-end.

Performance Use Fees & Container Charges

February '20 vs. '19, CY20 & FY20 Year to Date

Operations – On Corridor (Use Fees)

	'20	'19	Change
TEU's *	345,351 (6,697)	397,024 (7,974)	- 13.0 %
Calendar Year to Date	740,667 (7,185)	842,250 (8,028)	- 12.1 %
Fiscal Year to Date	3,117,652 (6,942)	3,377,757 (7,817)	- 7.7 %

Operations – Around Corridor (Container Charges)

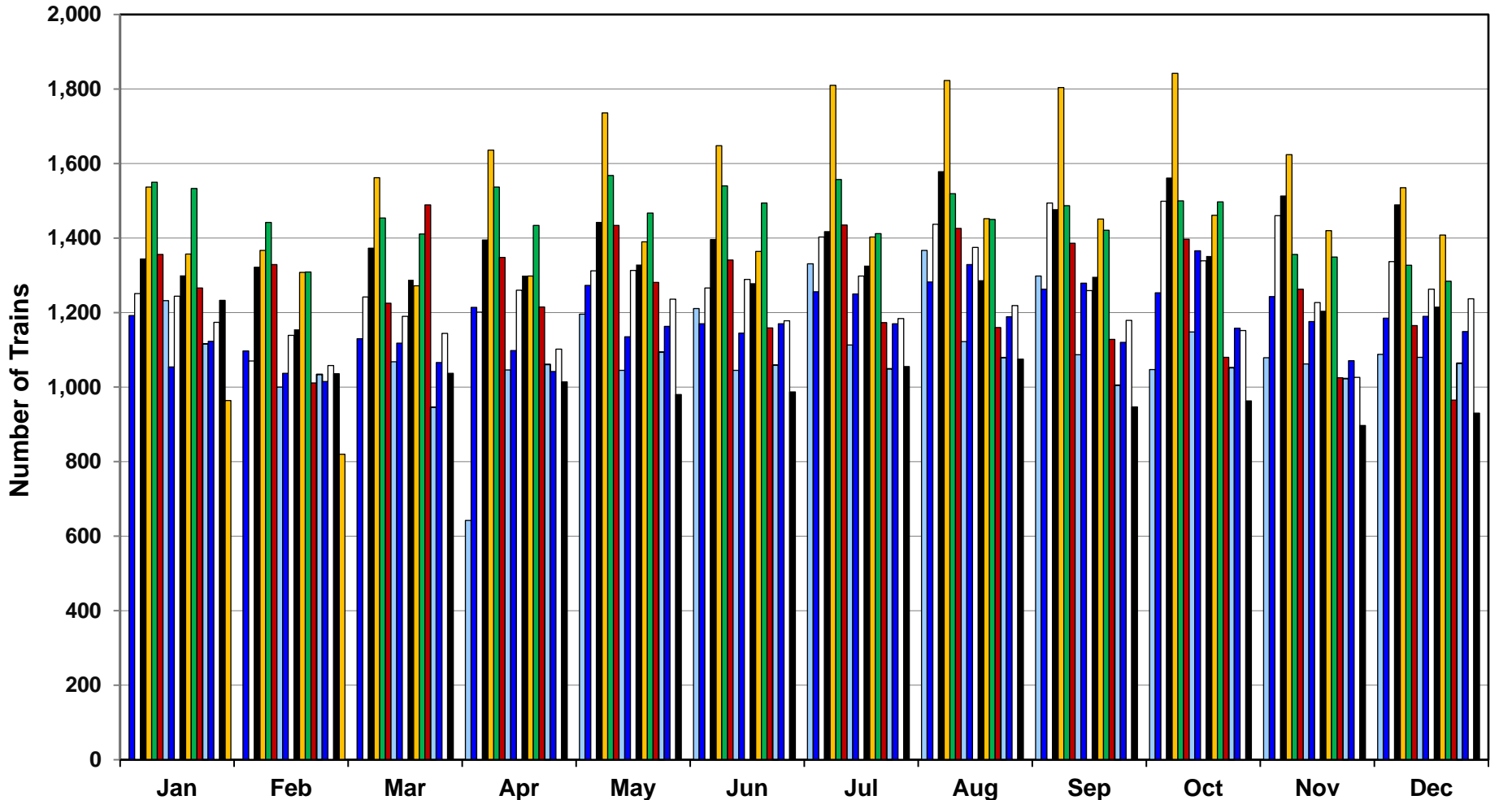
	'20	'19	Change
TEU's *	16,120 (313)	18,775 (377)	- 14.1 %
Calendar Year to Date	33,574 (315)	39,306 (375)	- 14.6 %
Fiscal Year to Date	153,385 (353)	170,214 (394)	- 9.9 %

Operations – Combined

	'19	'18	Change
TEU's *	361,471 (7,009)	415,799 (8,351)	- 13.1 %
Calendar Year to Date	774,241 (7,256)	881,556 (8,402)	- 12.2 %
Fiscal Year to Date	3,271,037 (7,539)	3,547,971 (8,210)	- 7.8 %

* Note: Numbers in () are the Average Daily Containers, Daily TEU's ÷ 1.78 = Containers.

Alameda Corridor Train Counts



Average Daily Trains*:

<u>2002</u>	<u>2003</u>	<u>2004</u>	<u>2005</u>	<u>2006</u>	<u>2007</u>	<u>2008</u>	<u>2009</u>	<u>2010</u>	<u>2011</u>
39	40	44	47	55	49	44	36	39	42
<u>2012</u>	<u>2013</u>	<u>2014</u>	<u>2015</u>	<u>2016</u>	<u>2017</u>	<u>2018</u>	<u>2019</u>	<u>2020</u>	
42	45	47	38	34	37	38	33	27	

2002	2003	2004	2005	2006	2007	2008
2009	2010	2011	2012	2013	2014	2015
2016	2017	2018	2019	2020		

* Corridor Capacity 150 Trains per Day

Use Fees & Container Charges

as of February 29, 2020

