

Performance Comparison

December '11 vs. '10



Performance Comparison

December '11 vs. '10, CY11 & FY12 Year to Date

Operations

	'11	'10	Change
Trains (Daily)	1,263 (40.7)	1,190 (38.4)	6.1 %
Calendar Year to Date	15,196 (41.6)	14,177 (38.8)	7.2 %
Fiscal Year to Date	7,761 (42.2)	7,590 (41.3)	2.3 %

Railroad Self-Assessment Revenue

	'11	'10	Change
Revenue	\$7.6 M	\$7.3 M	4.8 %
Calendar Year to Date	\$93.2 M	\$87.2 M	6.9 %
Fiscal Year to Date *	\$47.5 M	\$46.5 M	2.1 %

* Note: Does not include reconciliations / adjustments for fiscal year-end.

Performance Use Fees & Container Charges

December '11 vs. '10, CY11 & FY12 Year to Date

Operations – On Corridor (Use Fees)

	'11	'10	Change
TEU's *	345,093 (6,398)	339,082 (6,286)	1.8 %
Calendar Year to Date	4,324,788 (6,810)	4,005,772 (6,307)	8.0 %
Fiscal Year to Date	2,232,775 (6,974)	2,168,073 (6,772)	3.0 %

Operations – Around Corridor (Container Charges)

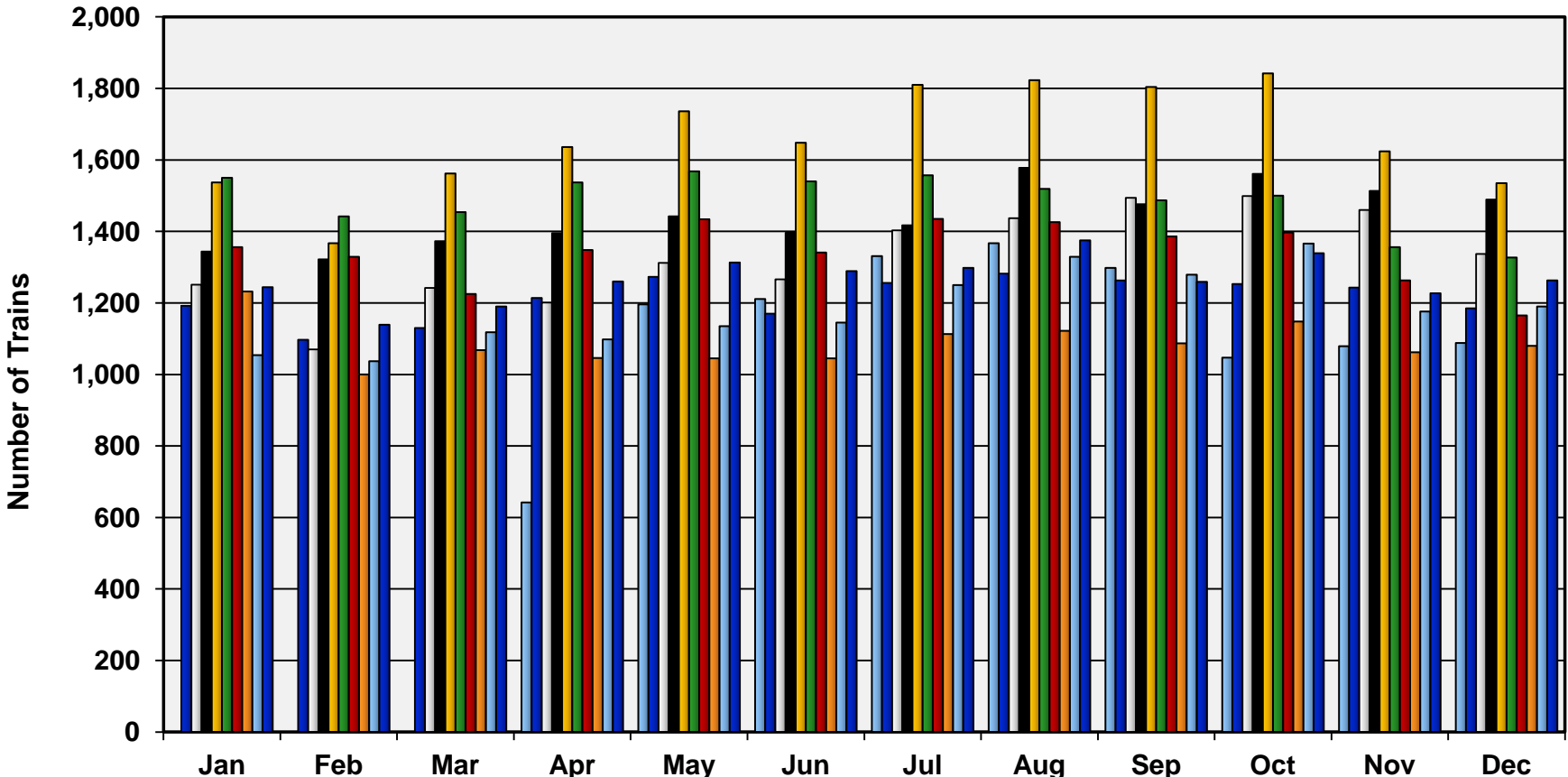
	'11	'10	Change
TEU's *	50,039 (928)	57,349 (1,063)	-12.7 %
Calendar Year to Date	662,332 (1,043)	788,763 (1,242)	-16.0 %
Fiscal Year to Date	323,292 (1,010)	425,681 (1,330)	-24.0 %

Operations – Combined

	'11	'10	Change
TEU's *	395,132 (7,325)	396,431 (7,349)	-0.3 %
Calendar Year to Date	4,987,120 (7,852)	4,794,535 (7,549)	4.0 %
Fiscal Year to Date	2,556,067 (7,984)	2,593,753 (8,101)	-1.4 %

* Note: Numbers in () are the Average Daily Containers, Daily TEU's ÷ 1.74 = Containers.

Alameda Corridor Train Counts



Average number of trips per day in

<u>2002</u>	<u>2003</u>	<u>2004</u>	<u>2005</u>	<u>2006</u>	<u>2007</u>	<u>2008</u>	<u>2009</u>	<u>2010</u>	<u>2011</u>	2002	2003	2004	2005	2006
39	40	44	47	55	49	44	36	39	42	2007	2008	2009	2010	2011

Use Fees & Container Charges

as of December 31, 2011

