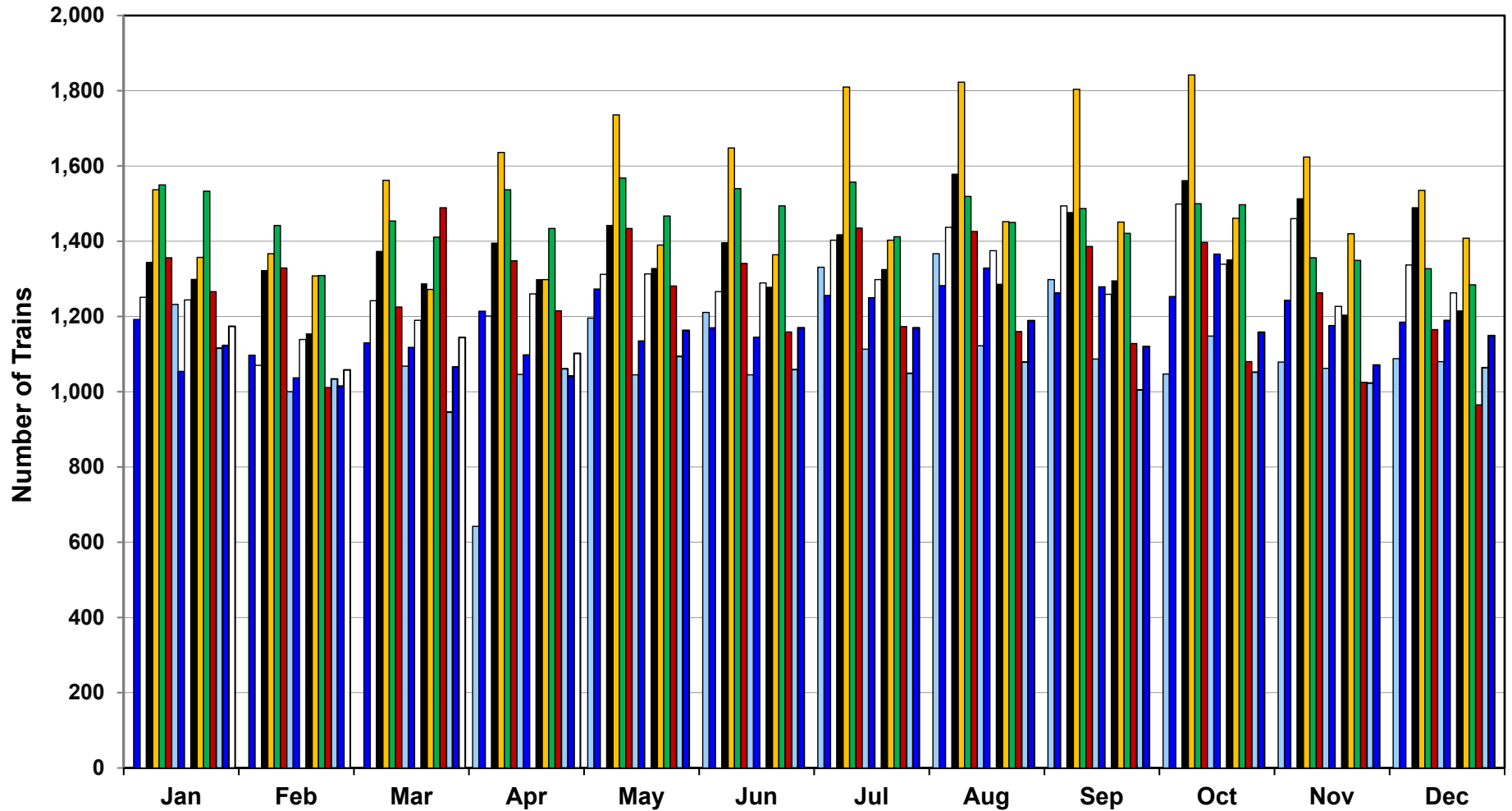


## Number of Trains Running on the Alameda Corridor

	2002	2003	2004	2005	2006	2007	2008	2009	2010	2011	2012	2013	2014	2015	2016	2017	2018	2018 Daily Avg. per Month *
Jan		1,192	1,251	1,344	1,537	1,550	1,356	1,232	1,054	1,244	1,300	1,357	1,533	1,266	1,116	1,123	1,174	37.9
Feb		1,097	1,070	1,322	1,367	1,442	1,329	1,000	1,037	1,139	1,155	1,308	1,309	1,011	1,034	1,015	1,058	37.8
Mar		1,130	1,242	1,373	1,562	1,454	1,225	1,068	1,118	1,190	1,288	1,272	1,411	1,489	946	1,066	1,144	36.9
Apr	642	1,214	1,201	1,395	1,636	1,537	1,348	1,046	1,098	1,260	1,299	1,298	1,434	1,215	1,061	1,042	1,102	36.7
May	1,196	1,273	1,312	1,442	1,736	1,568	1,434	1,045	1,135	1,313	1,329	1,390	1,467	1,281	1,094	1,163		
Jun	1,211	1,170	1,266	1,396	1,648	1,540	1,341	1,045	1,145	1,289	1,279	1,364	1,494	1,159	1,059	1,170		
Jul	1,331	1,256	1,403	1,417	1,810	1,557	1,435	1,113	1,250	1,298	1,326	1,403	1,412	1,173	1,049	1,170		
Aug	1,367	1,282	1,437	1,578	1,823	1,519	1,426	1,122	1,329	1,375	1,287	1,452	1,450	1,196	1,079	1,189		
Sep	1,298	1,263	1,494	1,476	1,804	1,487	1,386	1,087	1,279	1,259	1,296	1,451	1,421	1,128	1,005	1,120		
Oct	1,047	1,253	1,499	1,561	1,842	1,500	1,397	1,148	1,366	1,339	1,352	1,461	1,497	1,080	1,052	1,158		
Nov	1,079	1,243	1,460	1,513	1,624	1,356	1,263	1,062	1,176	1,227	1,205	1,420	1,349	1,025	1,023	1,071		
Dec	1,088	1,185	1,337	1,489	1,535	1,327	1,165	1,080	1,190	1,263	1,216	1,408	1,284	965	1,064	1,149		
Total	10,259	14,558	15,972	17,306	19,924	17,837	16,105	13,048	14,177	15,196	15,332	16,584	17,061	13,988	12,582	13,436	4,478	
Avg. # per day	39	40	44	47	55	49	44	36	39	42	42	45	47	38	34	37	37	
<b>Number of Trains to Date</b>																	<b>247,843</b>	

\* Corridor Capacity 150 Trains per Day

# Alameda Corridor Train Counts



## Average Daily Trains\*:

<u>2002</u>	<u>2003</u>	<u>2004</u>	<u>2005</u>	<u>2006</u>	<u>2007</u>	<u>2008</u>	<u>2009</u>	<u>2010</u>
39	40	44	47	55	49	44	36	39
<u>2011</u>	<u>2012</u>	<u>2013</u>	<u>2014</u>	<u>2015</u>	<u>2016</u>	<u>2017</u>	<u>2018</u>	
42	42	45	47	38	34	37	37	

2002	2003	2004	2005	2006	2007
2008	2009	2010	2011	2012	2013
2014	2015	2016	2017	2018	

\* Corridor Capacity 150 Trains per Day