

Performance Comparison

October '08 vs. '07



Performance Comparison

October '08 vs. '07, CY08 & FY09 Year to Date

Operations

	'08	'07	Change
Trains (Daily)	1,397 (45.1)	1,500 (48.4)	- 6.9 %
Calendar Year to Date	13,677 (44.8)	15,154 (49.8)	- 9.7 %
Fiscal Year to Date	5,644 (45.9)	6,063 (49.3)	- 6.9%

Railroad Self-Assessment Revenue

	'08	'07	Change
Revenue	\$8.0 M	\$8.4 M	- 5.4 %
Calendar Year to Date	\$78.3 M	\$81.1 M	- 3.4 %
Fiscal Year to Date	\$32.6 M	\$33.3 M	- 2.1 %

Performance Use Fees & Container Charges

October '08 vs. '07, CY08 & FY09 Year to Date

Operations – On Corridor (Use Fees)

	'08	'07	Change
TEU's *	407,436 (7,302)	417,736 (7,486)	- 2.5 %
Calendar Year to Date	3,684,153 (6,711)	4,011,043 (7,330)	- 8.2 %
Fiscal Year to Date	1,580,358 (7,138)	1,649,493 (7,450)	- 4.2 %

Operations – Around Corridor (Container Charges)

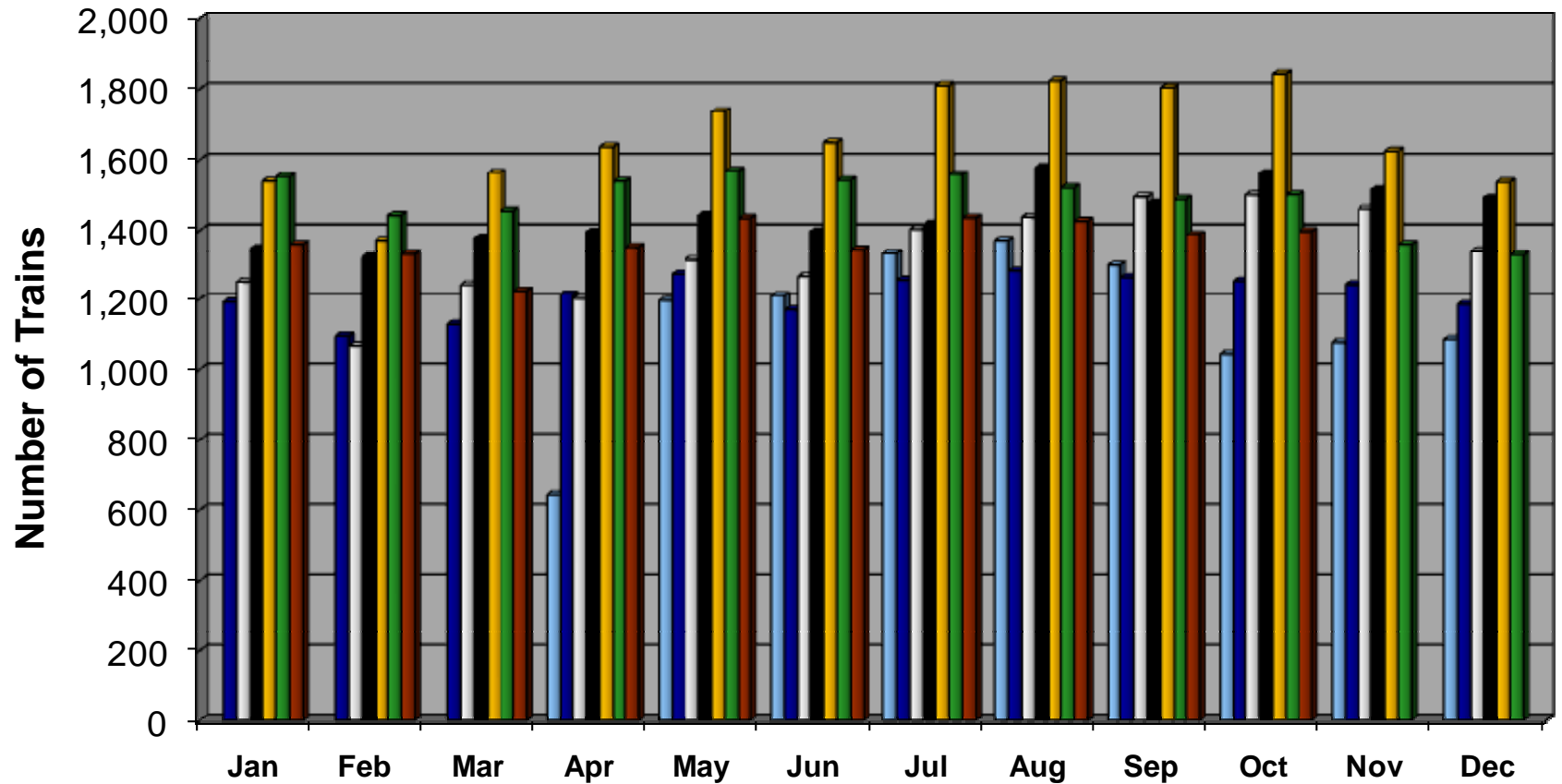
	'08	'07	Change
TEU's *	84,466 (1,514)	107,369 (1,924)	- 21.3 %
Calendar Year to Date	898,692 (1,637)	1,030,060 (1,882)	- 12.8 %
Fiscal Year to Date	365,021 (1,649)	421,185 (1,902)	- 13.3 %

Operations – Combined

	'08	'07	Change
TEU's *	491,901 (8,815)	525,105 (9,410)	- 6.3 %
Calendar Year to Date	4,582,845 (8,348)	5,041,103 (9,213)	- 9.1 %
Fiscal Year to Date	1,945,379 (8,787)	2,070,678 (9,353)	-6.1 %

* Note: Numbers in () are the Average Daily Containers, Daily TEU's ÷ 1.8 = Containers.

Alameda Corridor Train Counts



Average number of trips per day in							2002	2003	2004	2005
<u>2002</u>	<u>2003</u>	<u>2004</u>	<u>2005</u>	<u>2006</u>	<u>2007</u>	<u>2008</u>	2006	2007	2008	
39	40	44	47	55	49	45				

Use Fees & Container Charges

as of October 30, 2008

