

Performance Comparison

October '07 vs. '06



Performance Comparison

October '07 vs. '06, CY07 & FY08 Year to Date

Operations

	'07	'06	Change
Trains (Daily)	1,500 (48.4)	1,842 (59.4)	- 18.6 %
Calendar Year to Date	15,141 (49.8)	16,765 (55.1)	- 9.7 %
Fiscal Year to Date	6,050 (49.2)	7,279 (59.2)	- 16.9 %

Railroad Self-Assessment Revenue

	'07	'06	Change
Revenue	\$8.4 M	\$8.4 M	+ 0.1 %
Calendar Year to Date	\$81.1 M	\$74.7 M	+ 8.5 %
Fiscal Year to Date	\$33.3 M	\$32.3 M	+ 2.9 %

Performance Use Fees & Container Charges

October '07 vs. '06, CY07 & FY08 Year to Date

Operations – On Corridor (Use Fees)

	'07	'06	Change
TEU's ⁽¹⁾	417,736 (7,486)	485,993 (8,710)	- 14.0 %
Calendar Year to Date	4,011,043 (7,330)	4,117,721 (7,525)	- 2.6 %
Fiscal Year to Date	1,649,493 (7,450)	1,848,579 (8,349)	- 10.8 %

Operations – Around Corridor (Container Charges)

	'07	'06	Change
TEU's ^{(1) (2)}	107,369 (1,924)	102,666 (1,840)	+ 4.6 %
Calendar Year to Date	1,030,060 (1,882)	1,052,137 (1,923)	- 2.1 %
Fiscal Year to Date	421,185 (1,902)	410,469 (1,854)	+ 2.6 %

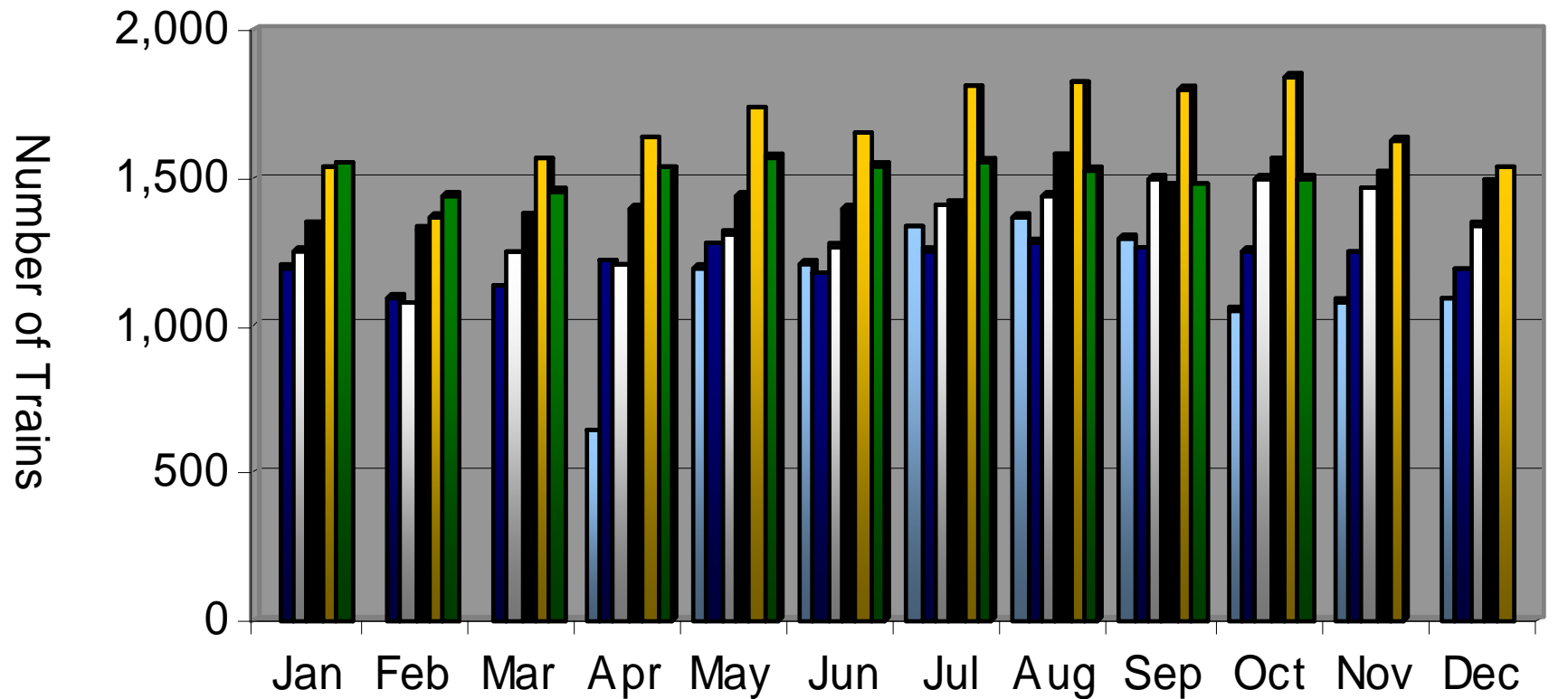
Operations – Combined

	'07	'06	Change
TEU's ⁽¹⁾	525,105 (9,410)	588,659 (10,549)	- 10.8 %
Calendar Year to Date	5,041,103 (9,213)	5,169,858 (9,448)	- 2.5 %
Fiscal Year to Date	2,070,678 (9,353)	2,259,048 (10,203)	- 8.3 %

(1) Note: Numbers in () are the Average Daily Containers, Daily TEU's ÷ 1.8 = Containers.

(2) CY & FY around corridor volumes, as previously reported in January – March 2006, have been modified to exclude volumes moved by rail around trench. Volumes as now reported include trucking around corridor only.

Alameda Corridor Train Counts



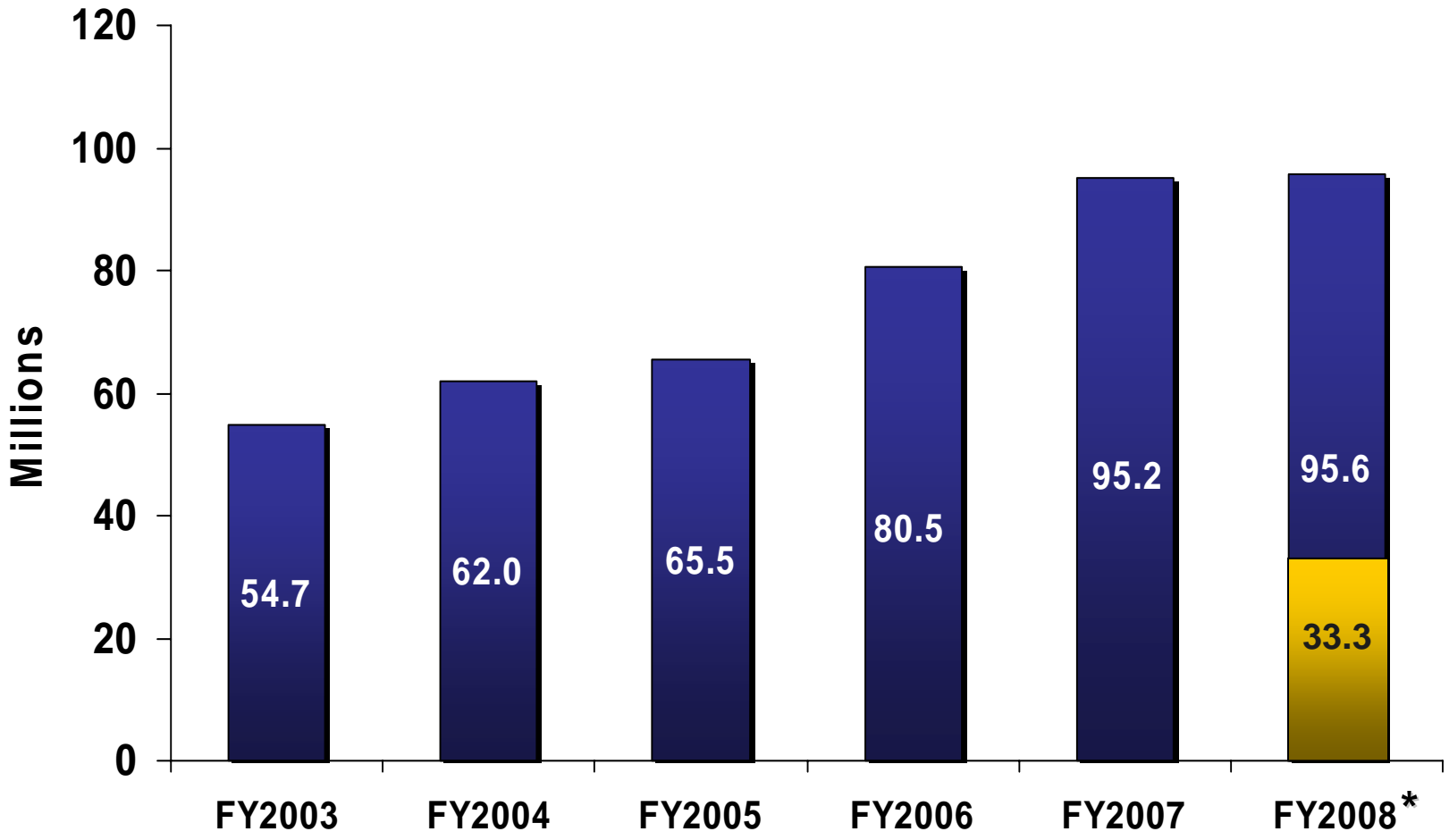
Average number of trips per day in

<u>2002</u>	<u>2003</u>	<u>2004</u>	<u>2005</u>	<u>2006</u>	<u>2007</u>
39	40	44	47	55	50



Use Fees & Container Charges

as of October 31, 2007



* Use Fees & Container Charges for FY2008 are estimated.