

# *Performance Comparison*

*January '07 vs. '06*



# Performance Comparison

January '07 vs. '06, CY07 & FY07 Year to Date

## *Operations*

	'07	'06	Change
<b>Trains (Daily)</b>	<b>1,550 (50.0)</b>	<b>1,537 (49.6)</b>	<b>+ 0.8 %</b>
<b>Calendar Year to Date</b>	<b>1,550 (50.0)</b>	<b>1,537 (49.6)</b>	<b>+ 0.8 %</b>
<b>Fiscal Year to Date</b>	<b>11,988 (55.8)</b>	<b>10,571 (49.2)</b>	<b>+ 13.4%</b>

## *Railroad Self-Assessment Revenue*

	'07	'06	Change
<b>Revenue</b>	<b>\$8.3 M</b>	<b>\$6.8 M</b>	<b>+ 21.2 %</b>
<b>Calendar Year to Date</b>	<b>\$8.3 M</b>	<b>\$6.8 M</b>	<b>+ 21.2 %</b>
<b>Fiscal Year to Date</b>	<b>\$55.7 M</b>	<b>\$43.7 M</b>	<b>+ 27.5 %</b>

# Performance Use Fees & Container Charges January '07 vs. '06, CY07 & FY07 Year to Date

## *Operations – On Corridor (Use Fees)*

	'07	'06	Change
<b>TEU's <sup>(1)</sup></b>	<b>417,239 (7,477)</b>	<b>382,793 (6,860)</b>	<b>+ 9.0 %</b>
<b>Calendar Year to Date</b>	<b>417,239 (7,477)</b>	<b>382,793 (6,860)</b>	<b>+ 9.0 %</b>
<b>Fiscal Year to Date</b>	<b>3,093,137 (7,993)</b>	<b>2,366,974 (6,116)</b>	<b>+ 30.7 %</b>

## *Operations – Around Corridor (Container Charges)*

	'07	'06	Change
<b>TEU's <sup>(1) (2)</sup></b>	<b>104,489 (1,873)</b>	<b>98,116 (1,758)</b>	<b>+ 6.5 %</b>
<b>Calendar Year to Date</b>	<b>104,489 (1,873)</b>	<b>98,116 (1,758)</b>	<b>+ 6.5 %</b>
<b>Fiscal Year to Date</b>	<b>701,446 (1,813)</b>	<b>725,755 (1,875)</b>	<b>- 3.4 %</b>

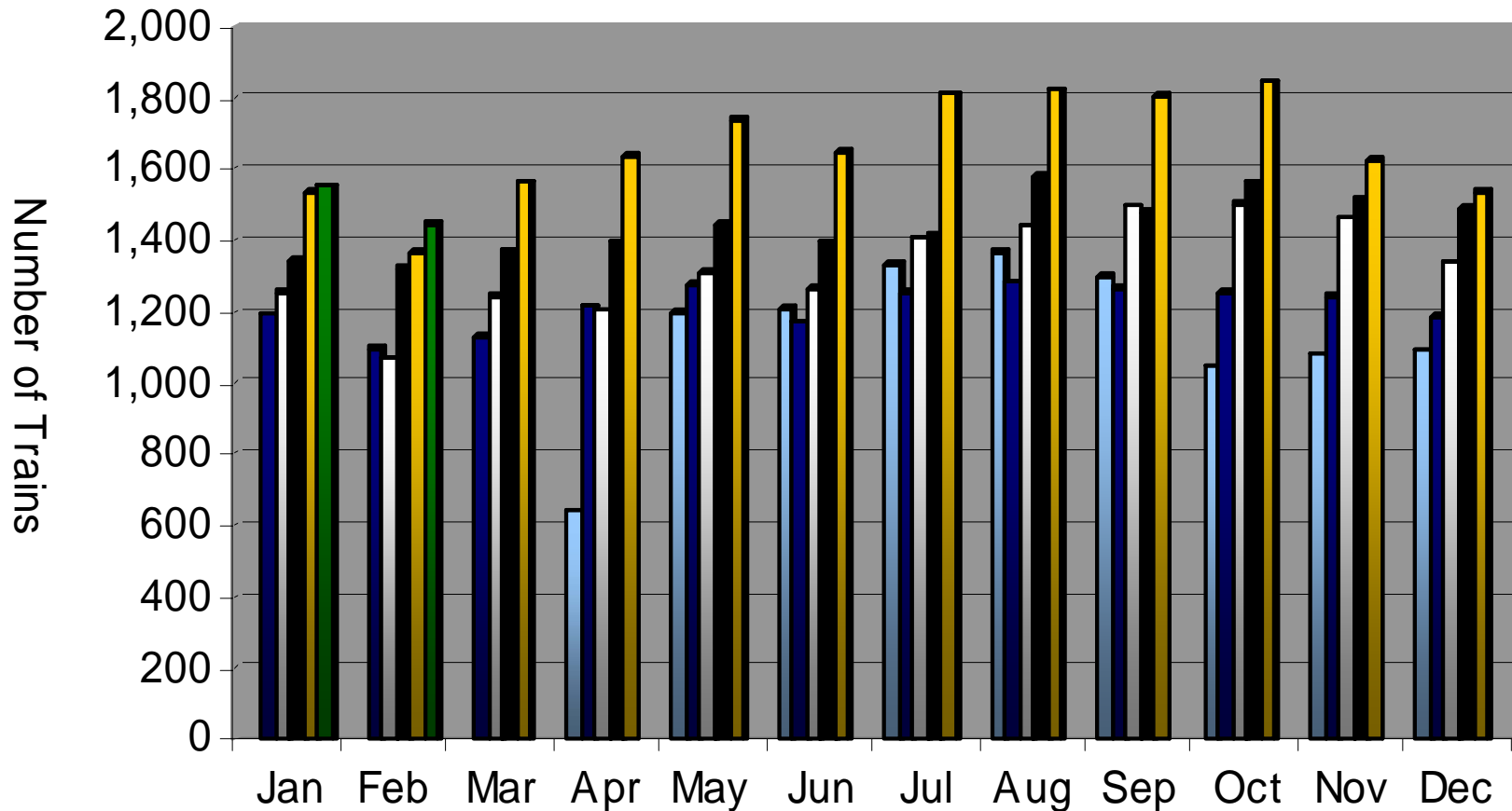
## *Operations – Combined*

	'07	'06	Change
<b>TEU's <sup>(1)</sup></b>	<b>521,728 (9,350)</b>	<b>480,909 (8,618)</b>	<b>+ 8.5 %</b>
<b>Calendar Year to Date</b>	<b>521,728 (9,350)</b>	<b>480,909 (8,618)</b>	<b>+ 8.5 %</b>
<b>Fiscal Year to Date</b>	<b>3,794,583 (9,805)</b>	<b>3,092,729 (7,992)</b>	<b>+ 22.7 %</b>

(1) Note: Numbers in ( ) are the Average Daily Containers, Daily TEU's ÷ 1.8 = Containers.

(2) CY & FY around corridor volumes, as previously reported in January – March 2006, have been modified to exclude volumes moved by rail around trench. Volumes as now reported include trucking around corridor only.

# Alameda Corridor Train Counts



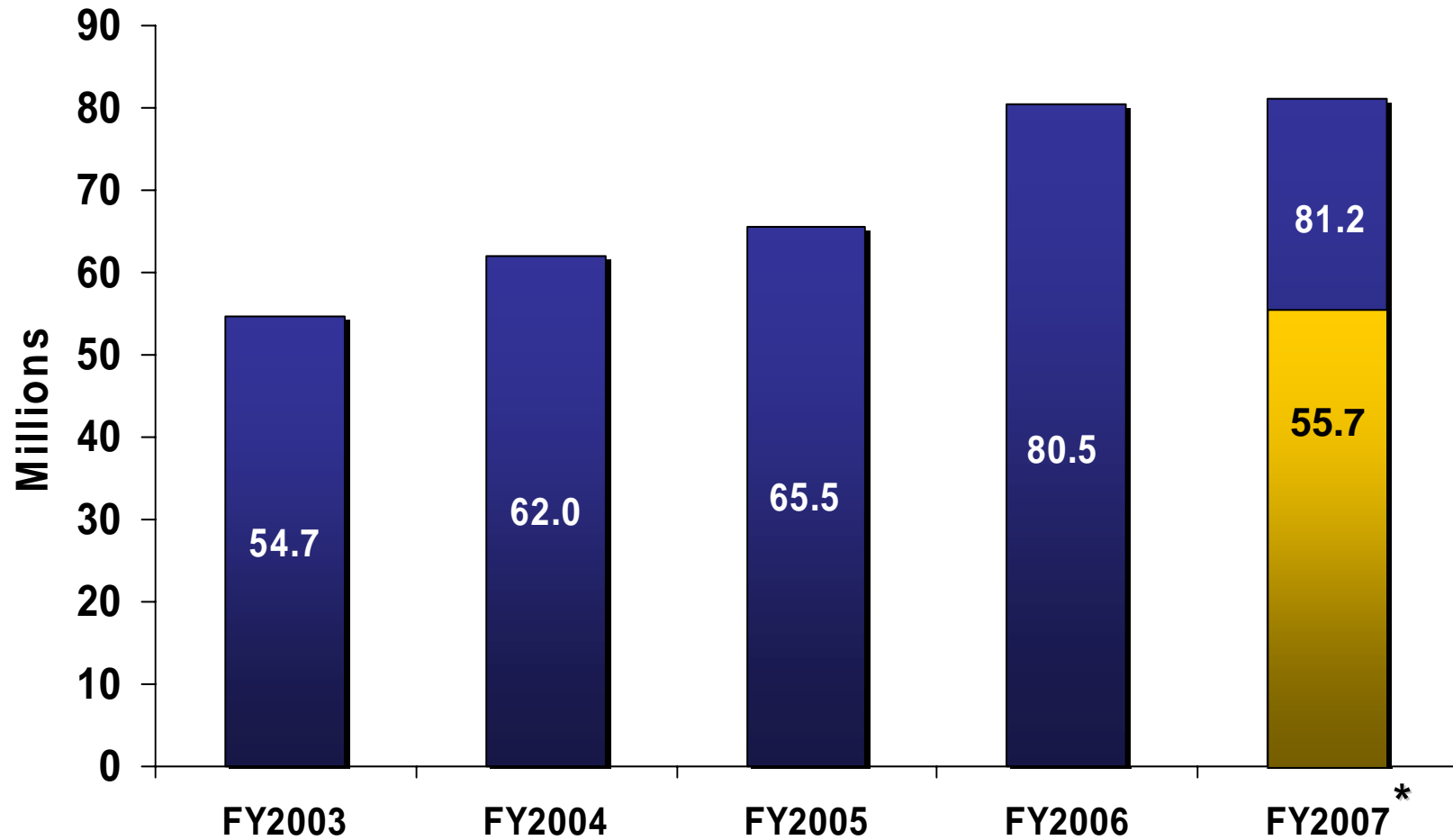
Average number of trips per day in

<u>2002</u>	<u>2003</u>	<u>2004</u>	<u>2005</u>	<u>2006</u>	<u>2007</u>
39	40	44	47	55	51

■ 2002 
 ■ 2003 
 ■ 2004 
 ■ 2005 
 ■ 2006 
 ■ 2007

# Use Fees & Container Charges

as of January 31, 2007



\* Use Fees & Container Charges for FY2007 are estimated.