

# ***Performance Comparison***

***April '08 vs. '07***



# Performance Comparison

## *April '08 vs. '07, CY08 & FY08 Year to Date*

### *Operations*

	'08	'07	Change
<b>Trains (Daily)</b>	<b>1,348 (44.9)</b>	<b>1,537 (51.2)</b>	<b>- 12.3 %</b>
<b>Calendar Year to Date</b>	<b>5,258 (43.5)</b>	<b>5,983 (49.9)</b>	<b>- 12.1 %</b>
<b>Fiscal Year to Date</b>	<b>14,004 (45.9)</b>	<b>16,421 (54.0)</b>	<b>- 14.7 %</b>

### *Railroad Self-Assessment Revenue*

	'08	'07	Change
<b>Revenue</b>	<b>\$7.5 M</b>	<b>\$7.7 M</b>	<b>- 2.5 %</b>
<b>Calendar Year to Date</b>	<b>\$30.1 M</b>	<b>\$31.0 M</b>	<b>- 2.9 %</b>
<b>Fiscal Year to Date</b>	<b>\$78.5 M</b>	<b>\$78.5</b>	<b>+ 0.0 %</b>

# Performance Use Fees & Container Charges

## April '08 vs. '07, CY08 & FY08 Year to Date

### Operations – On Corridor (Use Fees)

	'08	'07	Change
<b>TEU's *</b>	<b>337,755 (6,255)</b>	<b>368,073 (6,816)</b>	<b>- 8.2 %</b>
Calendar Year to Date	1,371,958 (6,299)	1,538,059 (7,121)	- 10.8 %
Fiscal Year to Date	3,749,622 (6,830)	4,213,958 (7,701)	- 11.0 %

### Operations – Around Corridor (Container Charges)

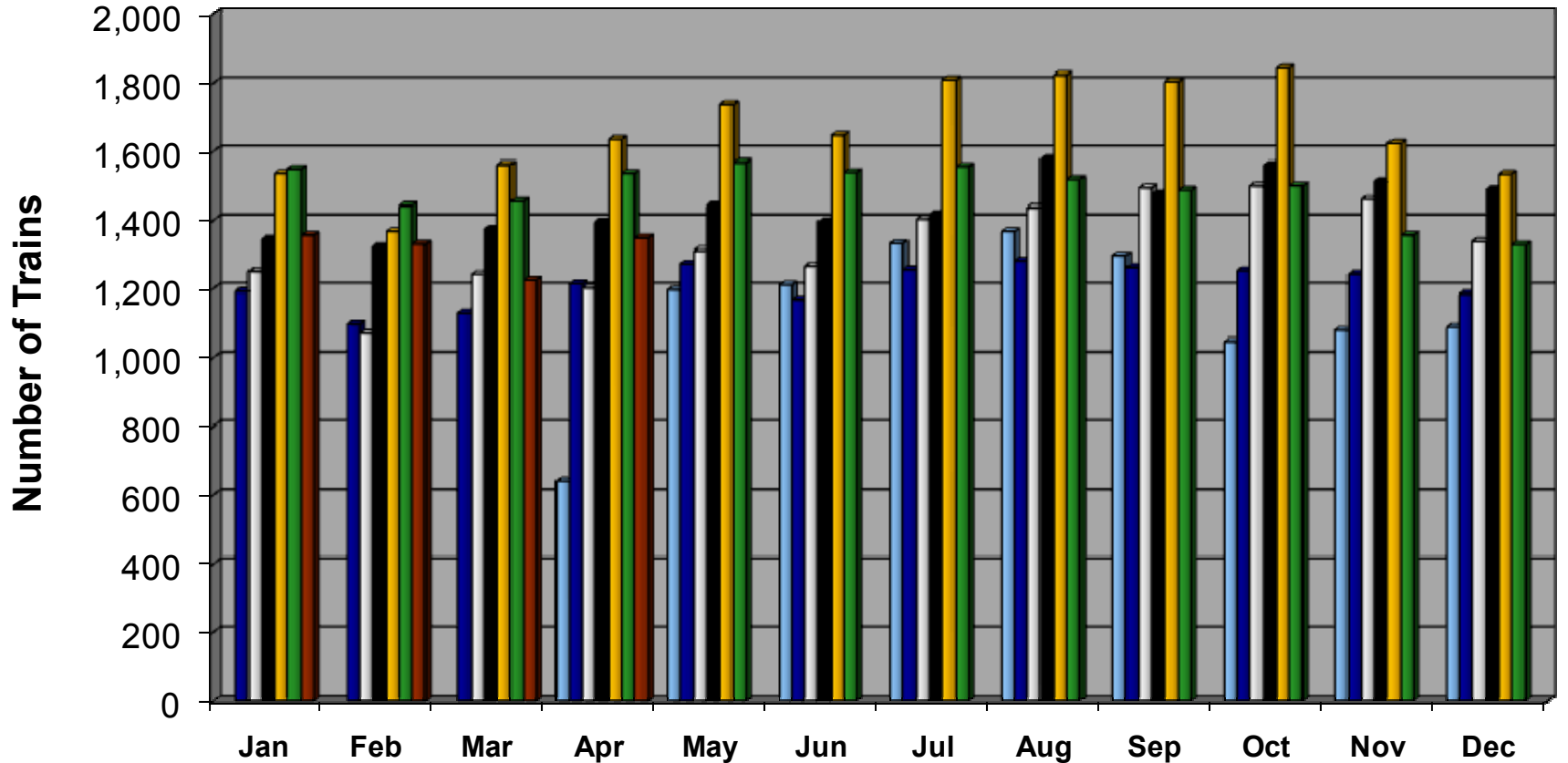
	'08	'07	Change
<b>TEU's *</b>	<b>90,824 (1,682)</b>	<b>98,731 (1,828)</b>	<b>- 8.0 %</b>
Calendar Year to Date	354,876 (1,629)	397,105 (1,838)	- 10.6 %
Fiscal Year to Date	962,057 (1,752)	994,062 (1,817)	- 3.2 %

### Operations – Combined

	'08	'07	Change
<b>TEU's *</b>	<b>428,579 (7,937)</b>	<b>466,804 (8,645)</b>	<b>- 8.2 %</b>
Calendar Year to Date	1,726,833 (7,929)	1,935,164 (8,959)	- 10.8 %
Fiscal Year to Date	4,711,679 (8,582)	5,208,020 (9,518)	- 9.5 %

\* Note: Numbers in ( ) are the Average Daily Containers, Daily TEU's ÷ 1.8 = Containers.

# Alameda Corridor Train Counts



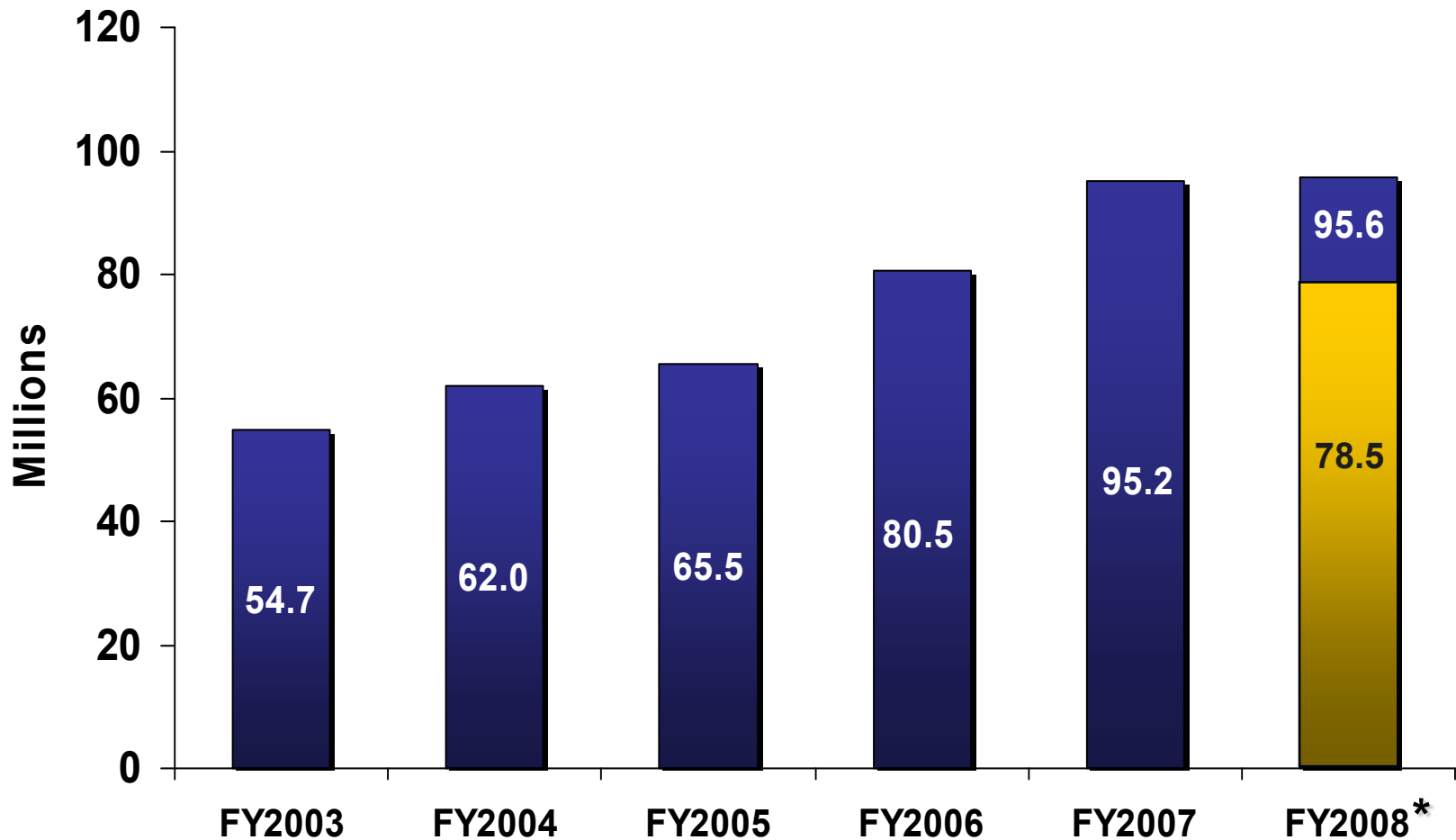
Average number of trips per day in

<u>2002</u>	<u>2003</u>	<u>2004</u>	<u>2005</u>	<u>2006</u>	<u>2007</u>	<u>2008</u>
39	40	44	47	55	49	43

2002	2003	2004	2005
2006	2007	2008	

# Use Fees & Container Charges

## as of April 30, 2008



\* Use Fees & Container Charges for FY2008 are estimated.