

Performance Comparison

April '07 vs. '06



Performance Comparison

April '07 vs. '06, CY07 & FY07 Year to Date

Operations

	'07	'06	Change
Trains (Daily)	1,537 (51.2)	1,636 (54.5)	- 6.1%
Calendar Year to Date	5,983 (49.9)	6,102 (50.9)	- 2.0%
Fiscal Year to Date	16,421 (54.0)	15,136 (49.8)	+ 8.5%

Railroad Self-Assessment Revenue

	'07	'06	Change
Revenue	\$7.7 M	\$7.4 M	+ 3.5 %
Calendar Year to Date	\$31.0 M	\$27.1 M	+ 14.4 %
Fiscal Year to Date	\$78.5 M	\$64.0 M	+ 22.7 %

Performance Use Fees & Container Charges

April '07 vs. '06, CY07 & FY07 Year to Date

Operations – On Corridor (Use Fees)

	'07	'06	Change
TEU's (1)	368,073 (6,816)	379,695 (7,031)	- 3.0 %
Calendar Year to Date	1,538,059 (7,121)	1,432,650 (6,633)	+ 7.4 %
Fiscal Year to Date	4,213,958 (7,701)	3,416,831 (6,244)	+ 23.3 %

Operations – Around Corridor (Container Charges)

	'07	'06	Change
TEU's (1) (2)	98,731 (1,828)	118,594 (2,196)	- 16.7 %
Calendar Year to Date	397,105 (1,838)	420,078 (1,945)	- 5.5 %
Fiscal Year to Date	994,062 (1,817)	1,047,717 (1,915)	- 5.1 %

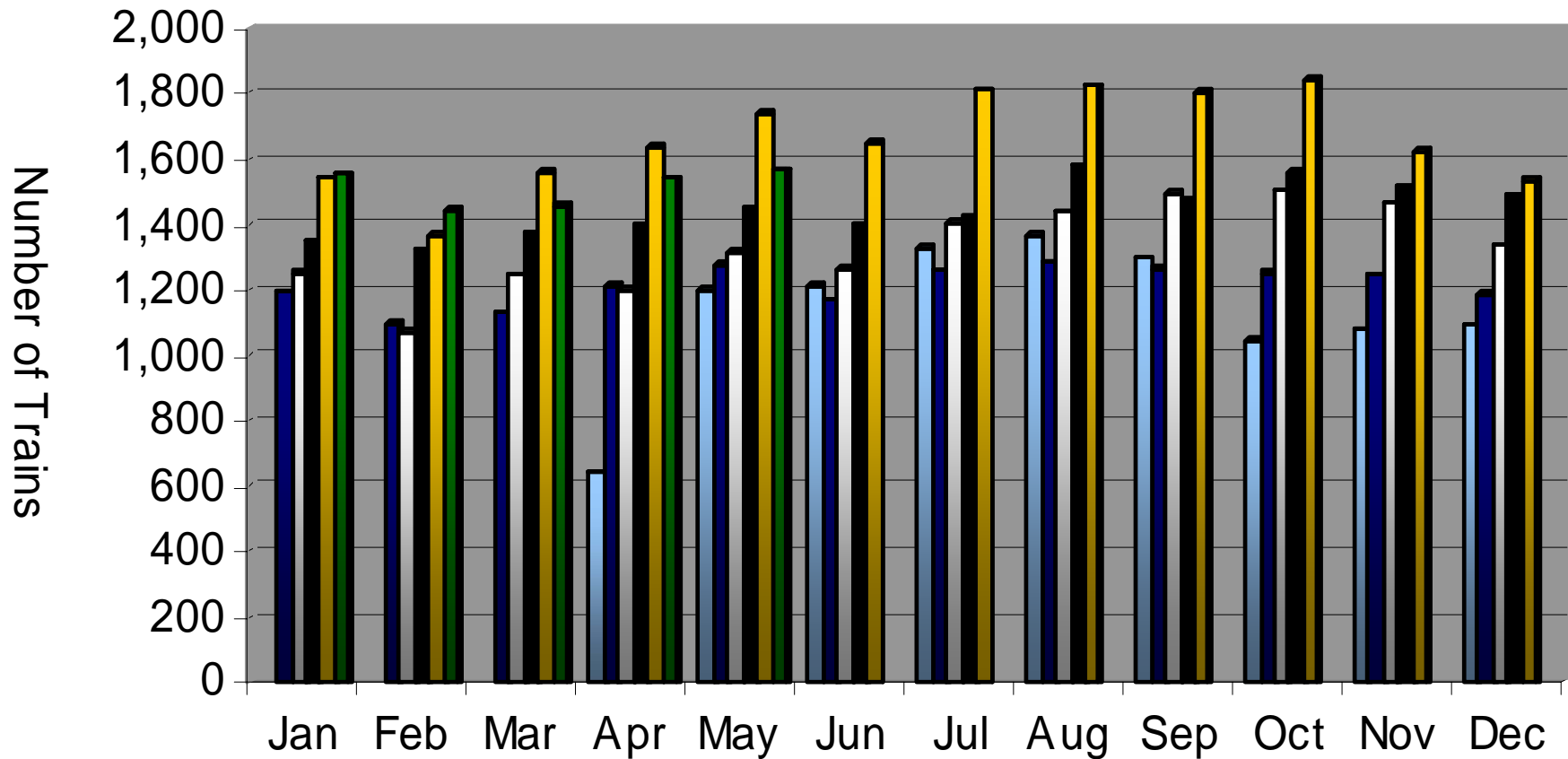
Operations – Combined

	'07	'06	Change
TEU's (1)	466,804 (8,645)	498,289 (9,228)	- 6.3 %
Calendar Year to Date	1,935,164 (8,959)	1,852,728 (8,577)	+ 4.4 %
Fiscal Year to Date	5,208,020 (9,518)	4,464,548 (8,159)	+ 16.6 %

(1) Note: Numbers in () are the Average Daily Containers, Daily TEU's ÷ 1.8 = Containers.

(2) CY & FY around corridor volumes, as previously reported in January – March 2006, have been modified to exclude volumes moved by rail around trench. Volumes as now reported include trucking around corridor only.

Alameda Corridor Train Counts



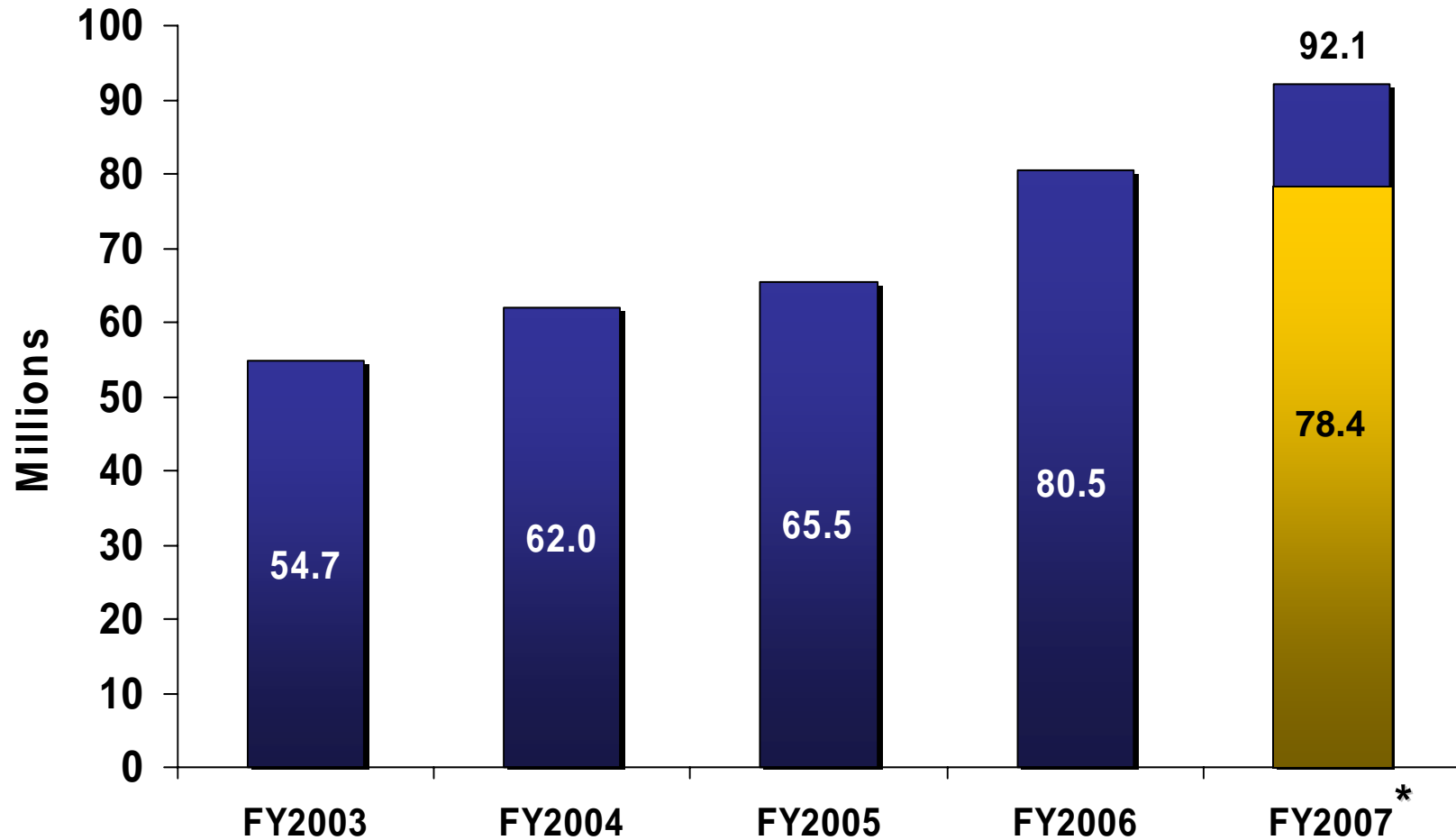
Average number of trips per day in

<u>2002</u>	<u>2003</u>	<u>2004</u>	<u>2005</u>	<u>2006</u>	<u>2007</u>
39	40	44	47	55	50

2002	2003	2004
2005	2006	2007

Use Fees & Container Charges

as of April 30, 2007



* Use Fees & Container Charges for FY2007 are estimated.